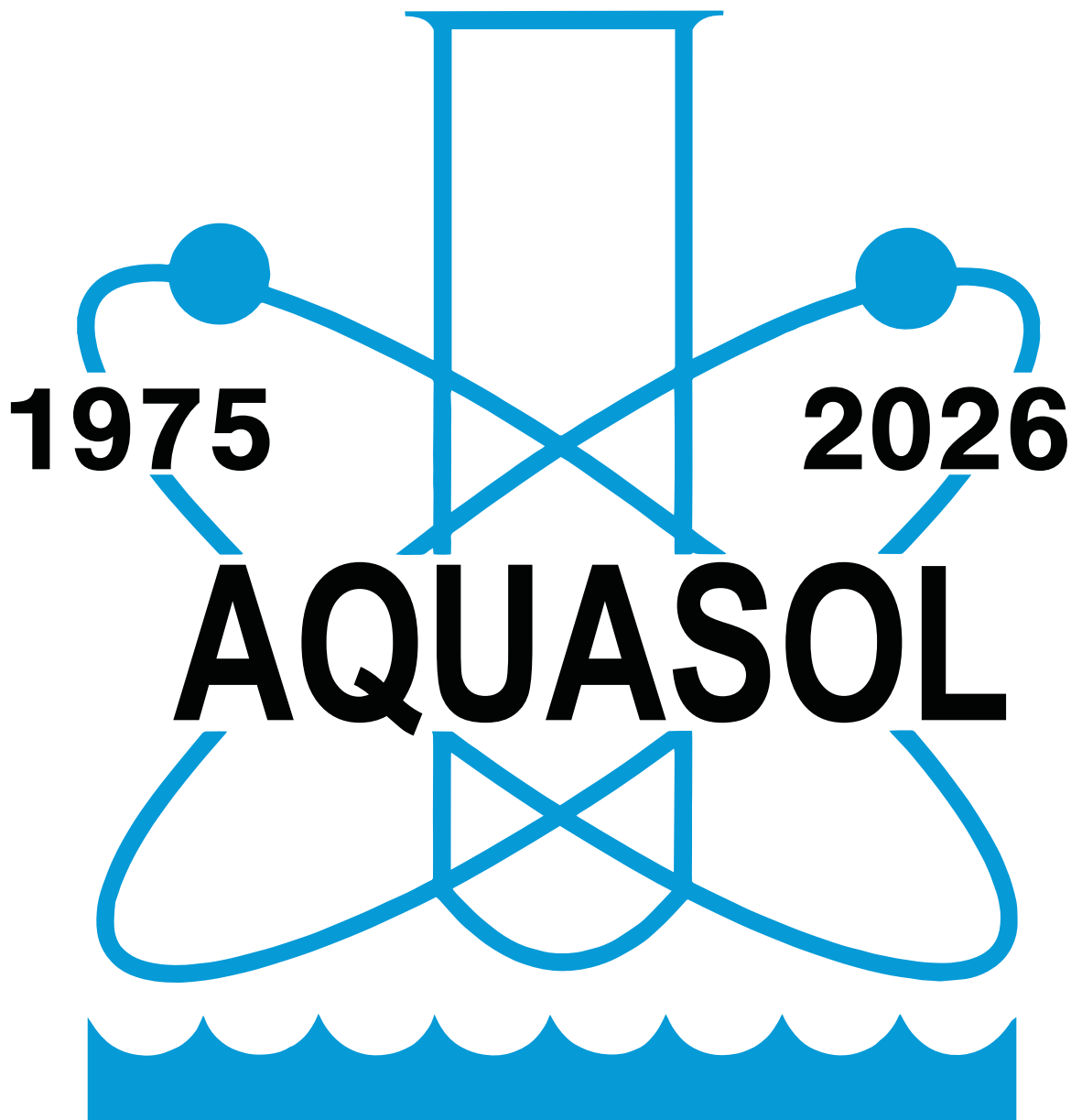


# THE AQUASOL COMPANIES

## 2026 Price Guide



**51 YEARS OF RELIABILITY & SERVICE**

**[www.aquasol.com](http://www.aquasol.com)**

**We Simply Control Pools. Since 1975.**

**1-800-444-0675**

## 50+ YEARS OF AQUASOL CONTROLLERS!

Dear Valued Customer,

Aquasol Controllers is the industry leader in chemical automation equipment for pools and spas. We are proud to have developed a truly wireless alert system that connects your chemical controller to your mobile device, allowing for real-time alerts to be sent directly to pool operators and other stakeholders.

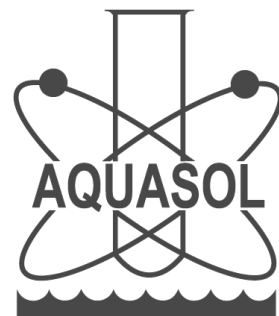
As we head into a new year, we aim to continue developing solutions like this to keep pushing the limits of chemical automation. Thank you for trusting us to provide the highest quality of chemical automation and pool equipment.

With gratitude,  
The Aquasol Team

### CONTACT US

P: 800-444-0675  
F: 713-683-6490  
E: SALES@AQUASOL.COM

MONDAY - FRIDAY  
8:00 AM - 5:00 PM



## Product Discount Categories for Aquasol Dealers

Products listed within this price guide fall into one of three categories. Each category has a different maximum dealer discount from the listed price. Please contact us with any questions

### Your Aquasol Dealer Discount

CATEGORY 1	CATEGORY 2	CATEGORY 3

Product	Category	Pages
System Packages	1	2
The AUI	N/A	3
Controllers	1	4
Controller Parts	3	4
Preventative Maintenance Service	N/A	4
Electrode Components		
Electrodes	2	5
Electrode Fitting	3	5
Cable Extensions	3	5
Erosion Feeders		
Stand-alone Feeder	3	5
Feeder Parts	3	5
Tubing, All	3	5
Flow Cell		
Flow Cell Complete	2	5
Flow Cell Parts, All	3	5
Safety Pressure Switch	2	5
Fittings, All	3	6
Solenoid Valves, Complete & Parts	3	7
Miscellaneous:		
Valves, Flow Meter, In-Line Filters	3	7
Mounting Panel	3	7
Chemical Feed Pumps	2	8-10
Pump Parts / Accessories	3	10-13
Miscellaneous Stenner Parts	3	14
Chemical Tanks, All	3	14-15
Field Service Equipment	3	15
STS Tank Series	2	15
Misc Field Service Equipment	N/A	15

## Featuring the XPC Controller - Now with WiFi / Ethernet Communications!



- ORP/pH control
- Integrated pressure switch
- Optional flow switch
- True proportional feeding with pulse input pumps
- Tank level monitoring
- TO rate calculation/display
- Flow totalizer
- IP65/NEMA 4X enclosure
- Online access for data monitoring
- Cloud data backup
- WiFi/Ethernet alerts

## Aqasol System Packages



Liquid System Package

Aqasol System Packages are our all-inclusive solution to chemical automation. Each board will include a chemical controller, electrodes, flow cell, pumps, and all other relevant components. The comprehensive lists for the solid and liquid systems are below.

Each system can be used with any controller. The controller pictured is only an example.

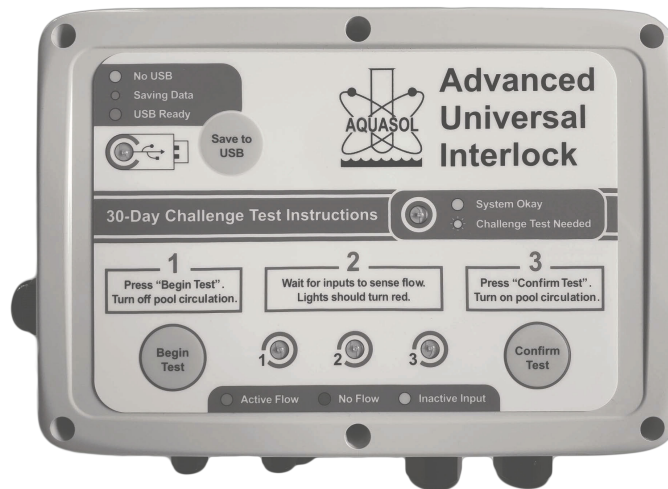


Solid System Package

<b>Liquid System Package</b>	<b>Part #</b>	<b>List Price</b>
-Controller:		
-XPC	SYSTEM-LX	\$4,700.00
-XPC with communications	SYSTEM-LXWIFI	\$5,700.00
-WTC	SYSTEM-LW	\$3,800.00
-SPC	SYSTEM-LS	\$3,400.00
- Electrodes	—included—	
- Flow cell	—included—	
-Chlorine feed pump (A85MP or A45MP)	—included—	
<b>Optional:</b> Upgrade to variable speed pump -Acid feed pump (A45MP)	—included—	+\$200.00
<b>Optional:</b> Upgrade to variable speed pump	—included—	+\$200.00
-Safety pressure switch	—included—	
-Mounting panel, tubings, and fittings	—included—	
<b>Solid System Package</b>	<b>Part #</b>	<b>List Price</b>
-Controller:		
-XPC	SYSTEM-SX	\$4,625.00
-WTC	SYSTEM-SW	\$3,725.00
-SPC	SYSTEM-SS	\$3,325.00
- Electrodes	—included—	
- Flow cell	—included—	
-300-29X Rainbow feeder —included— (with 1/2" solenoid valve, 5/8" check valve, & 5/8" screen filter)		
-pH feed pump* (A45MP) <b>Optional:</b> Upgrade to variable speed pump	—included—	+\$200.00
-Mounting panel, tubings, and fittings	—included—	

**Components of Aqasol's System Packages can be purchased individually. Please refer to the table of contents for a complete list of parts that we offer.**

# Featuring the AUI Pool/Spa Interlock Device



- Sends operator alerts when flow is interrupted
  - Stops chemical pumps upon loss of flow
  - Simple to install on any existing chemical system
  - Exportable stored data via USB
  - Indicator LED flashes when new challenge test is required

## Aquasol AUI

### AUI Only

- Stops chemical pumps upon loss of flow
- Initiates and logs 30-day challenge tests

### AUI + Current Switch + Pressure Switch Bundle

- Stops chemical pumps upon loss of flow
- Initiates and logs 30-day challenge tests

### AUI + Current Switch + Flow Switch Bundle

- Stops chemical pumps upon loss of flow
- Initiates and logs 30-day challenge tests

## Part #

AUI-104 Interlock Device  
 AUI-393 110 V AC Receptacle x 2  
 S094 BNC Connector

AUI-104 Interlock Device  
 AUI-393 110 V AC Receptacle x 2  
 S094 BNC Connector  
 AUI Current Switch  
 MSCS-220015  
 AUI Pressure Switch Bundle

AUI-104 Interlock Device  
 AUI-393 110 V AC Receptacle x 2  
 S094 BNC Connector  
 AUI Current Switch  
 MSCS-220015  
 AUI Flow Switch w/ 25ft lead

## List Price

\$799.00

\$999.00

\$999.00

email: [sales@aquasol.com](mailto:sales@aquasol.com)  
 website: [www.aquasol.com](http://www.aquasol.com)

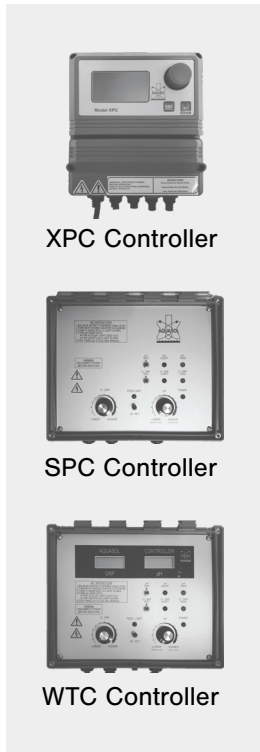
phone: 800-444-0675  
 fax: 713-683-6490

## Aquasol Controllers Agency Listings

Aquasol offers three types of controllers for commercial pool automation. We recommend purchasing them as part of a system package, but they can be purchased separately. The SPC and WTC are Intertek/ETL listed to UL standards, and the XPC is UL listed. All Aquasol Controllers are tested and listed to ANSI/NSF Std. 50



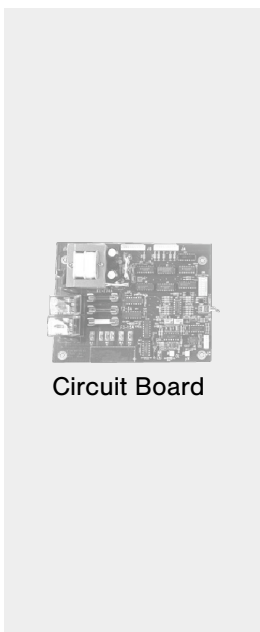
### Aquasol Chemical Controllers



	Part # XPC	List Price
Aquasol XPC -controls sanitizer and pH -includes safety pressure switch	Complete	\$4,225.00
Aquasol XPC with communications -controls sanitizer and pH -includes safety pressure switch	XPC-Wifi-Complete	\$4,995.00
Aquasol SPC* -controls sanitizer and pH Aquasol	SPC Complete	\$2,755.00
WTC* -controls sanitizer and pH -dual digital displays	WTC Complete	\$3,150.00
Preventative Maintenance -diagnostics, calibration, BNCs, and relays	PM01 (no discount)	\$195.00

\* 110V standard; 220V available.  
 All controllers include a sample flow cell, electrodes, and fitting

### Chemical Controller Parts



	Part #	List Price
1/4 Amp Fuse (Slo-Blo)	W342	\$2.88
3 Amp Fuse (Slo-Blo)	W343	\$2.88
15 Amp Fuse (Slo-Blo)	W344	\$2.88
3 Amp Fuse for XPC	X043	\$3.81
8 Amp Fuse for XPC	X044	\$3.81
Face Plate- Complete SPC	S360	\$489.50
Face Plate - Complete WTC	W360	\$795.50
Circuit Board - Red	S040R-ELT/NSF	\$659.62
Relay Model C	W341	\$20.35
Face Panel Knob	S065	\$8.60
Power Cord	W392	\$33.39
110 VAC Receptacle	W393-C	\$43.12
BNC	S094	\$19.68
Teflon Tape	S103	\$2.05
Circuit Board (IND-pH or IND-ORP)	I040	\$355.00
Face Panel (IND-pH or IND-ORP)	I060	\$355.00
Owner's Manual	S104-NSF	\$9.19



Electrode

Rainbow 300-29 Feeder

Tubing

Flow Cell Complete

### Electrodes

- ORP Electrode (3 ft cable with BNC)
- pH Electrode (3 ft cable with BNC)
- Grounding Electrode
- Electrode Fitting
- Cable Extensions (10 ft)

Part #	List Price
S010	\$204.00
S020	\$188.00
S005	\$100.00
F220	\$8.09
S028-10	\$43.84

### Erosion Feeders

- Pentair-Rainbow 300-29X (5/8" flex tubing)

Part #	List Price
R100	\$475.00

### Tubing

- Tubing 1/4" OD Black HDPE
- Tubing 1/4" OD Natural HDPE
- Tubing 3/8" OD Black HDPE
- Tubing 3/8" OD Natural HDPE

Part #	List Price
M015B	\$0.441 / ft
M015N	\$0.441 / ft
M016B	\$0.66 / ft
M016N	\$0.48 / ft

*Other tubing colors available. Call for pricing.*

### Flow Cell Parts

- Flow Cell Complete (includes fittings)
- Flow Cell Fitting Package (original fittings)
- Flow Cell Center (flow cell main body, no face)
- Flow Cell Face Plate
- Flow Cell O-Ring & Screw Kit (8 screws)
- Flow Cell / Injection Point Shutoff Valve (1/4" MNPT x 1/4" FNPT)
- Flow Cell Sample Valve (1/4" MNPT x 3/8" to 5/8" tapered hose barb)

Part #	List Price
S030	\$209.88
S030FP	\$47.58
S031	\$106.00
S032	\$35.15
S036A	\$16.45
M021	\$54.34
M022	\$54.44

### Safety Pressure Switch

- Safety Pressure Switch (0-6 psi)  
-for pool equipment installed above pool level
- Safety Pressure Switch (2-22 psi)  
-for pool equipment installed below pool level

Part #	List Price
M011	\$225.75
M011-HP	\$242.50

*A safety pressure switch is a REQUIRED component of a liquid chlorine system.*

## Safety First: The Aquasol Pressure Switch

### Why do we need the safety pressure switch?

The safety pressure switch eliminates the possibility of injecting chlorine and/or acid in the return line of the pool when there is no water flow. This can happen if the circulation pump is not operational or if the filter is in backwash.



### How does it work?

The chemical feeders are plugged into the Aquasol Controller, the controller is plugged in the safety pressure switch, and the safety pressure switch is plugged into a 120VAC power receptacle. The safety pressure switch is plumbed into the return line to the pool (see system diagrams on inside back cover). The pressure switch is internally adjusted to turn on when there is adequate pressure in the line and turn off when there is a loss of pressure. No manual reset is required.

**Note:** The Safety Pressure Switch is only one layer of protection, and swimmers should never be allowed in the pool when the circulation system is off or down. Please visit <http://www.poolinterlocksafety.com/> for more details.

## Fittings

## Part #

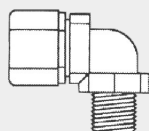
## List Price



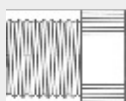
Female  
Connector



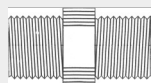
Male  
Connector



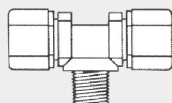
Male Elbow



Plug



Hex Pipe Nipple



Male Branch Tee

1/4" FNPT x 1/4" Tube Female Connector	F010	\$7.19
1/4" FNPT x 3/8" Tube Female Connector	F011	\$7.60
3/8" FNPT x 3/8" Tube Female Connector	F012	\$9.29
1/2" FNPT x 3/8" Tube Female Connector	F016	\$12.66
1/2" FNPT x 5/8" Tube Female Connector	F017	\$9.29
1/8" MNPT x 3/8" Tube Male Connector	F225	\$4.91
1/4" MNPT x 1/4" Tube Male Connector	F200	\$4.34
1/4" MNPT x 3/8" Tube Male Connector (Flow Cell Inlet/Outlet)	F230	\$6.03
1/4" MNPT x 1/2" Tube Male Connector	F227	\$6.05
1/4" MNPT x 5/8" Tube Male Connector	F446	\$8.68
3/8" MNPT x 3/8" Tube Male Connector	F210	\$4.98
3/8" MNPT x 1/2" Tube Male Connector	F240	\$7.25
1/2" MNPT x 3/8" Tube Male Connector	F215	\$7.28
1/2" MNPT x 1/2" Tube Male Connector (Electrode Fitting)	F220	\$8.09
1/2" MNPT x 1/2" Tube Male Connector (Non Electrode Fitting)	F222	\$9.96
1/2" MNPT x 5/8" Tube Male Connector	F250	\$9.44
3/4" MNPT x 5/8" Tube Male Connector	F255	\$9.34
3/4" MNPT x 3/8" Tube Male Connector	F260	\$9.29
1/4" MNPT x 1/4" Tube Male Elbow	F300	\$5.42
1/4" MNPT x 3/8" Tube Male Elbow	F330	\$9.13
3/8" MNPT x 1/4" Tube Male Elbow	F305	\$7.97
3/8" MNPT x 3/8" Tube Male Elbow	F310	\$7.59
1/2" MNPT x 3/8" Tube Male Elbow	F340	\$9.00
1/2" MNPT x 1/2" Tube Male Elbow	F320	\$9.29
1/2" MNPT x 5/8" Tube Male Elbow	F270	\$9.29
1/4" x 1/4" Tube Union	F400	\$7.83
3/8" x 1/4" Tube Union	F430	\$11.68
3/8" x 3/8" Tube Union	F410	\$8.34
3/8" x 1/2" Tube Union	F440	\$9.69
1/2" x 1/2" Tube Union	F420	\$9.79
5/8" x 3/8" Tube Union	F445	\$8.66
3/8" to 1/4" Tube Union	F512	\$4.66
1/8" MNPT Plug	F600	\$5.51
1/4" MNPT Plug (Flow cell plugs)	F610	\$1.72
3/8" MNPT Plug	F620	\$1.80
1/2" MNPT Plug	F630	\$1.98
3/4" MNPT Plug	F640	\$2.46
1/4" x 1/4" MNPT Hex Pipe Nipple	F700	\$1.83
1/4" x 3/8" MNPT Hex Pipe Nipple	F730	\$4.61
3/8" x 3/8" MNPT Hex Pipe Nipple	F710	\$4.61
3/4" x 3/4" MNPT Hex Pipe Nipple	F750	\$11.84
1/4" NPT x 1/4" Tube Male Branch Tee	F800	\$9.32
1/4" NPT x 3/8" Tube Male Branch Tee	F810	\$10.25
3/8" NPT x 3/8" Tube Male Branch Tee	F820	\$12.45
1/4" Tube Tee	F500	\$11.68
3/8" Tube Tee	F510	\$11.87
3/8" x 3/8" White Tube Tee	F515	\$8.54
3/8" x 1/4" White Tube Tee	F516	\$11.17
1/4" MNPT x 1/4" Tube (White, pressure switch straight fitting)	M011-115	\$6.33
1/8" FNPT x 1/4" Tube (White, pressure switch elbow fitting)	M011-120	\$5.08

### Solenoid Valves & Parts



3/4" Solenoid Valve

	Part #	List Price
1/2" PVC Solenoid Valve, 120V, no fittings	VAPVC-12	\$198.90
1/2" PVC Solenoid Valve, 120V, with 3/8" tube fittings	VAPVC-12-38	\$216.87
1/2" PVC Solenoid Valve, 120V, with 5/8" tube fittings	VAPVC-12-58	\$221.09
3/4" PVC Solenoid Valve, 120V, no fittings	VAPVC-34	\$226.66
3/4" PVC Solenoid Valve, 120V, with 5/8" tube fittings	VAPVC-34-5	\$249.17
1/2" PVC Solenoid Valve	VRPVC-12/34	\$59.00
Replacement Disaphragm (series 800)		
Power Cord for SS Solenoid Valve	V011	\$48.29
110V Coil for SS Solenoid Valve	V010	\$85.31

All solenoid valves are Viton and come with a power cord unless stated otherwise.

### Misc. Components



3/8" In-Line Check Valve



In-Line Filter



Sample Valve

	Part #	List Price
3/8" In-Line Check Valve (for 3/8" flex tube)	M010	\$47.76
5/8" Rainbow Check Valve (for 5/8" flex tube)	M190	\$57.72
1/2" Check Valve (for PVC, slip connections)	M150	\$118.98
3/4" Check Valve (for PVC, slip connections)	M160	\$142.67
Mounting Panel - Plastic, 22" x 22" (Pre-drilled to mount all components) 3/8"	M340	\$117.89
In-Line Filter w/ 3/8" Tubing Connection	M019	\$77.44
5/8" In-Line Filter w/ 5/8" Tubing Connection	M019B	\$74.75
Flow Cell / Injection Point Shutoff Valve	M021	\$51.75
(1/4" MNPT x 1/4" FNPT) Flow Cell Sample Valve	M022	\$51.85
(1/4" MNPT x 3/8" to 5/8" tapered hose barb)		

### Tube Size Selection Chart - Maximum GPD

Pump Model	Tube Size #1/HP	Tube Size #2/HP	Tube Size #3	Tube Size #4	Tube Size #5	Tube Size #7/HP
A45M/MP	3 GDP	10 GDP	22 GDP	35 GDP	50 GDP	22 GDP
A85M/MP	5 GDP	17 GDP	40 GDP	60 GDP	85 GDP	40 GDP
A100M/MP	6 GDP	20 GDP	44 GDP	70 GDP	100 GDP	N/A
A170M/MP	10 GDP	34 GDP	80 GDP	120 GDP	170 GDP	N/A

This chart is to be used as reference with complete pumps section on the following two pages.

**Complete Pumps**

**Part #**

**List Price**

**Single Head, Adjustable, Low Pressure**

45 M Series (50 GPD max) with 1/4" Accessories	A45Mxy14	\$809.46
45 M Series (50 GPD max) with 3/8" Accessories	A45Mxy38	\$856.25
85 M Series (85 GPD max) with 1/4" Accessories	A85Mxy14	\$809.46
85 M Series (85 GPD max) with 3/8" Accessories	A85Mxy38	\$856.23

**Dual Head, Adjustable, Low Pressure**

100 DM Series (100 GPD max) with 1/4" Accessories	A100DMxy14	\$1,120.89
100 DM Series (100 GPD max) with 3/8" Accessories	A100DMxy38	\$1,214.60
170 DM Series (170 GPD max) with 1/4" Accessories	A170DMxy14	\$1,120.89
170 DM Series (170 GPD max) with 3/8" Accessories	A170DMxy38	\$1,214.60

**Single Head, Adjustable, High Pressure**

3 GPD - #1 Tube - 1/4" Tubing	A45MHP2y14	\$840.63
3 GPD - #1 Tube - 3/8" Tubing	A45MHP2y38	\$887.40
5 GPD - #1 Tube - 1/4" Tubing	A85MHP5y14	\$840.63
5 GPD - #1 Tube - 3/8" Tubing	A85MHP5y38	\$887.40
10 GPD - #2 Tube - 1/4" Tubing	A45MHP10y14	\$840.63
10 GPD - #2 Tube - 3/8" Tubing	A45MHP10y38	\$887.40
17 GPD - #2 Tube - 1/4" Tubing	A85MHP17y14	\$840.63
17 GPD - #2 Tube - 3/8" Tubing	A85MHP17y38	\$887.40
22 GPD - #7 Tube - 1/4" Tubing	A45MHP22y14	\$840.63
22 GPD - #7 Tube - 3/8" Tubing	A45MHP22y38	\$887.40
40 GPD - #7 Tube - 1/4" Tubing	A85MHP40y14	\$840.63
40 GPD - #7 Tube - 3/8" Tubing	A85MHP40y38	\$887.40

**When installing a pump outdoors, rain roof (MP90000) should always be used.**

**Dual Head, Adjustable, High Pressure (Special Order)**

6 GPD - #1 Tube - 1/4" Tubing	A100DMHP5y14	\$1,183.09
6 GPD - #1 Tube - 3/8" Tubing	A100DMHP5y38	\$1,276.53
10 GPD - #1 Tube - 1/4" Tubing	A170DMHP9y14	\$1,183.09
10 GPD - #1 Tube - 3/8" Tubing	A170DMHP9y38	\$1,276.53
20 GPD - #2 Tube - 1/4" Tubing	A100DMHP20y14	\$1,183.09
20 GPD - #2 Tube - 3/8" Tubing	A100DMHP20y38	\$1,276.53
34 GPD - #2 Tube - 1/4" Tubing	A170DMHP34y14	\$1,183.09
34 GPD - #2 Tube - 3/8" Tubing	A170DMHP34y38	\$1,276.53

**Note:**  
 "x" should be replaced with tube size: 1,2,3,4,5,7  
 "y" should be replaced with voltage: 1=110V, 2=220V



Single Head Adjustable



Dual Head Adjustable

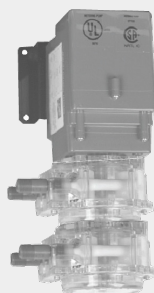


Dual Head Dual Control

## Complete Pumps (con't)



Single Head  
Fixed Rate



Dual Head  
Fixed Rate

### Single Head, Fixed Rate, Low Pressure

45 MP Series with 1/4" Accessories  
45 MP Series with 3/8" Accessories  
85 MP Series with 1/4" Accessories  
85 MP Series with 3/8" Accessories

Part #	List Price
A45MPxy14	\$581.60
A45MPxy38	\$628.75
A85MPxy14	\$581.60
A85MPxy38	\$628.57

### Dual Head, Fixed Rate, Low Pressure

100 DMP Series with 1/4" Accessories  
100 DMP Series with 3/8" Accessories  
170 DMP Series with 1/4" Accessories  
170 DMP Series with 3/8" Accessories

A100DMPxy14	\$823.23
A100DMPxy38	\$880.28
A170DMPxy14	\$823.23
A170DMPxy38	\$880.28

### Single Head, Fixed Rate, High Pressure

3 GPD - #1 Tube - 1/4" Tubing  
3 GPD - #1 Tube - 3/8" Tubing  
5 GPD - #1 Tube - 1/4" Tubing  
5 GPD - #1 Tube - 3/8" Tubing  
10 GPD - #2 Tube - 1/4" Tubing  
10 GPD - #2 Tube - 3/8" Tubing  
17 GPD - #2 Tube - 1/4" Tubing  
17 GPD - #2 Tube - 3/8" Tubing  
22 GPD - #7 Tube - 1/4" Tubing  
22 GPD - #7 Tube - 3/8" Tubing  
40 GPD - #7 Tube - 1/4" Tubing  
40 GPD - #7 Tube - 3/8" Tubing

#### Note:

"x" should be  
replaced with tube  
size: 1,2,3,4,5,7

"y" should be  
replaced with voltage:  
1=110V, 2=220V

A45MPHP2y14	\$613.11
A45MPHP2y38	\$660.22
A85MPHP5y14	\$613.11
A85MPHP5y38	\$660.22
A45MPHP10y14	\$613.11
A45MPHP10y38	\$660.22
A85MPHP17y14	\$613.11
A85MPHP17y38	\$660.22
A45MPHP22y14	\$613.11
A45MPHP22y38	\$660.22
A85MPHP40y14	\$613.11
A85MPHP40y38	\$660.22

### Dual Head, Fixed Rate, High Pressure (Special Order)

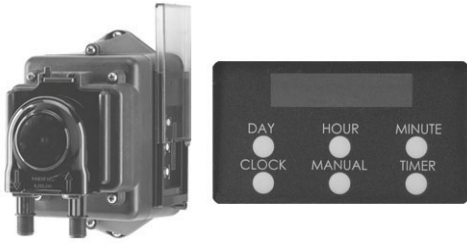
6 GPD - #1 Tube - 1/4" Tubing  
6 GPD - #1 Tube - 3/8" Tubing  
10 GPD - #1 Tube - 1/4" Tubing  
10 GPD - #1 Tube - 3/8" Tubing  
20 GPD - #2 Tube - 1/4" Tubing  
20 GPD - #2 Tube - 3/8" Tubing  
34 GPD - #2 Tube - 1/4" Tubing  
34 GPD - #2 Tube - 3/8" Tubing

A100DMPHP5y14	\$848.85
A100DMPHP5y38	\$943.23
A170DMPHP9y14	\$848.85
A170DMPHP9y38	\$943.23
A100DMPHP20y14	\$848.85
A100DMPHP20y38	\$943.23
A170DMPHP34y14	\$848.85
A170DMPHP34y38	\$943.23

# STENNER PUMPS®

## Stenner Pumps

## List Price



Stenner  
Econ T Series

The Econ T Series consists of programmable pumps with automatic dosing control for timed applications. This is a compact pump for light duty applications requiring a dosing schedule. In all models, 6 & 10 ft cords available.

Econ T Series Programmable Pump

Call for Pricing



## Emec Pumps

## List Price



Prisma Dosing Pump

PRISMA is a stepper motor-driven diaphragm dosing pump. Microprocessor-controlled stepper motor ensures an accurate and smooth dosing.

Prisma Dosing Pump

Call for Pricing

**Image Reference**

**QuickPro Pump Head & Parts**

**Part #**

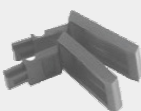
**List Price**

2



Pump Head

8



Latches

6

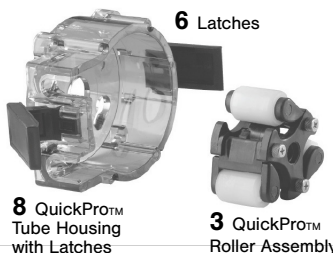
3

- QuickPro Pump Head Cover
  - 1-Pack
  - 4-Pack
- High Pressure QuickPro Pump Head (tube size 1, 2, or 7)
- High Pressure QuickPro Pump Head Service Kit (tube size 1, 2, or 7) QuickPro Pump Head (tube size 1, 2, 3, 4, or 5)
  - 1-Pack
  - 2-Pack
- QuickPro Pump Service Kit (tube size 1, 2, 3, 4, 5, or 7)
- QuickPro Tube Housing
  - 1-Pack
  - 2-Pack
- QuickPro Latch Only, 2-Pack
- Quick Roller Assembly
  - 1-Pack
  - 4-Pack

**Note:**

**“x” should be replaced with tube size.**

QP100-1	\$40.83
QP100-4	\$115.12
QP10X-1	\$198.20
QP10X-K	\$87.50
QP25X-1	\$183.53
QP25X-2	\$343.00
QP25XK	\$150.59
QP400-1	\$54.64
QP400-2	\$100.53
QP401-2	\$17.66
QP500-1	\$59.71
QP500-4	\$217.04



**Feed Tube Assemblies**

**Part #**

**List Price**



Standard Rollers



Roller Assembly



Feed Rate Control

- Feed Tube Assembly w/Ends, 2-Pack
- Feed Tube Assembly w/Ends, 5-Pack
- High Pressure Tubes with Duckbill, 2-Pack
- Econ Feed Tubes
  - 2-Pack (EC30A-2, EC30B-2, EC30C-2, EC30F-2, EC30G-2, EC30H-2)
  - 5-Pack (EC30A-5, EC30B-5, EC30C-5, EC30F-5, EC30G-5, EC30H-5)

UCCP20X	\$55.34
MCCP20X	\$122.34
UCCPXF	\$63.46

**Feed Tube Housing Parts Old Style**

**Part #**

**List Price**

- Roller Assembly, 1-Pack (Prior to May 2011)
- Roller Assembly, 4-Pack (Prior to May 2011)
- Standard Roller (Prior to May 2011)
- Roller Shaft Bushing (Prior to May 2011)
- Cover Screw “B”, 10-Pack
- Cover Screw “B”, 24-Pack
- Pump Head Service Kit

UC3ASYD	\$59.71
MC3ASYD	\$281.28
CP33000	\$5.37
CP31RSB	\$1.58
UCCPSOB	\$12.75
MCCPSOB	\$16.03
PSKL0X	\$122.34

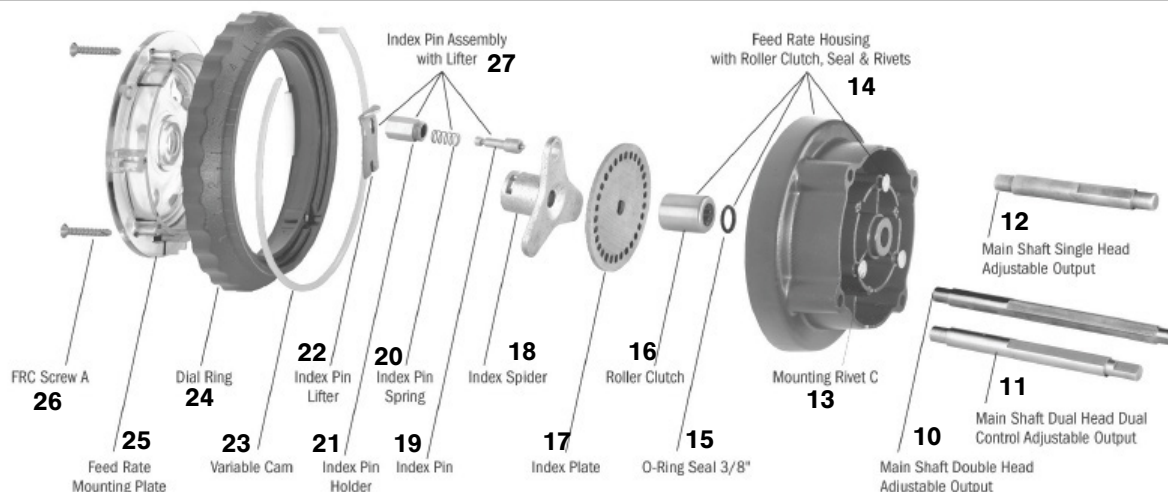
**Complete Feed Rate Assemblies**

**Part #**

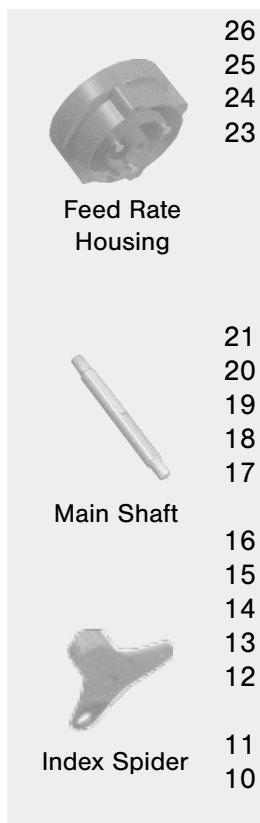
**List Price**

- Single Head Feed Rate Control w/Shaft
- Double Head Feed Rate Control w/Shaft
- Dual Head Dual Control Feed Rate Control w/Shaft

FC5040D	\$371.34
DM5040D	\$371.34
DM504DC	\$371.34



### Image Reference Feed Rate Parts



- 26 FRC Screw "A"
- 25 Feed Rate Mounting Plate
- 24 Dial Ring
- 23 Variable Cam, 2-Pack  
Variable Cam, 5-Pack
- 27 Index Pin Assembly with Lifter, 19, 20, 21 & 22, 1-Pack  
Index Pin Assembly with Lifter, 19, 20, 21 & 22, 2-Pack
- 22 Index Pin Lifter, 2-Pack  
Index Pin Lifter, 5-Pack
- 21 Index Pin Holder
- 20 Index Pin Spring
- 19 Index Pin
- 18 Index Spider
- 17 Index Plate, 1-Pack  
Index Plate, 5-Pack
- 16 Roller Clutch
- 15 O-Ring Seal 3/8"
- 14 Feed Rate Housing with Roller Clutch, Seal, and Rivets
- 13 Mounting Rivet "C"
- 12 Main Shaft for Single Head-Adjustable Rate, 1-Pack  
Main Shaft for Single Head-Adjustable Rate, 2-Pack
- 11 Main Shaft for Double Head-Adjustable Rate
- 10 Main Shaft for Dual Head Dual Control-Adjustable Rate

### Part #

### List Price

FCS000A	\$0.28
FC5N000	\$23.37
FC5M040	\$23.37
UCFC5H0	\$34.99
MCFC5H0	\$84.51
UCFC5AY	\$104.91
MCFC5AY	\$186.43
UCFC5L1	\$34.98
MCFC5L1	\$84.51
FC5L003	\$15.32
FC5L005	\$3.50
FC5L002	\$53.34
FC5K00D	\$52.46
UCFC5ID	\$39.34
MCFC5ID	\$148.55
FC5F000	\$34.91
FC5E000	\$3.81
FC5D00S	\$102.39
FCS000C	\$0.28
UCFC5AD	\$58.29
MCFC5AD	\$96.17
DM5A00D	\$47.66
DM5A0DC	\$45.83
FSK100	\$78.95

### Complete Gear Motor Assemblies for Adjustable Pumps

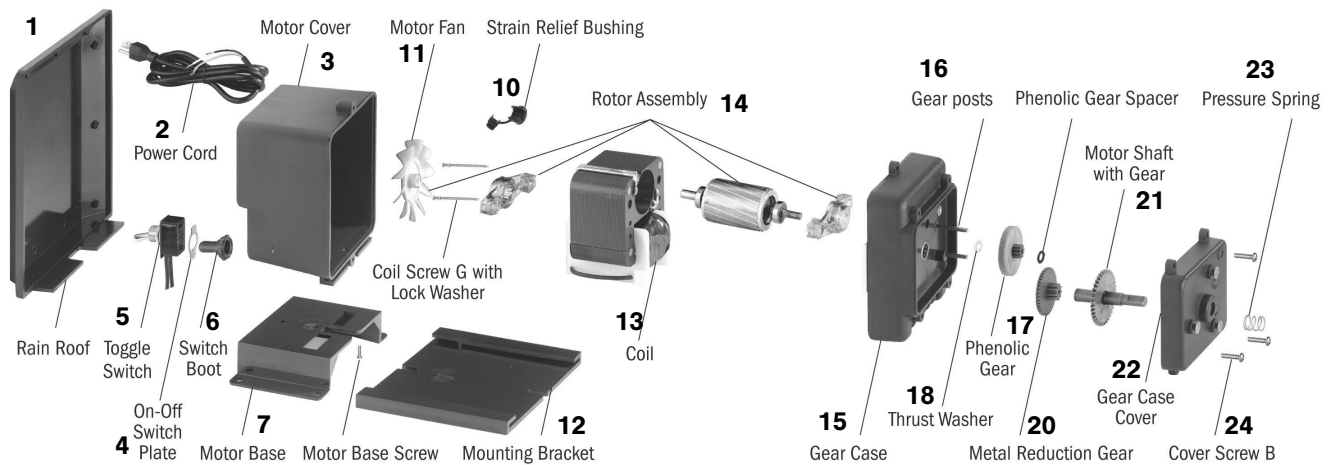
Series 45 & 100 - Complete Gear Motor 120v 60Hz	PM6041D	\$386.07
Series 45 & 100 - Complete Gear Motor 220v 60Hz	PM6042D	\$386.07
Series 85 & 170 - Complete Gear Motor 120v 60Hz	PM6081D	\$386.07
Series 85 & 170 - Complete Gear Motor 220v 60Hz	PM6082D	\$386.07

### Complete Gear Motor Assemblies for Fixed Rate Pumps

Series 45MP - Complete Gear Motor 120v 60Hz	ME6041D	\$383.64
Series 45MP - Complete Gear Motor 220v 60Hz	ME6042D	\$383.64
Series 85MP - Complete Gear Motor 120v 60Hz	ME6081D	\$383.64
Series 85MP - Complete Gear Motor 220v 60Hz	ME6082D	\$383.64
Series 170DMP - Complete Gear Motor 120v 60Hz	DM6081D	\$393.78



Gear Motor Assembly



**Image Reference**

**Gear Motor Parts**

**Part #**

**List Price**

1	Rain Roof	MP90000	\$24.63
2	Power Cord, 120V	MP6B010	\$12.69
	Power Cord, 220V	MP6B020	\$15.03
3	Motor Housing with cord, 120V	PM6A0BL	\$76.60
	Motor Housing with cord, 220V	PM6A00L	\$76.60
4	On-Off Switch Plat	MP6D000	\$1.05
5	Toggle Switch	PM6E000	\$18.78
6	Switch Boot	MP6C000	\$9.52
7	Motor Base	MP70000	\$29.85
10	Strain Relief Bushing	MP6V000	\$2.31
11	Motor Fan	PM6F000	\$11.71
12	Mounting Bracket	MP80000	\$12.62
13	Coil 120v 60Hz	MP6J115	\$111.41
	Coil 220v 60Hz	MP6J226	\$111.41
14	Rotor Assembly with Bearings, Brackets & Tolerance Ring	PMBRPL2	\$116.86
15	Gear Case	PM6K0BL	\$63.49
16	Gear Post	PM6M000	\$5.78
17	Phenolic Gear (26RPM - Series 45 & 100)	MP6N040	\$34.81
	Phenolic Gear (44RPM - Series 85 & 170)	MP6N080	\$34.81
18	Thrust Washer	MP6P000	\$1.17
20	Metal Reduction Gear (26RPM - Series 45 & 100)	MP60040	\$40.66
	Metal Reduction Gear (44RPM - Series 85 & 170)	MP60080	\$40.66
21	Motor Shaft with Gear (Adjustable Rate Models)	MP6Q00D	\$32.47
	Motor Shaft with Gear (Single Head-Fixed Rate Models)	ME6Q0LD	\$44.88
	Motor Shaft with Gear (Double Head-Fixed Rate Models)	DM6Q0LD	\$50.97
22	Gear Case Cover	PM6R0BL	\$63.49
23	Pressure Spring	MP6T000	\$1.62
24	Cover Screw "B", 10-Pack	UCCPSOB	\$11.71
	Cover Screw "B", 24-Pack	MCCPSOB	\$16.03
	Motor Service Kit 120v	MSK120	\$189.48
	Motor Service Kit 220v	MSK220	\$189.48
	Gearcase Service Kit	GSK45A	\$153.78
	Gearcase Service Kit	GSK85A	\$153.78

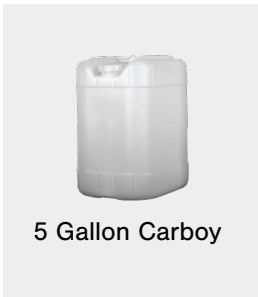
### Miscellaneous Stenner Parts



Connecting Nut	Connecting Nut 1/4", 10-Pack
	Connecting Nut 1/4", 24-Pack
	Ferrule 1/4", 10-Pack
	Ferrule 1/4", 24-Pack
	Injection Fitting w/Nut & Ferrule 1/4", 1-Pack
	Injection Fitting w/Nut & Ferrule 1/4", 5-Pack
	Injection Fitting w/Nut-3/8", 1-Pack
	Injection Fitting w/Nut-3/8", 5-Pack
	Ceramic Weight w/1/4" Clip, 1-Pack
	Ceramic Weight w/1/4" Clip, 5-Pack
	Ceramic Weight w/3/8" Clip, 1-Pack
	Ceramic Weight w/3/8" Clip, 5-Pack
	Flow Indicator, 1/4"
	Flow Indicator, 3/8"
	Suction Line Strainer 1/4"
	Suction Line Strainer 3/8"
	Grease
	Injection Check Valve 1/4", 1-Pack
	Injection Check Valve 1/4", 5-Pack
	Injection Check Valve 3/8", 1-Pack
	Injection Check Valve 3/8", 5-Pack
	Check Valve Duckbill only, 2-Pack
	Check Valve Duckbill only, 5-Pack
	Connecting Nut 3/8" with Lead Tube Adapter, 2-Pack
	Connecting Nut 3/8" with Lead Tube Adapter, 5-Pack
	Injection Fitting Only 1/4"
	Injection Fitting Only 3/8"
	Check Valve O-Ring

Part #	List Price
UCAK100	\$29.85
MCAK100	\$64.12
UCAK200	\$13.44
MCAK200	\$20.42
UCAK300	\$16.03
MCAK300	\$46.61
UCAK400	\$19.50
MCAK400	\$97.50
UCCW1400	\$28.29
MCCW1400	\$148.50
UCMAC38	\$23.38
MCMAC38	\$74.32
AK600	\$31.82
AK700	\$31.82
ST114	\$33.93
ST138	\$33.93
MAGRE55	\$82.69
UCDBINJ	\$27.71
MCDBINJ	\$101.92
UCINJ38	\$34.27
MCINJ38	\$138.41
UCCVDB0	\$18.22
MCCVDB0	\$30.58
UCADPTR	\$21.80
MCADPTR	\$50.27
CVIJ1/4	\$6.10
CVIJ3/8	\$6.10
CVIJOR	\$5.31

### Chemical Tanks



Part #	List Price
T705	\$70.88
T715	\$67.66
T730	\$217.11
T755	\$224.68
T175	\$934.73
T175-Insert	\$684.95
T175-Gauge	\$312.00

*Note: Tanks different from sizes listed are available by special order only.*

## Aquasol Bleach Storage Tank



Aquasol's Bleach Storage Tank for commercial pool facilities can store 3x the amount of bleach as a 55 gallon drum in the same space. A tank insert can be added if regulations require spill containment. The tapered design allows tanks to be stacked to save on shipping costs. High density polyethylene 1.9 S.G.

### Tank Insert (140 gallon capacity)

- Fits inside tank
- Meets spill containment regulations
- Insert will not float
- Tapered for stackability
- 23" dia. x 65" h; 66 lbs.

### Bleach Storage Tank (175 gallon capacity)

- Same footprint as 55 gallon drum
- Removable lock-down lid
- 8" vented fill cap
- Yellow color; UV inhibited
- Tapered for stackability
- 26" dia. x 72" h; 75 lbs.

## STS Tank Series

## Part #

## List Price

The STS Tank Series are self-contained systems designed to store and feed liquid chemicals. Unit consists of a polyethylene tank, Aquasol/Stenner feed pump, rain roof, and spill recovery system. This chemical feed system can be positioned, connected, filled and started in a matter of minutes.

### Tank w/A45M or A85M Variable Pump, 1/4" Tubing & Accessories

-7.5 Gallons	STS7.5zA45(85)Mx114	\$1,724.34
-15 Gallons	STS15zA45(85)Mx114	\$2,220.52
-30 Gallons	STS30zA45(85)Mx114	\$2,441.61

### Tank w/A45MHP or A85MHP Variable Pump, 1/4" Tubing & Accessories

-7.5 Gallons	STS7.5zA45(85)MHPx114	\$2,150.61
-15 Gallons	STS15zA45(85)MHPx114	\$2,411.96
-30 Gallons	STS30zA45(85)MHPx114	\$2,396.81

*All options above are also available with 3/8" tubing & accessories. Call for pricing. To substitute fixed rate pump, subtract \$100.00 per system*

### Tank only, Natural or Gray

-7.5 Gallons	STS7.5z	\$300.29
-15 Gallons	STS15z	\$350.00
-30 Gallons	STS30z	\$536.33

*The "z"s must be replaced with tank color: GC = gray, NC = natural.*

## Misc Field Service Equipment

## Part #

## List Price

LCD Display ORP Meter -for electrode testing	M020	\$353.23
TDS Meter	M040	\$189.14
Calibration Tool -for adjustment of calibration screws on circuit board	M025	\$8.22
Tap & Drill Bit for Installation -Tap = 1/4" NPT, Bit = 7/16", Shaft = 3/8"	M026	\$115.00

**email: sales@aquasol.com**  
**website: www.aquasol.com**

**phone:800-444-0675**  
**fax:713-683-6490**

## Index

Dealer Discount Information	1	Complete Pumps Stenner and Emec Pumps	8-9
Aquasol System Packages	2	Pump Parts	10
The AUI	3	Feed Tube Assemblies	11
Aquasol Chemical Controllers	4	Feed Rate Assemblies and Parts Gear	11-12
Chemical Controller Parts	4	Motor Assemblies	12
Electrodes	5	Gear Motor Parts	13
Erosion Feeders	5	Miscellaneous Stenner Parts	14
Tubing	5	Chemical Tanks	14-15
Flow Cell Parts	5	STS Tanks	15
Safety Pressure Switch	5	Miscellaneous Field Service Equipment	15
Fittings 6 Solenoid Valves and Parts	7		
Miscellaneous Components	7		

## Regular Hours

Monday - Friday  
8:00 AM - 5:00 PM CST

## Shipments / Returns / Repairs

All orders are shipped F.O.B. UPS or FedEx per ordering instructions. We will ship to you as fast as needed, F.O.B. Houston. We encourage our customers to check their shipments as soon as they are received to make sure everything arrived. All damaged items must be noted on the delivery receipt. All shortages and damages must be called into Aquasol Controllers within 48 hours of receipt, 1-800-444-0675. Aquasol Controllers offers a 30- day return policy (60 days on controllers). **To return merchandise at any time, you must call Aquasol at 1-800-444-0675 for a Return Goods Authorization number (RGA).** At our discretion, we may still authorize the return after 30 days (60 for controllers), and a 35% re-stocking fee may be applied. Include a copy of your invoice or packing slip with your return including the RGA number. We make every attempt to repair shipments the same day they are received. All non-warranty repairs are subject to a minimum one hour labor charge.

## Limited Warranty

We reserve the right to repair or replace all defective parts. Aquasol Controllers is not responsible for any removal or installation costs. Any tampering with major components, chemical damage, faulty wiring, weather conditions, power surges, or products not used with reasonable care and maintained in accordance with the instructions packed with each product will void the warranties. We make no other warranty expressed or implied. Call for an RGA number.

### Warranties on Core Items

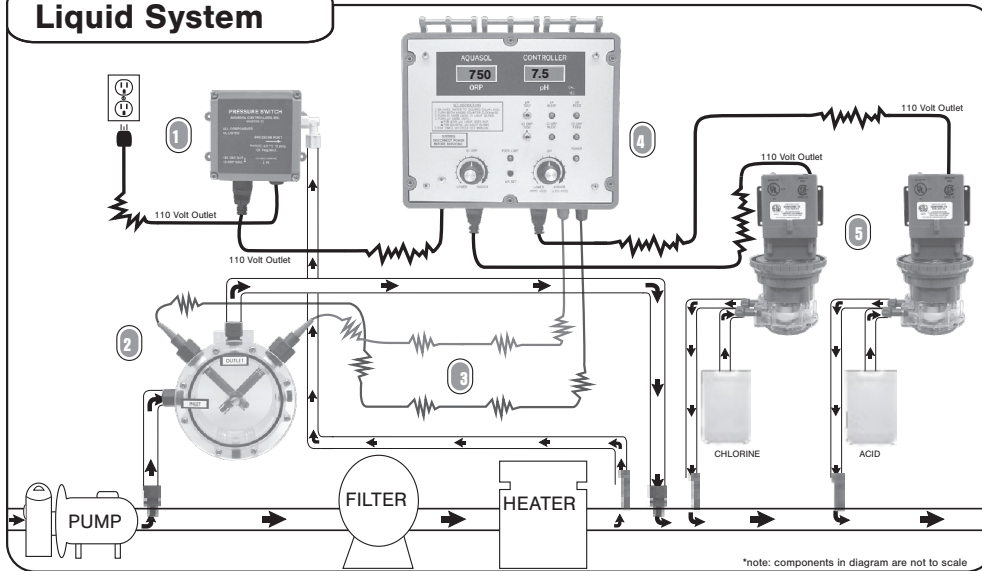
Aquasol Controllers	1 year warranty on the controller. 5 year Warranty on the main circuit module.
Electrodes	1 year warranty. (Does not include electrodes damaged from misuse/abuse)
Aquasol Diaphragm/Metering Pumps	1 year material & workmanship. 5 years Warranty on Diaphragm.
Pressure Switch	90 day warranty.
Solenoid Valve	90 day warranty.
Rainbow Feeders	1 year warranty.

## Credit / Pricing

Major Credit Cards Accepted • Net 30 days subject to credit approval.  
Pricing may be subject to change at the time of order without prior notice.

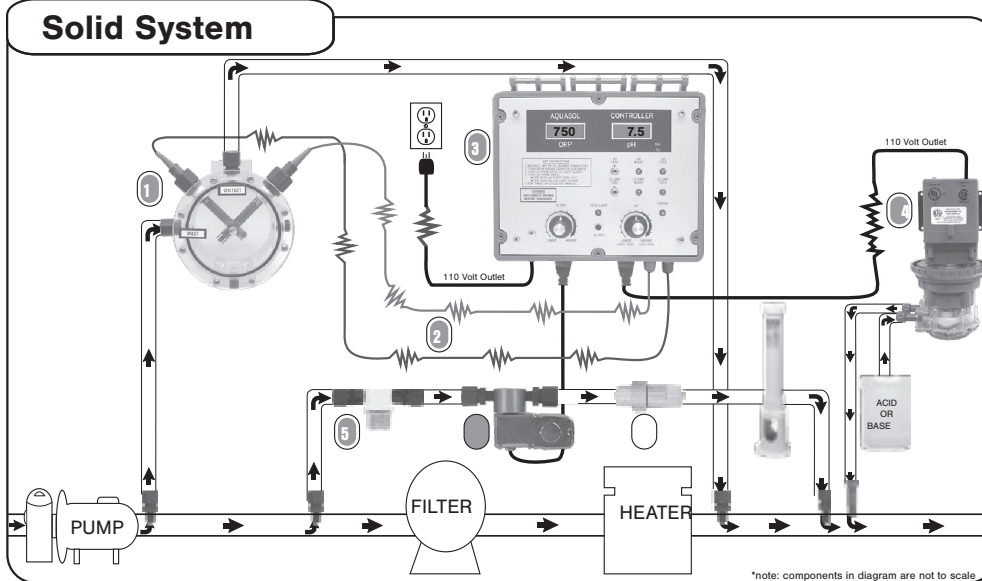
# Aquasol System Packages

## Liquid System



- 1 The safety pressure switch verifies that the circulation system is operational before it allows the system to inject chemicals. This is required with a liquid system.
- 2 The sample flow cell, which is required, provides the probes with a turbulence, velocity, and debris-free area to test the water.
- 3 As the probes test the water, the chemical readings are continuously transmitted to the controller.
- 4 The controller interprets the chemical readings from the probes and activates the chemical pumps as needed.
- 5 The chemical pumps inject chlorine or acid as they are activated by the controller.

## Solid System

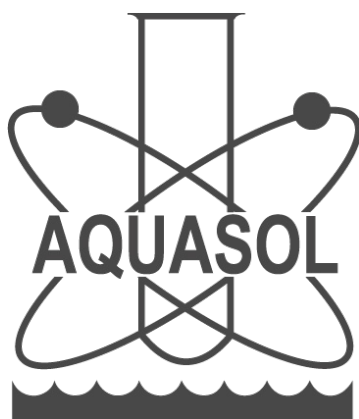


- 1 The sample flow cell, which is required, provides the probes with a turbulence, velocity, and debris-free area to test the water.
- 2 As the probes test the water, the chemical readings are continuously transmitted to the controller.
- 3 The controller interprets the chemical readings from the probes and activates the chemical feeders as needed.
- 4 The acid or base pump injects acid or base as it is activated by the controller.
- 5 The in-line filter helps to keep the solenoid valve clean.
- 6 The solenoid valve controls the flow of water through the chlorinator. It remains closed until activated by the controller.
- 7 The check valve prevents highly chlorinated water from backing up from the chlorinator and damaging the solenoid valve when it is closed.

Note: Each system can be used with any controller. The controller pictured is only an example.

# **Aquasol Controllers, Inc.**

**We Simply Control Pools. Since 1975.**



## **CONTACT US**

**P: 800-444-0675**

**F: 713-683-6490**

**E: [sales@aquasol.com](mailto:sales@aquasol.com)**

**MONDAY - FRIDAY**

**8:00 AM - 5:00 PM**

**[www.aquasol.com](http://www.aquasol.com)**