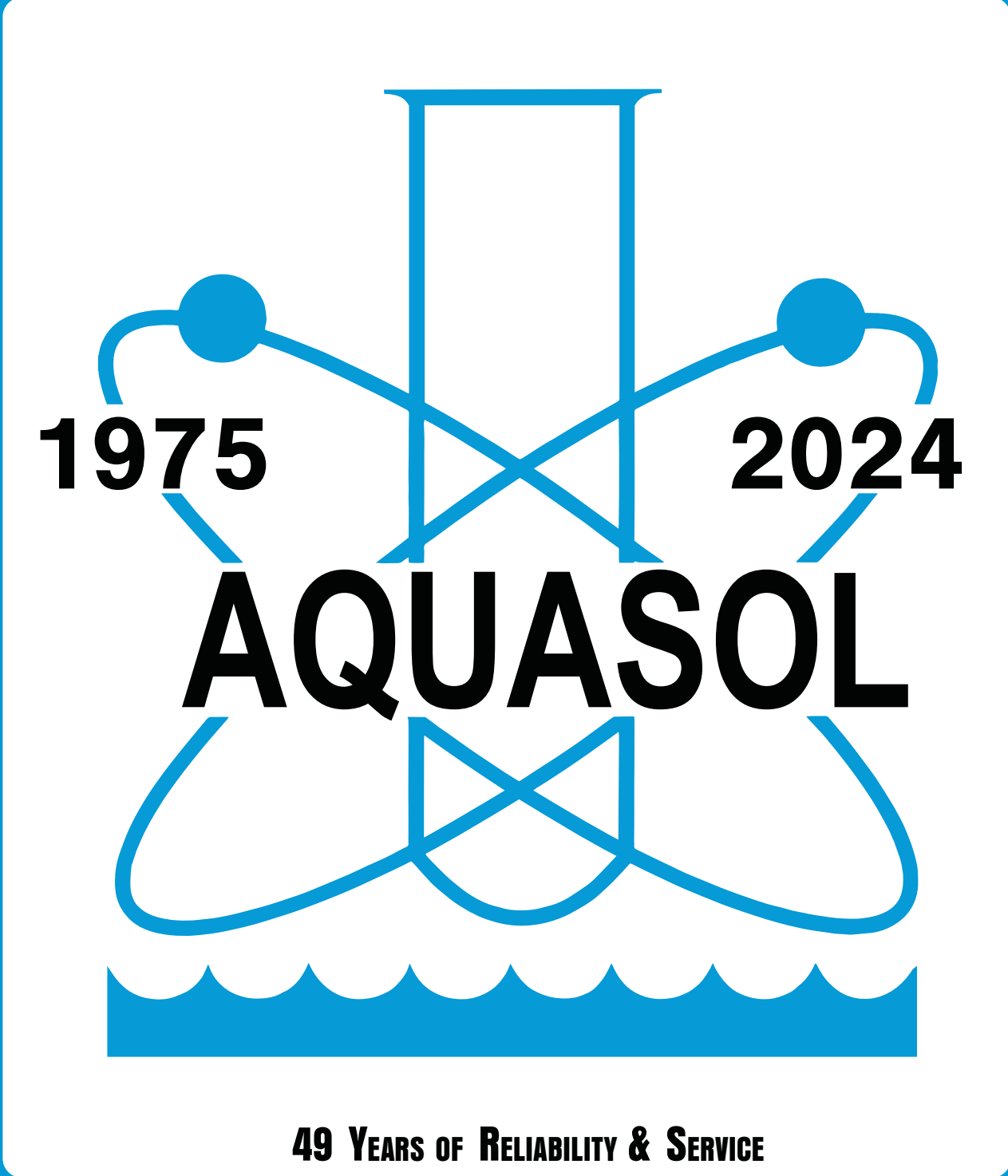


Aquasol Controllers, Inc.

2024 Price Guide



49 YEARS OF RELIABILITY & SERVICE

www.aquasol.com

We Simply Control Pools. Since 1975.

1-800-444-0675

49 YEARS OF AQUASOL CONTROLLERS!

Dear Valued Customer,

Aquasol Controllers is the industry leader in chemical automation equipment for pools and spas. We are proud to have developed a truly wireless alert system that connects your chemical controller to your mobile device, allowing for real-time alerts to be sent directly to pool operators and other stakeholders.

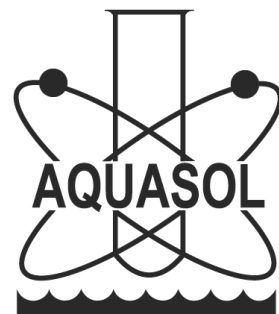
As we head into a new year, we aim to continue developing solutions like this to keep pushing the limits of chemical automation. Thank you for trusting us to provide the highest quality of chemical automation and pool equipment.

With gratitude,
The Aquasol Team

CONTACT US

P: 800-444-0675
F: 713-683-6490
E: SALES@AQUASOL.COM

MONDAY - FRIDAY
8:00 AM - 5:00 PM



Product Discount Categories for Aquasol Dealers

Products listed within this price guide fall into one of three categories. Each category has a different maximum dealer discount from the listed price. Please contact us with any questions

Your Aquasol Dealer Discount

CATEGORY 1	CATEGORY 2	CATEGORY 3

Product	Category	Pages
System Packages	1	2
The AUI	N/A	3
Controllers	1	4
Controller Parts	3	4
Preventative Maintenance Service	N/A	4
Electrode Components		
Electrodes	2	5
Electrode Fitting	3	5
Cable Extensions	3	5
Erosion Feeders		
Stand-alone Feeder	3	5
Feeder Parts	3	5
Tubing, All	3	5
Flow Cell		
Flow Cell Complete	2	5
Flow Cell Parts, All	3	5
Safety Pressure Switch	2	5
Fittings, All	3	6
Solenoid Valves, Complete & Parts	3	7
Miscellaneous:		
Valves, Flow Meter, In-Line Filters	3	77
Mounting Panel	3	
Field Service Equipment	3	
Chemical Feed Pumps	2	8-10
Pump Parts / Accessories	3	10-13
Chemical Tanks, All	3	15
STS Tank Series	2	15
SpinTouch Water Testing Equipment	N/A	16

Featuring the XPC Controller - Now with WiFi / Ethernet Communications!



- ORP/pH control
- Integrated pressure switch
- Optional flow switch
- True proportional feeding with pulse input pumps
- Tank level monitoring
- TO rate calculation/display
- Flow totalizer
- IP65/NEMA 4X enclosure
- Online access for data monitoring
- Cloud data backup
- WiFi/Ethernet alerts

Aquasol System Packages



Liquid System Package

Aquasol System Packages are our all-inclusive solution to chemical automation. Each board will include a chemical controller, electrodes, flow cell, pumps, and all other relevant components. The comprehensive lists for the solid and liquid systems are below.

Each system can be used with any controller. The controller pictured is only an example.

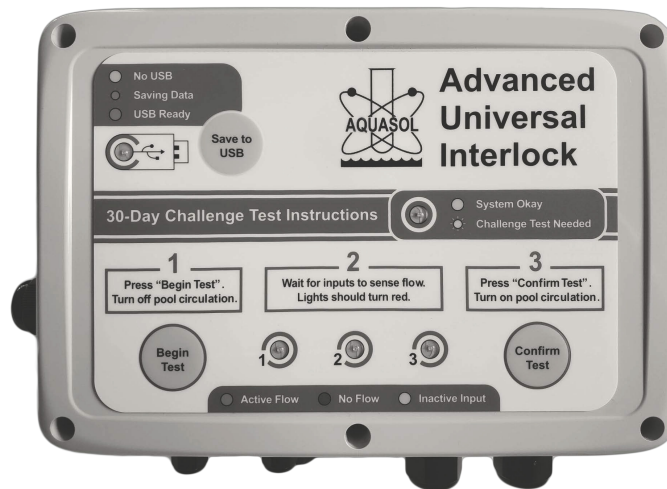


Solid System Package

Liquid System Package	Part #	List Price
-Controller:		
-XPC	SYSTEM-LX	\$4,483.00
-XPC with communications	SYSTEM-LXWIFI	\$5,433.00
-WTC	SYSTEM-LW	\$3,485.00
-SPC	SYSTEM-LS	\$3,116.00
- Electrodes	—included—	
- Flow cell	—included—	
-Chlorine feed pump (A85MP or A45MP)	—included—	
Optional: Upgrade to variable speed pump -Acid feed pump (A45MP)	—included—	+\$200.00
Optional: Upgrade to variable speed pump		+\$200.00
-Safety pressure switch	—included—	
-Mounting panel, tubings, and fittings	—included—	
Solid System Package	Part #	List Price
-Controller:		
-XPC	SYSTEM-SX	\$4,403.00
-WTC	SYSTEM-SW	\$3,485.00
-SPC	SYSTEM-SS	\$3,145.00
- Electrodes	—included—	
- Flow cell	—included—	
-300-29X Rainbow feeder —included— (with 1/2" solenoid valve, 5/8" check valve, & 5/8" screen filter)		
-pH feed pump* (A45MP) Optional: Upgrade to variable speed pump	—included—	+\$200.00
-Mounting panel, tubings, and fittings	—included—	

Components of Aquasol's System Packages can be purchased individually. Please refer to the table of contents for a complete list of parts that we offer.

Featuring the AUI Pool/Spa Interlock Device



- Sends operator alerts when flow is interrupted
- Stops chemical pumps upon loss of flow
- Simple to install on any existing chemical system
- Exportable stored data via USB
- Indicator LED flashes when new challenge test is required

Aquasol AUI

AUI Only

- Stops chemical pumps upon loss of flow
- Initiates and logs 30-day challenge tests

AUI + Current Switch + Pressure Switch Bundle

- Stops chemical pumps upon loss of flow
- Initiates and logs 30-day challenge tests

AUI + Current Switch + Flow Switch Bundle

- Stops chemical pumps upon loss of flow
- Initiates and logs 30-day challenge tests

Part

AUI-104 Interlock Device
 AUI-393 110 V AC Receptacle x 2
 S094 BNC Connector

AUI-104 Interlock Device
 AUI-393 110 V AC Receptacle x 2
 S094 BNC Connector
 AUI Current Switch
 MSCS-220015
 AUI Pressure Switch Bundle

AUI-104 Interlock Device 999.00
 AUI-393 110 V AC Receptacle x 2
 S094 BNC Connector
 AUI Current Switch
 MSCS-220015
 AUI Flow Switch w/ 25ft lead

List Price

799.00

999.00

Aquasol Controllers Agency Listings

Aquasol offers three types of controllers for commercial pool automation. We recommend purchasing them as part of a system package, but they can be purchased separately. The SPC and WTC are Intertek/ETL listed to UL standards, and the XPC is UL listed. All Aquasol Controllers are tested and listed to ANSI/NSF Std. 50



Aquasol Chemical Controllers

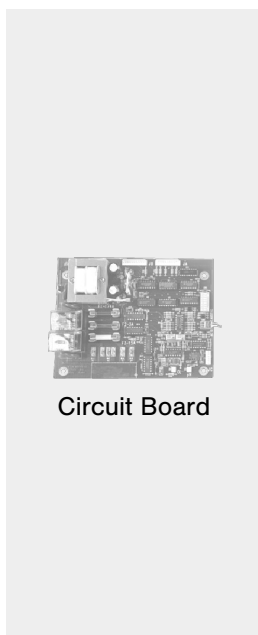


	Part #	List Price
Aquasol XPC -controls sanitizer and pH -includes safety pressure switch	XPC Complete	4,145.00 4,995.00
Aquasol XPC with communications -controls sanitizer and pH -includes safety pressure switch	XPC-Wifi-Complete	
Aquasol SPC* -controls sanitizer and pH Aquasol	SPC Complete	2,755.00
WTC* -controls sanitizer and pH -dual digital displays	WTC Complete	3,050.00
Preventative Maintenance -diagnostics, calibration, BNCs, and relays	PM01 (no discount)	175.00

* 110V standard; 220V available.

All controllers include a sample flow cell, electrodes, and fitting

Chemical Controller Parts



	Part #	List Price
1/4 Amp Fuse (Slo-Blo)	W342	2.88
3 Amp Fuse (Slo-Blo)	W343	2.88
15 Amp Fuse (Slo-Blo)	W344	2.88
3 Amp Fuse for XPC	X043	3.56
8 Amp Fuse for XPC	X044	3.56
Face Plate- Complete SPC	S360	489.50
Face Plate - Complete WTC	W360	795.50
Display Meters for WTC Face Plate	W061	340.00
Circuit Board - Red	S040R-ELT/NSF	640.40
Relay Model C	W341	20.35
Face Panel Knob	S065	8.35
Power Cord	W392	33.39
110 VAC Receptacle	W393	43.12
BNC	S094	19.68
Teflon Tape	S103	2.05
Circuit Board (IND-pH or IND-ORP)	I040	346.50
Face Panel (IND-pH or IND-ORP)	I060	346.50
Owner's Manual	S104	9.19

Electrodes

ORP Electrode (3 ft cable with BNC)
 pH Electrode (3 ft cable with BNC)
 Grounding Electrode
 Electrode Fitting
 Cable Extensions (10 ft)

Part #	List Price
S010	204.00
S020	183.00
S005	100.00
F220	7.93
S028-10	43.84



Electrode

Erosion Feeders

Pentair-Rainbow 300-29X (5/8" flex tubing)

Part #	List Price
R100	403.00



Rainbow 300-29 Feeder

Tubing

Tubing 1/4" OD Black HDPE
 Tubing 1/4" OD Natural HDPE
 Tubing 3/8" OD Black HDPE
 Tubing 3/8" OD Natural HDPE

Part #	List Price
M015B	0.39 / ft
M015N	0.42 / ft
M016B	0.60 / ft
M016N	0.76 / ft

Other tubing colors available. Call for pricing.

Flow Cell Parts

Flow Cell Complete (includes fittings)
 Flow Cell Fitting Package (original fittings)
 Flow Cell Center (flow cell main body, no face)
 Flow Cell Face Plate
 Flow Cell O-Ring & Screw Kit (8 screws)
 Flow Cell / Injection Point Shutoff Valve
 (1/4" MNPT x 1/4" FNPT)
 Flow Cell Sample Valve
 (1/4" MNPT x 3/8" to 5/8" tapered hose barb)

Part #	List Price
S030	209.88
S030FP	47.58
S031	106.00
S032	35.15
S036A	16.45
M021	51.75
M022	51.85



Tubing



Flow Cell Complete

Safety Pressure Switch

Safety Pressure Switch (0-6 psi)
 -for pool equipment installed above pool level
 Safety Pressure Switch (2-22 psi)
 -for pool equipment installed below pool level

Part #	List Price
M011	215.00
M011-HP	242.50

A safety pressure switch is a REQUIRED component of a liquid chlorine system.

Safety First: The Aquasol Pressure Switch

Why do we need the safety pressure switch?

The safety pressure switch eliminates the possibility of injecting chlorine and/or acid in the return line of the pool when there is no water flow. This can happen if the circulation pump is not operational or if the filter is in backwash.



How does it work?

The chemical feeders are plugged into the Aquasol Controller, the controller is plugged in the safety pressure switch, and the safety pressure switch is plugged into a 120VAC power receptacle. The safety pressure switch is plumbed into the return line to the pool (see system diagrams on inside back cover). The pressure switch is internally adjusted to turn on when there is adequate pressure in the line and turn off when there is a loss of pressure. No manual reset is required.

Note: The Safety Pressure Switch is only one layer of protection, and swimmers should never be allowed in the pool when the circulation system is off or down. Please visit <http://www.poolinterlocksafety.com/> for more details.

email: sales@aquasol.com
 website: www.aquasol.com

phone: 800-444-0675
 fax: 713-683-6490

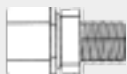
Fittings

Part

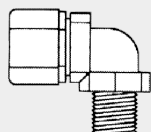
List Price



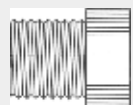
Female
Connector



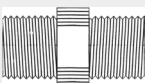
Male
Connector



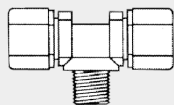
Male Elbow



Plug



Hex Pipe Nipple



Male Branch Tee

1/4" FNPT x 1/4" Tube Female Connector	F010	7.05
1/4" FNPT x 3/8" Tube Female Connector	F011	7.45
3/8" FNPT x 3/8" Tube Female Connector	F012	9.11
1/2" FNPT x 3/8" Tube Female Connector	F016	12.41
1/2" FNPT x 5/8" Tube Female Connector	F017	9.11
1/8" MNPT x 3/8" Tube Male Connector	F225	4.81
1/4" MNPT x 1/4" Tube Male Connector	F200	4.25
1/4" MNPT x 3/8" Tube Male Connector (Flow Cell Inlet/Outlet)	F230	5.91
1/4" MNPT x 1/2" Tube Male Connector	F227	5.93
1/4" MNPT x 5/8" Tube Male Connector	F446	8.51
3/8" MNPT x 3/8" Tube Male Connector	F210	4.88
3/8" MNPT x 1/2" Tube Male Connector	F240	7.11
1/2" MNPT x 3/8" Tube Male Connector	F215	7.14
1/2" MNPT x 1/2" Tube Male Connector (Electrode Fitting)	F220	7.93
1/2" MNPT x 1/2" Tube Male Connector (Non Electrode Fitting)	F222	9.76
1/2" MNPT x 5/8" Tube Male Connector	F250	9.25
3/4" MNPT x 5/8" Tube Male Connector	F255	9.16
3/4" MNPT x 3/8" Tube Male Connector	F260	9.11
1/4" MNPT x 1/4" Tube Male Elbow	F300	5.31
1/4" MNPT x 3/8" Tube Male Elbow	F330	8.95
3/8" MNPT x 1/4" Tube Male Elbow	F305	7.81
3/8" MNPT x 3/8" Tube Male Elbow	F310	7.44
1/2" MNPT x 3/8" Tube Male Elbow	F340	8.82
1/2" MNPT x 1/2" Tube Male Elbow	F320	9.11
1/2" MNPT x 5/8" Tube Male Elbow	F270	9.11
1/4" x 1/4" Tube Union	F400	7.68
3/8" x 1/4" Tube Union	F430	11.45
3/8" x 3/8" Tube Union	F410	8.18
3/8" x 1/2" Tube Union	F440	9.50
1/2" x 1/2" Tube Union	F420	9.60
5/8" x 3/8" Tube Union	F445	8.11
3/8" to 1/4" Tube Union	F512	4.57
1/8" MNPT Plug	F600	5.40
1/4" MNPT Plug (Flow cell plugs)	F610	1.69
3/8" MNPT Plug	F620	1.76
1/2" MNPT Plug	F630	1.94
3/4" MNPT Plug	F640	2.41
1/4" x 1/8" MNPT Hex Pipe Nipple	F695	1.68
1/4" x 1/4" MNPT Hex Pipe Nipple	F700	1.79
1/4" x 3/8" MNPT Hex Pipe Nipple	F730	4.52
3/8" x 3/8" MNPT Hex Pipe Nipple	F710	4.52
3/4" x 3/4" MNPT Hex Pipe Nipple	F750	11.61
1/4" NPT x 1/4" Tube Male Branch Tee	F800	9.14
1/4" NPT x 3/8" Tube Male Branch Tee	F810	10.05
3/8" NPT x 3/8" Tube Male Branch Tee	F820	12.21
1/4" Tube Tee	F500	11.45
3/8" Tube Tee	F510	11.64
3/8" x 3/8" White Tube Tee	F515	8.37
3/8" x 1/4" White Tube Tee	F516	10.95
1/4" MNPT x 1/4" Tube (White, pressure switch straight fitting)	M011-115	5.74
1/8" FNPT x 1/4" Tube (White, pressure switch elbow fitting)	M011-120	4.84



3/4" Solenoid Valve

Solenoid Valves & Parts

	Part #	List Price
1/2" PVC Solenoid Valve, 120V, no fittings	VAPVC-12	198.90
1/2" PVC Solenoid Valve, 120V, with 3/8" tube fittings	VAPVC-12-38	216.87
1/2" PVC Solenoid Valve, 120V, with 5/8" tube fittings	VAPVC-12-58	221.09
3/4" PVC Solenoid Valve, 120V, no fittings	VAPVC-34	226.66
3/4" PVC Solenoid Valve, 120V, with 5/8" tube fittings	VAPVC-34-5	249.17
1/2" PVC Solenoid Valve Replacement Disaphragm (series 800)	VRPVC-12/34	59.00
Power Cord for SS Solenoid Valve	V011	48.29
110V Coil for SS Solenoid Valve	V010	85.31

All solenoid valves are Viton and come with a power cord unless stated otherwise.



3/8" In-Line Check Valve



In-Line Filter



Sample Valve

Misc. Components

	Part #	List Price
3/8" In-Line Check Valve (for 3/8" flex tube)	M010	45.50
5/8" Rainbow Check Valve (for 5/8" flex tube)	M190	49.85
1/2" Check Valve (for PVC, slip connections)	M150	86.75
3/4" Check Valve (for PVC, slip connections)	M160	98.50
Mounting Panel - Plastic, 22" x 22" (Pre-drilled to mount all components)	M340	117.89
3/8" In-Line Filter w/ 3/8" Tubing Connection	M019	73.75
5/8" In-Line Filter w/ 5/8" Tubing Connection	M019B	74.75
Flow Cell / Injection Point Shutoff Valve (1/4" MNPT x 1/4" FNPT)	M021	51.71
Flow Cell Sample Valve (1/4" MNPT x 3/8" to 5/8" tapered hose barb)	M022	51.85

Tube Size Selection Chart - Maximum GPD

Pump Model	Tube Size #1/HP	Tube Size #2/HP	Tube Size #3	Tube Size #4	Tube Size #5	Tube Size #7/HP
A45M/MP	3 GDP	10 GDP	22 GDP	35 GDP	50 GDP	22 GDP
A85M/MP	5 GDP	17 GDP	40 GDP	60 GDP	85 GDP	40 GDP
A100M/MP	6 GDP	20 GDP	44 GDP	70 GDP	100 GDP	N/A
A170M/MP	10 GDP	34 GDP	80 GDP	120 GDP	170 GDP	N/A

This chart is to be used as reference with complete pumps section on the following two pages.

Complete Pumps

Part #

List Price

Single Head, Adjustable, Low Pressure

45 M Series (50 GPD max) with 1/4" Accessories
 45 M Series (50 GPD max) with 3/8" Accessories
 85 M Series (85 GPD max) with 1/4" Accessories
 85 M Series (85 GPD max) with 3/8" Accessories

A45Mxy14 794.04
 A45Mxy38 839.92
 A85Mxy14 794.04
 A85Mxy38 839.92

Dual Head, Adjustable, Low Pressure

100 DM Series (100 GPD max) with 1/4" Accessories
 100 DM Series (100 GPD max) with 3/8" Accessories
 170 DM Series (170 GPD max) with 1/4" Accessories
 170 DM Series (170 GPD max) with 3/8" Accessories

A100DMxy14 1,099.54
 A100DMxy38 1,191.46
 A170DMxy14 1,099.54
 A170DMxy38 1,191.46

Single Head, Adjustable, High Pressure

3 GPD - #1 Tube - 1/4" Tubing
 3 GPD - #1 Tube - 3/8" Tubing
 5 GPD - #1 Tube - 1/4" Tubing
 5 GPD - #1 Tube - 3/8" Tubing
 10 GPD - #2 Tube - 1/4" Tubing
 10 GPD - #2 Tube - 3/8" Tubing
 17 GPD - #2 Tube - 1/4" Tubing
 17 GPD - #2 Tube - 3/8" Tubing
 22 GPD - #7 Tube - 1/4" Tubing
 22 GPD - #7 Tube - 3/8" Tubing
 40 GPD - #7 Tube - 1/4" Tubing
 40 GPD - #7 Tube - 3/8" Tubing

A45MHP2y14 824.62
 A45MHP2y38 870.50
 A85MHP5y14 824.62
 A85MHP5y38 870.50
 A45MHP10y14 824.62
 A45MHP10y38 870.50
 A85MHP17y14 824.62
 A85MHP17y38 870.50
 A45MHP22y14 824.62
 A45MHP22y38 870.50
 A85MHP40y14 824.62
 A85MHP40y38 870.50

When installing an Aquasol pump outdoors, a rain roof (MP90000) should always be used.

Dual Head, Adjustable, High Pressure (Special Order)

6 GPD - #1 Tube - 1/4" Tubing
 6 GPD - #1 Tube - 3/8" Tubing
 10 GPD - #1 Tube - 1/4" Tubing
 10 GPD - #1 Tube - 3/8" Tubing
 20 GPD - #2 Tube - 1/4" Tubing
 20 GPD - #2 Tube - 3/8" Tubing
 34 GPD - #2 Tube - 1/4" Tubing
 34 GPD - #2 Tube - 3/8" Tubing

A100DMHP5y14 1,160.55
 A100DMHP5y38 1,252.22
 A170DMHP9y14 1,160.55
 A170DMHP9y38 1,252.22
 A100DMHP20y14 1,160.55
 A100DMHP20y38 1,252.22
 A170DMHP34y14 1,160.55
 A170DMHP34y38 1,252.22

Note:

"x" should be replaced with tube size: 1,2,3,4,5,7
 "y" should be replaced with voltage: 1=110V, 2=220V

Note: Stenner-branded pumps are available for a 5% premium.



Single Head Adjustable



Dual Head Adjustable



Dual Head Dual Control

Complete Pumps (con't)

Part

List Price

Single Head, Fixed Rate, Low Pressure

45 MP Series with 1/4" Accessories
 45 MP Series with 3/8" Accessories
 85 MP Series with 1/4" Accessories
 85 MP Series with 3/8" Accessories

A45MPxy14	570.53.
A45MPxy38	616.77
A85MPxy14	570.53
A85MPxy38	616.77

Dual Head, Fixed Rate, Low Pressure

100 DMP Series with 1/4" Accessories
 100 DMP Series with 3/8" Accessories
 170 DMP Series with 1/4" Accessories
 170 DMP Series with 3/8" Accessories

A100DMPxy14	807.55
A100DMPxy38	863.51
A170DMPxy14	807.55
A170DMPxy38	863.51

Single Head, Fixed Rate, High Pressure

3 GPD - #1 Tube - 1/4" Tubing
 3 GPD - #1 Tube - 3/8" Tubing
 5 GPD - #1 Tube - 1/4" Tubing
 5 GPD - #1 Tube - 3/8" Tubing
 10 GPD - #2 Tube - 1/4" Tubing
 10 GPD - #2 Tube - 3/8" Tubing
 17 GPD - #2 Tube - 1/4" Tubing
 17 GPD - #2 Tube - 3/8" Tubing
 22 GPD - #7 Tube - 1/4" Tubing
 22 GPD - #7 Tube - 3/8" Tubing
 40 GPD - #7 Tube - 1/4" Tubing
 40 GPD - #7 Tube - 3/8" Tubing

Note:

"x" should be replaced with tube size: 1,2,3,4,5,7

"y" should be replaced with voltage: 1=110V, 2=220V

A45MPHP2y14	601.44
A45MPHP2y38	647.64
A85MPHP5y14	601.44
A85MPHP5y38	647.64
A45MPHP10y14	601.44
A45MPHP10y38	647.64
A85MPHP17y14	601.44
A85MPHP17y38	647.64
A45MPHP22y14	601.44
A45MPHP22y38	647.64
A85MPHP40y14	601.44
A85MPHP40y38	647.64

Dual Head, Fixed Rate, High Pressure (Special Order)

6 GPD - #1 Tube - 1/4" Tubing
 6 GPD - #1 Tube - 3/8" Tubing
 10 GPD - #1 Tube - 1/4" Tubing
 10 GPD - #1 Tube - 3/8" Tubing
 20 GPD - #2 Tube - 1/4" Tubing
 20 GPD - #2 Tube - 3/8" Tubing
 34 GPD - #2 Tube - 1/4" Tubing
 34 GPD - #2 Tube - 3/8" Tubing

A100DMPHP5y14	832.68
A100DMPHP5y38	925.26
A170DMPHP9y14	832.68
A170DMPHP9y38	925.26
A100DMPHP20y14	832.68
A100DMPHP20y38	925.26
A170DMPHP34y14	832.68
A170DMPHP34y38	925.26

Note: Stenner-branded pumps are available for a 5% premium.

Aquasol Diaphragm/Metering Pumps

Model FCO26 pumps max 26 GPD against 43 psi
 Model FCO70 pumps max 70 GPD against 43 psi

AFCO26	717.36
AFCO70	769.80

Aquasol Diaphragm / Metering Pumps



Aquasol Controllers now stocks our own unique line of solenoid-driven diaphragm pumps which are designed specifically for the pool and spa industry. These reliable pumps are self venting for off-gassing chemicals like chlorine, have solid machined PTFE diaphragms with a 5 year warranty, PVDF heads that are impervious to most chemicals, machined stainless steel solenoid drives, wall-mount enclosures sealed to meet IP65 standards, Viton o-rings, corrosion-resistant double ball check valves, and stroke frequency adjustment. UL Listed and NSF/50 certified. Available with digital pulse input control at no additional charge.

email: sales@aquasol.com
 website: www.aquasol.com

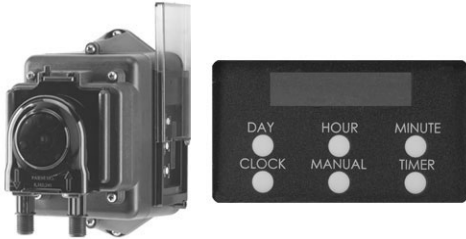
phone: 800-444-0675
 fax: 713-683-6490

STENNER PUMPS®

Stenner Pumps

List Price

The Econ T Series consists of programmable pumps with automatic dosing control for timed applications. This is a compact pump for light duty applications requiring a dosing schedule. In all models, 6 & 10 ft cords available.



Stenner Econ T Series

Econ T Series Programmable Pump

- 1 PSI Models:
 - E10T1A: 2.5 GPD 594.38 -E10T2A: 5.0 GPD 594.38
 - E10T2B: 8.5 GPD 594.38
 - E10T2C: 15.0 GPD 594.38 Econ T Series Programmable Pump
- 2 PSI Models:
 - E10T1F: .66 GPD 606.72
 - E10T2F: 1.3 GPD
 - 6 -E20T4F: 3.4 GPD 606.72
 - E20T4G: 12.3 GPD 606.72
 - E20T4H: 21.7 GPD 606.72

emec

SIMPLE AS WATER

Emec Pumps

List Price



Prisma Dosing Pump

PRISMA is a stepper motor-driven diaphragm dosing pump. Microprocessor-controlled stepper motor ensures an accurate and smooth dosing.

Prisma Dosing Pump

Call for Pricing

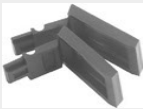
Image Reference

2



Pump Head

8



Latches

6

3

QuickPro Pump Head & Parts

QuickPro Pump Head Cover

- 1-Pack
- 4-Pack

High Pressure QuickPro Pump Head (tube size 1, 2, or 7)

High Pressure QuickPro Pump Head Service Kit (tube size 1, 2, or 7) QuickPro Pump Head (tube size 1, 2, 3, 4, or 5) - 1-Pack - 2-Pack

QuickPro Pump Service Kit (tube size 1, 2, 3, 4, 5, or 7)

QuickPro Tube Housing

- 1-Pack
- 2-Pack

QuickPro Latch Only, 2-Pack

Quick Roller Assembly

- 1-Pack
- 4-Pack

Part #

List Price

QP100-1 50.55

QP100-4 181.98

QP10X-1 235.00

QP10X-K 83.33

QP25X-1 183.53

QP25X-2 348.71

QP25XK 77.83

QP400-1 67.65

QP400-2 128.55

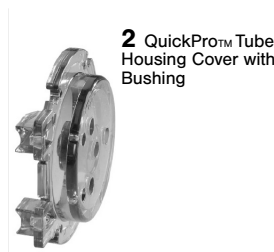
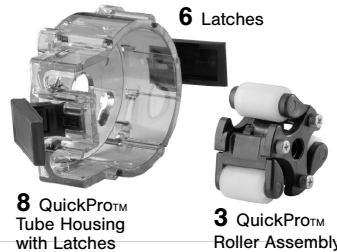
QP401-2 20.95

QP500-1 73.93

QP500-4 266.15

Note:

“x” should be replaced with tube size.



Feed Tube Assemblies

Feed Tube Assembly w/Ends, 2-Pack

Feed Tube Assembly w/Ends, 5-Pack

High Pressure Tubes with Duckbill, 2-Pack

Econ Feed Tubes

-2-Pack (EC30A-2, EC30B-2, EC30C-2, EC30F-2, EC30G-2, EC30H-2) - 5-Pack

(EC30A-5, EC30B-5, EC30C-5, EC30F-5, EC30G-5, EC30H-5)

Part #

List Price

UCCP20X 55.34

MCCP20X 122.34

UCCPFXD 63.46

50.87

120.83

Feed Tube Housing Parts Old Style

Roller Assembly, 1-Pack (Prior to May 2011)

Roller Assembly, 4-Pack (Prior to May 2011)

Standard Roller (Prior to May 2011)

Roller Shaft Bushing (Prior to May 2011)

Cover Screw “B”, 10-Pack

Cover Screw “B”, 24-Pack

Pump Head Service Kit

Part #

List Price

UC3ASYD 73.93

MC3ASYD 258.38

CP33000 5.37

CP31RSB 1.55

UCCPSOB 12.75

MCCPSOB 17.77

PSKL0X 126.16

Complete Feed Rate Assemblies

Single Head Feed Rate Control w/Shaft

Double Head Feed Rate Control w/Shaft

Dual Head Dual Control Feed Rate Control w/Shaft

Part #

List Price

FC5040D 437.43

DM5040D 437.43

DM504DC 437.43

Standard Rollers

Roller Assembly

Feed Rate Control

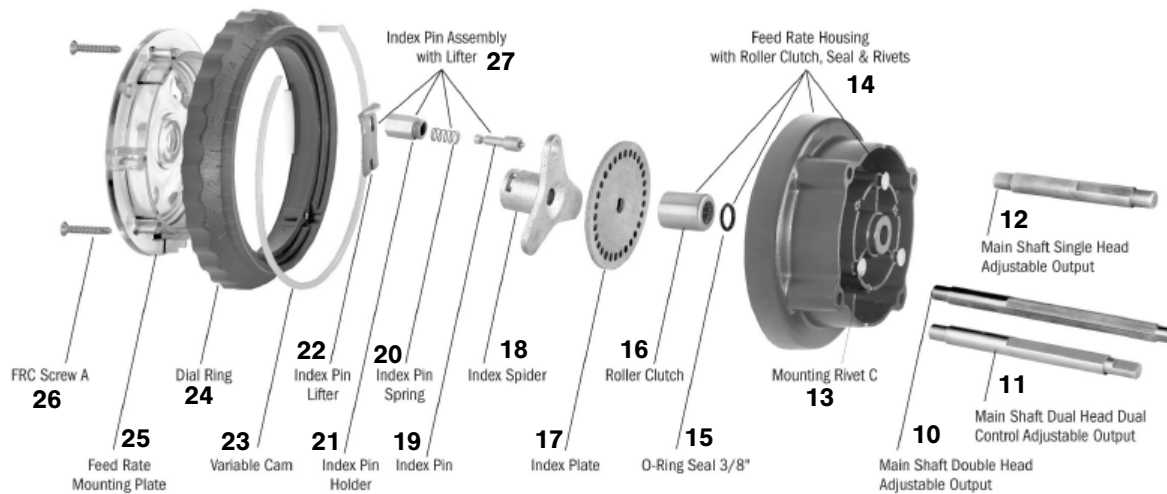


Image Reference Feed Rate Parts



- 26 FRC Screw "A"
- 25 Feed Rate Mounting Plate
- 24 Dial Ring
- 23 Variable Cam, 2-Pack
Variable Cam, 5-Pack
- 27 Index Pin Assembly with Lifter, 19, 20, 21 & 22, 1-Pack
Index Pin Assembly with Lifter, 19, 20, 21 & 22, 2-Pack
- 22 Index Pin Lifter, 2-Pack
Index Pin Lifter, 5-Pack
- 21 Index Pin Holder
- 20 Index Pin Spring
- 19 Index Pin
- 18 Index Spider
- 17 Index Plate, 1-Pack
Index Plate, 5-Pack
- 16 Roller Clutch
- 15 O-Ring Seal 3/8"
- 14 Feed Rate Housing with Roller Clutch, Seal, and Rivets
- 13 Mounting Rivet "C"
- 12 Main Shaft for Single Head-Adjustable Rate, 1-Pack
Main Shaft for Single Head-Adjustable Rate, 2-Pack
- 11 Main Shaft for Double Head-Adjustable Rate
- 10 Main Shaft for Dual Head Dual Control-Adjustable Rate

Part #

List Price

- FCS000A 0.65
- FC5N000 27.81
- FC5M040 27.81
- UCFC5H0 34.99
- MCFC5H0 88.53
- UCFC5AY 104.91
- MCFC5AY 186.43
- UCFC5L1 34.98
- MCFC5L1 84.51
- FC5L003 18.23
- FC5L005 4.18
- FC5L002 63.50
- FC5K00D 62.46
- UCFC5ID 48.71
- MCFC5ID 148.55
- FC5F000 41.31
- FC5E000 4.53
- FC5D00S 131.66
- FCS000C 0.65
- UCFC5AD 72.17
- MCFC5AD 96.17
- DM5A00D 80.28
- DM5A0DC 80.28
- FSK100 78.95

Complete Gear Motor Assemblies for Adjustable Pumps

- Series 45 & 100 - Complete Gear Motor 120v 60Hz PM6041D 477.99
- Series 45 & 100 - Complete Gear Motor 220v 60Hz PM6042D 477.99
- Series 85 & 170 - Complete Gear Motor 120v 60Hz PM6081D 477.99
- Series 85 & 170 - Complete Gear Motor 220v 60Hz PM6082D 477.99

Complete Gear Motor Assemblies for Fixed Rate Pumps

- Series 45MP - Complete Gear Motor 120v 60Hz ME6041D 456.72
- Series 45MP - Complete Gear Motor 220v 60Hz ME6042D 456.72
- Series 85MP - Complete Gear Motor 120v 60Hz ME6081D 456.72
- Series 85MP - Complete Gear Motor 220v 60Hz ME6082D 456.72
- Series 170DMP - Complete Gear Motor 120v 60Hz DM6081D 468.79



Gear Motor Assembly

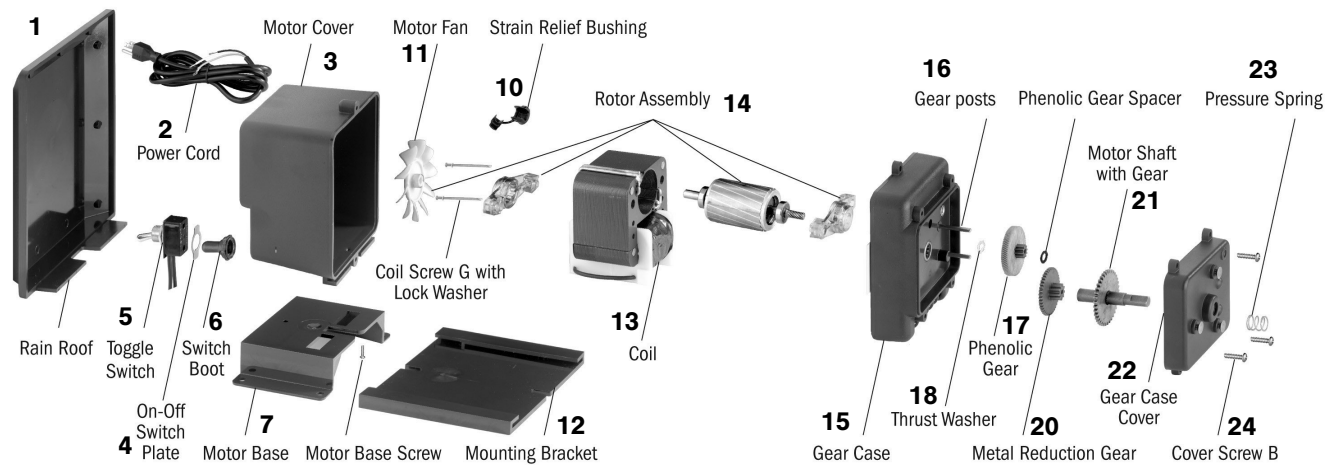


Image Reference

Gear Motor Parts

Part #

List Price

1	Rain Roof	MP90000	30.49
2	Power Cord, 120V	MP6B010	15.72
	Power Cord, 220V	MP6B020	18.61
3	Motor Housing with cord, 120V	PM6A0BL	94.84
	Motor Housing with cord, 220V	PM6A00L	94.84
4	On-Off Switch Plat	MP6D000	2.14
5	Toggle Switch	PM6E000	23.45
6	Switch Boot	MP6C000	14.08
7	Motor Base	MP70000	236.96
10	Strain Relief Bushing	MP6V000	2.20
11	Motor Fan	PM6F000	14.49
12	Mounting Bracket	MP80000	36.96
13	Coil 120v 60Hz	MP6J115	137.94
	Coil 220v 60Hz	MP6J226	137.94
14	Rotor Assembly with Bearings, Brackets & Tolerance Ring	PMBRPL2	144.69
15	Gear Case	PM6K0BL	78.61
16	Gear Post	PM6M000	7.97
17	Phenolic Gear (26RPM - Series 45 & 100)	MP6N040	43.10
	Phenolic Gear (44RPM - Series 85 & 170)	MP6N080	43.10
18	Thrust Washer	MP6P000	2.14
20	Metal Reduction Gear (26RPM - Series 45 & 100)	MP60040	50.34
	Metal Reduction Gear (44RPM - Series 85 & 170)	MP60080	50.34
21	Motor Shaft with Gear (Adjustable Rate Models)	MP6Q00D	44.74
	Motor Shaft with Gear (Single Head-Fixed Rate Models)	ME6Q0LD	55.56
	Motor Shaft with Gear (Double Head-Fixed Rate Models)	DM6Q0LD	85.86
22	Gear Case Cover	PM6R0BL	78.61
23	Pressure Spring	MP6T000	2.14
24	Cover Screw "B", 10-Pack	UCCPSOB	12.75
	Cover Screw "B", 24-Pack	MCCPSOB	17.77
	Motor Service Kit 120v	MSK120	234.60
	Motor Service Kit 220v	MSK220	234.60
	Gearcase Service Kit	GSK45A	153.77
	Gearcase Service Kit	GSK85A	153.77

email: sales@aquasol.com
website: www.aquasol.com

phone: 800-444-0675
fax: 713-683-6490

Miscellaneous Stenner Parts



Connecting Nut



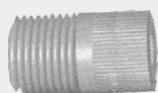
Injection Fitting



Ceramic Weight



Injection Check Valve



3/8" Lead Tube Adapter

Connecting Nut 1/4", 10-Pack
Connecting Nut 1/4", 24-Pack
Ferrule 1/4", 10-Pack
Ferrule 1/4", 24-Pack
Injection Fitting w/Nut & Ferrule 1/4", 1-Pack
Injection Fitting w/Nut & Ferrule 1/4", 5-Pack
Injection Fitting w/Nut-3/8", 1-Pack
Injection Fitting w/Nut-3/8", 5-Pack
Ceramic Weight w/1/4" Clip, 1-Pack
Ceramic Weight w/1/4" Clip, 5-Pack
Ceramic Weight w/3/8" Clip, 1-Pack
Ceramic Weight w/3/8" Clip, 5-Pack
Flow Indicator, 1/4"
Flow Indicator, 3/8"
Suction Line Strainer 1/4"
Suction Line Strainer 3/8"
Grease
Injection Check Valve 1/4", 1-Pack
Injection Check Valve 1/4", 5-Pack
Injection Check Valve 3/8", 1-Pack
Injection Check Valve 3/8", 5-Pack
Check Valve Duckbill only, 2-Pack
Check Valve Duckbill only, 5-Pack
Connecting Nut 3/8" with Lead Tube Adapter, 2-Pack
Connecting Nut 3/8" with Lead Tube Adapter, 5-Pack
Injection Fitting Only 1/4"
Injection Fitting Only 3/8"
Check Valve O-Ring

Part #	List Price
UCAK100	29.85
MCAK100	59.70
UCAK200	13.44
MCAK200	26.88
UCAK300	19.85
MCAK300	79.40
UCAK400	23.71
MCAK400	94.84
UCCW1400	27.95
MCCW1400	111.80
UCMAC38	28.95
MCMAC38	115.80
AK600	53.60
AK700	53.60
ST114	42.01
ST138	42.01
MAGRE55	98.43
UCDBINJ	34.31
MCDBINJ	137.24
UCINJ38	42.43
MCINJ38	169.72
UCCVDB0	18.22
MCCVDB0	36.44
UCADPTR	21.80
MCADPTR	43.60
CVIJ1/4	12.90
CVIJ3/8	12.90
CVIJOR	12.24

Chemical Tanks

Part

List Price



5 Gallon Carboy

5 Gallon Carboy w/ Cap (Polyethylene, natural)	T705	68.82
15 Gallon Drum (Polyethylene, natural)	T715	132.04
30 Gallon Drum (Polyethylene, natural)	T730	210.79
55 Gallon Drum (Polyethylene, natural)	T755	218.14
175 Gallon Tank w/lid (Polyethylene, Yellow)	T175	855.00
Insert for 175 Gallon Tank (Polyethylene, Yellow)	T175-Insert	585.00
Float Gauge for 175 Gallon Tank & Insert	T175-Gauge	290.85

Note: Tanks different from sizes listed are available by special order only.

Aquasol Bleach Storage Tank



Aquasol's Bleach Storage Tank for commercial pool facilities can store 3x the amount of bleach as a 55 gallon drum in the same space. A tank insert can be added if regulations require spill containment. The tapered design allows tanks to be stacked to save on shipping costs. High density polyethylene 1.9 S.G.

Tank Insert (140 gallon capacity)

- Fits inside tank
- Meets spill containment regulations
- Insert will not float
- Tapered for stackability
- 23" dia. x 65" h; 66 lbs.

Bleach Storage Tank (175 gallon capacity)

- Same footprint as 55 gallon drum
- Removable lock-down lid
- 8" vented fill cap
- Yellow color; UV inhibited
- Tapered for stackability
- 26" dia. x 72" h; 75 lbs.

STS Tank Series

Part

List Price

The STS Tank Series are self-contained systems designed to store and feed liquid chemicals. Unit consists of a polyethylene tank, Aquasol/Stenner feed pump, rain roof, and spill recovery system. This chemical feed system can be positioned, connected, filled and started in a matter of minutes.

Tank w/A45M or A85M Variable Pump, 1/4" Tubing & Accessories

- 7.5 Gallons	STS7.5zA45(85)Mx114	894.88
- 15 Gallons	STS15zA45(85)Mx114	1,152.33
- 30 Gallons	STS30zA45(85)Mx114	1,267.12

Tank w/A45MHP or A85MHP Variable Pump, 1/4" Tubing & Accessories

-7.5 Gallons	STS7.5zA45(85)MHPx114	1,116.10
-15 Gallons	STS15zA45(85)MHPx114	1,251.73
-30 Gallons	STS30zA45(85)MHPx114	1,518.84

All options above are also available with 3/8" tubing & accessories. Call for pricing. To substitute fixed rate pump, subtract \$100.00 per system

Tank only, Natural or Gray

-7.5 Gallons	STS7.5z	371.80
-15 Gallons	STS15z	433.34
-30 Gallons	STS30z	664.03

The "z"s must be replaced with tank color: GC = gray, NC = natural.

email: sales@aquasol.com
website: www.aquasol.com

phone: 800-444-0675
fax: 713-683-6490

SpinTouch: Avant-Garde Water Testing

The WaterLink SpinTouch system is a one-touch, comprehensive water chemistry testing device.

This SpinTouch is intuitive and requires minimal operator training. With a single water sample, the SpinTouch will give the exact chemical readings for your pool at the push of a button.

Certified to NSF/ANSI 50



SpinTouch Disk Chart

SpinTouch Water Testing Equipment

Part

List Price



10-Test Spin Disk Series

WaterLink SpinTouch

-Model 3581

570-300

1,243.00

-Model 3582

570-310

2,043.58

SpinTouch Testing Disks (50-pack)

-Spin Disk #4328-H 103 Series

570-301

195.00

-Spin Disk #4334-H 501 Series

570-302

195.00

-Spin Disk #4335-H Series

570-306

195.00

-Spin Disk #4329-H

570-307

195.00



3-Test Spin Disk Series

LaMotte Syringe for SpinLabs, 1189-3 (3-pack)

570-305

19.95

There is no preset discount for SpinTouch Water Testing Equipment. Call for availability and volume discount opportunities.

Misc Field Service Equipment

Part

List Price

LCD Display ORP Meter

M020

353.23

-for electrode testing

TDS Meter

M040

189.14

Calibration Tool

M025

8.22

-for adjustment of calibration screws on circuit board

Tap & Drill Bit for Installation

M026

115.00

-Tap = 1/4" NPT, Bit = 7/16", Shaft = 3/8"

Index

Dealer Discount Information	1	Complete Pumps Stenner	8-9
Aquasol System Packages	2	and Emec Pumps	10
The AUI	3	Pump Parts	11
Aquasol Chemical Controllers	4	Feed Tube Assemblies	11
Chemical Controller Parts	4	Feed Rate Assemblies and Parts Gear	11-12
Electrodes	5	Motor Assemblies	12
Erosion Feeders	5	Gear Motor Parts	13
Tubing	5	Miscellaneous Stenner Parts	14
Flow Cell Parts	5	CO2 Systems and Components	14
Safety Pressure Switch	5	Chemical Tanks	15
Fittings	6	STS Tanks	15
Solenoid Valves and Parts	7 7	SpinTouch Water Testing Equipment	16
Miscellaneous Components		Miscellaneous Field Service Equipment	16

Regular Hours

Monday - Friday
8:00 AM - 5:00 PM CST

Shipments / Returns / Repairs

All orders are shipped F.O.B. UPS or FedEx per ordering instructions. We will ship to you as fast as needed, F.O.B. Houston. We encourage our customers to check their shipments as soon as they are received to make sure everything arrived. All damaged items must be noted on the delivery receipt. All shortages and damages must be called into Aquasol Controllers within 48 hours of receipt, 1-800-444-0675. Aquasol Controllers offers a 30- day return policy (60 days on controllers). **To return merchandise at any time, you must call Aquasol at 1-800-444-0675 for a Return Goods Authorization number (RGA).** At our discretion, we may still authorize the return after 30 days (60 for controllers), and a 35% re-stocking fee may be applied. Include a copy of your invoice or packing slip with your return including the RGA number. We make every attempt to repair shipments the same day they are received. All non-warranty repairs are subject to a minimum one hour labor charge.

Limited Warranty

We reserve the right to repair or replace all defective parts. Aquasol Controllers is not responsible for any removal or installation costs. Any tampering with major components, chemical damage, faulty wiring, weather conditions, power surges, or products not used with reasonable care and maintained in accordance with the instructions packed with each product will void the warranties. We make no other warranty expressed or implied. Call for an RGA number.

Warranties on Core Items

Aquasol Controllers	1 year warranty on the controller. 5 year Warranty on the main circuit module.
Electrodes	1 year warranty. (Does not include electrodes damaged from misuse/abuse)
Aquasol Diaphragm/Metering Pumps	1 year material & workmanship. 5 years Warranty on Diaphragm.
Aquasol/Stenner Metering Pump	1 year material & workmanship. (Does not include feed tubes)
Pressure Switch	90 day warranty.
Solenoid Valve	90 day warranty.
Rainbow Feeders	1 year warranty.

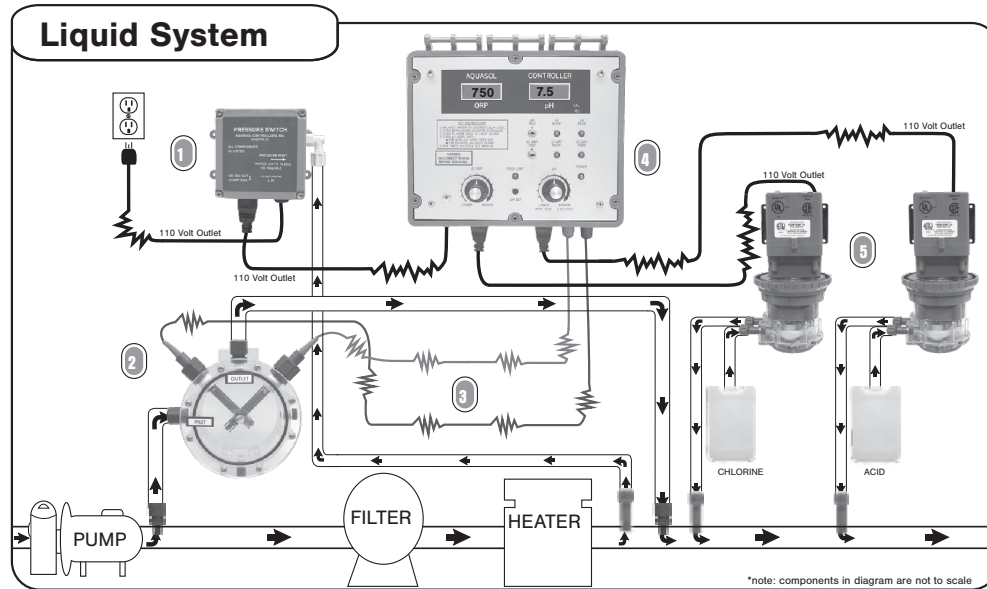
Credit / Pricing

Major Credit Cards Accepted • Net 30 days subject to credit approval.
Pricing may be subject to change at the time of order without prior notice.

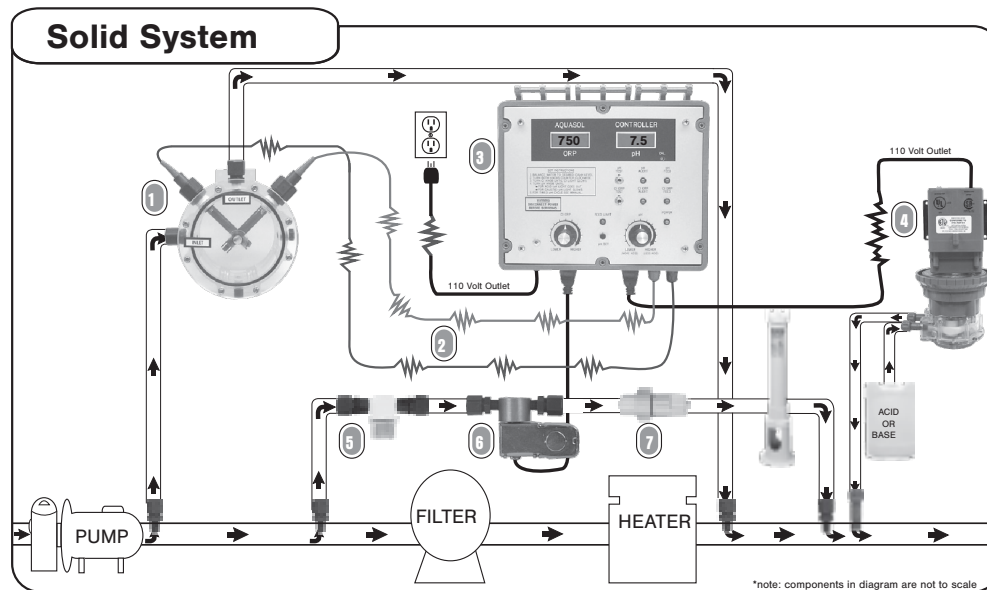
email: sales@aquasol.com
website: www.aquasol.com

phone: 800-444-0675
fax: 713-683-6490

Aquasol System Packages



- 1 The safety pressure switch verifies that the circulation system is operational before it allows the system to inject chemicals. This is required with a liquid system.
- 2 The sample flow cell, which is required, provides the probes with a turbulence, velocity, and debris-free area to test the water.
- 3 As the probes test the water, the chemical readings are continuously transmitted to the controller.
- 4 The controller interprets the chemical readings from the probes and activates the chemical pumps as needed.
- 5 The chemical pumps inject chlorine or acid as they are activated by the controller.

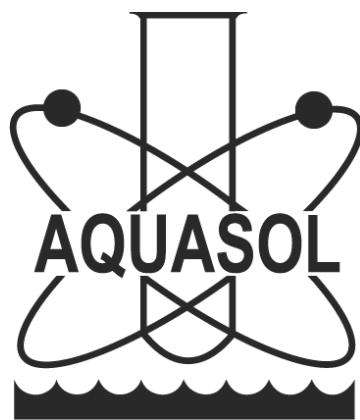


- 1 The sample flow cell, which is required, provides the probes with a turbulence, velocity, and debris-free area to test the water.
- 2 As the probes test the water, the chemical readings are continuously transmitted to the controller.
- 3 The controller interprets the chemical readings from the probes and activates the chemical feeders as needed.
- 4 The acid or base pump injects acid or base as it is activated by the controller.
- 5 The in-line filter helps to keep the solenoid valve clean.
- 6 The solenoid valve controls the flow of water through the chlorinator. It remains closed until activated by the controller.
- 7 The check valve prevents highly chlorinated water from backing up from the chlorinator and damaging the solenoid valve when it is closed.

Note: Each system can be used with any controller. The controller pictured is only an example.

Aquasol Controllers, Inc.

We Simply Control Pools. Since 1975.



CONTACT US

P: 800-444-0675

F: 713-683-6490

E: sales@aquasol.com

MONDAY - FRIDAY

8:00 AM - 5:00 PM

www.aquasol.com