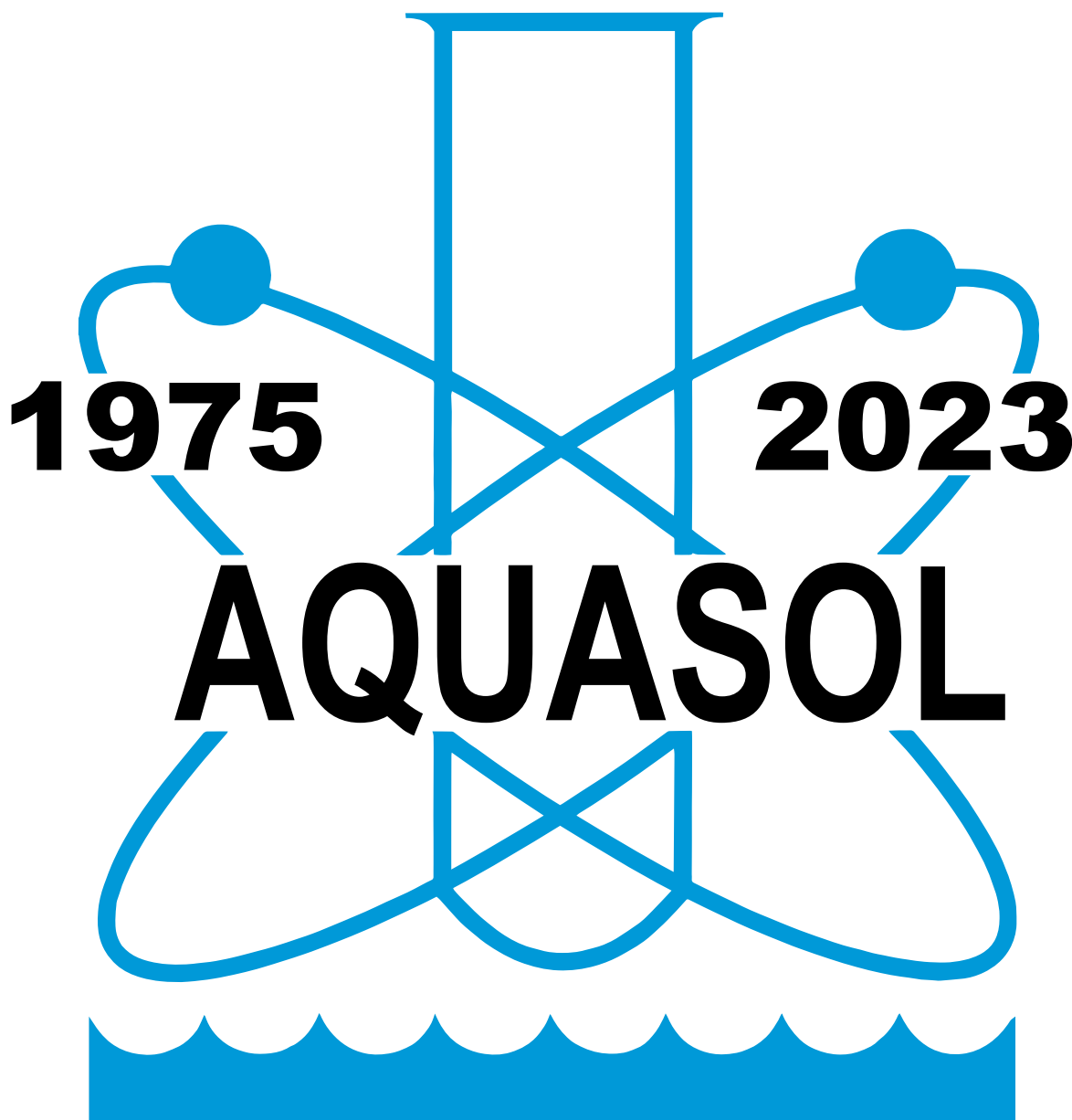


Aquasol Controllers, Inc.



48 YEARS OF RELIABILITY & SERVICE

www.aquasol.com

We Simply Control Pools. Since 1975.

1-800-444-0675

2023 Price Guide

48 YEARS OF AQUASOL CONTROLLERS!

Dear Valued Customer,

Aquasol Controllers is the industry leader in chemical automation equipment for pools and spas. We are proud to have developed a truly wireless alert system that connects your chemical controller to your mobile device, allowing for real-time alerts to be sent directly to pool operators and other stakeholders.

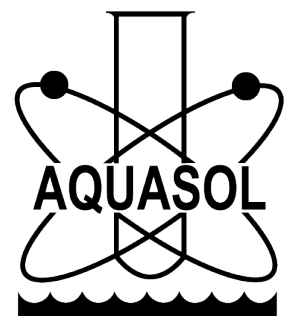
As we head into a new year, we aim to continue developing solutions like this to keep pushing the limits of chemical automation. Thank you for trusting us to provide the highest quality of chemical automation and pool equipment.

With gratitude,
The Aquasol Team

CONTACT US

P: 800-444-0675
F: 713-683-6490
E: SALES@AQUASOL.COM

MONDAY - FRIDAY
8:00 AM - 5:00 PM



Product Discount Categories for Aquasol Dealers

Products listed within this price guide fall into one of three categories. Each category has a different maximum dealer discount from the listed price. Please contact us with any questions

Your Aquasol Dealer Discount

CATEGORY 1	CATEGORY 2	CATEGORY 3

Product	Category	Pages
System Packages	1	2
Controllers	1	3
Controller Parts	3	3
Preventative Maintenance Service	N/A	3
Electrode Components		
Electrodes	2	4
Electrode Fitting	3	4
Cable Extensions	3	4
Erosion Feeders		
Stand-alone Feeder	3	4
Feeder Parts	3	4
Tubing, All	3	4
Flow Cell		
Flow Cell Complete	2	4
Flow Cell Parts, All	3	4
Safety Pressure Switch	2	4
Fittings, All	3	5
Solenoid Valves, Complete & Parts	3	6
Miscellaneous:		
Valves, Flow Meter, In-Line Filters	3	6
Mounting Panel	3	6
Field Service Equipment	3	
Chemical Feed Pumps	2	7-9
Pump Parts / Accessories	3	10-12
Chemical Tanks, All	3	14
STS Tank Series	2	14
SpinTouch Water Testing Equipment	N/A	15

Featuring the XPC Controller - Now with WiFi / Ethernet Communications!



- ORP/pH control
- Integrated pressure switch
- Optional flow switch
- True proportional feeding with pulse input pumps
- Tank level monitoring
- TO rate calculation/display
- Flow totalizer
- IP65/NEMA 4X enclosure
- Online access for data monitoring
- Cloud data backup
- WiFi/Ethernet alerts

Aquasol System Packages



Liquid System Package

Aquasol System Packages are our all-inclusive solution to chemical automation. Each board will include a chemical controller, electrodes, flow cell, pumps, and all other relevant components. The comprehensive lists for the solid and liquid systems are below.

Each system can be used with any controller. The controller pictured is only an example.



Solid System Package

Liquid System Package

- Controller:

- XPC
- XPC with communications
- WTC
- SPC

Part

SYSTEM-LX
SYSTEM-LXWIFI
SYSTEM-LW
SYSTEM-LS

List Price

\$4,352.00
\$5,274.50
\$3,382.50
\$3,025.00

- Electrodes

---included---

- Flow cell

---included---

- Chlorine feed pump (A85MP or A45MP)

---included---

Optional: Upgrade to variable speed pump

+\$200.00

- Acid feed pump (A45MP)

---included---

Optional: Upgrade to variable speed pump

+\$200.00

- Safety pressure switch

---included---

- Mounting panel, tubings, and fitting

---included---

Solid System Package

- Controller:

- XPC
- WTC
- SPC

Part

SYSTEM-SX
SYSTEM-SW
SYSTEM-SS

List Price

\$4,275.00
\$3,382.50
\$3,052.50

- Electrodes

---included---

- Flow cell

---included---

- 300-29X Rainbow feeder

---included---

(with 1/2" solenoid valve, 5/8" check valve, & 5/8" screen filter)

- pH feed pump* (A45MP)

---included---

Optional: Upgrade to variable speed pump

+\$200.00

- Mounting panel, tubings, and fitting

---included---

Components of Aquasol's System Packages can be purchased individually. Please refer to the table of contents for a complete list of parts that we offer.

Aquasol Controllers Agency Listings

Aquasol offers three types of controllers for commercial pool automation. We recommend purchasing them as part of a system package, but they can be purchased separately. The SPC and WTC are Intertek/ETL listed to UL standards, and the XPC is UL listed. All Aquasol Controllers are tested and listed to ANSI/NSF Std. 50



Aquasol Chemical Controllers

Part # List Price



XPC Controller

Aquasol XPC
 - controls sanitizer and pH
 - includes safety pressure switch

XPC Complete 4,024.75

Aquasol XPC with communications
 - controls sanitizer and pH
 - includes safety pressure switch

XPC-Wifi-Comple 5,148.50



SPC Controller

Aquasol SPC*
 - controls sanitizer and pH

SPC Complete 2,062.50

Aquasol WTC*
 - controls sanitizer and pH
 - dual digital displays

WTC Complete 2,392.50



WTC Controller

Aquasol Individual ORP
 - controls sanitizer only

IND-ORP 1,635.00

Aquasol Individual pH
 - controls pH only

IND-pH 1,635.00

Preventative Maintenance
 - diagnostics, calibration, BNCs, and relays

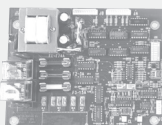
PM01 (no discount) 175.00

* 110V standard; 220V available.

All controllers include a sample flow cell, electrodes, and fittings.

Chemical Controller Parts

Part # List Price



Circuit Board

1/4 Amp Fuse (Slo-Blo)	W342	2.30
3 Amp Fuse (Slo-Blo)	W343	2.30
15 Amp Fuse (Slo-Blo)	W344	2.30
3 Amp Fuse for XPC	X043	2.85
8 Amp Fuse for XPC	X044	2.85
Face Plate- Complete SPC	S360	475.25
Face Plate - Complete WTC	W360	785.75
Display Meters for WTC Face Plate	W061	324.00
Circuit Board - Red	S040R-ELT/NSF	621.75
Relay Model C	W341	168.50
Face Panel Knob	S065	7.95
Power Cord	W392	230.35
110 VAC Receptacle	W393	34.50
BNC	S094	15.75
Teflon Tape	S103	1.95
Circuit Board (IND-pH or IND-ORP)	I040	330.00
Face Panel (IND-pH or IND-ORP)	I060	330.00
Owner's Manual	S104	8.75

email: sales@aquasol.com
website: www.aquasol.com

phone: 800-444-0675
fax: 713-683-6490



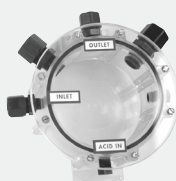
Electrode



Rainbow 300-29 Feeder



Tubing



Flow Cell Complete

Electrodes

ORP Electrode (10 ft cable with BNC)
pH Electrode (10 ft cable with BNC)
Grounding Electrode
Electrode Fitting
Cable Extensions (25 ft)

Part

S010
S020
S005
F220
S028-25

List Price

195.00
175.00
77.00
7.55
95.75

Erosion Feeders

Pentair-Rainbow 300-29X (5/8" flex tubing)
Pentair-Rainbow HC-3330 Feeder
Pentair-Rainbow HC-3340 Feeder

Part

R100
R200
R300

List Price

383.75
507.75
535.00

Tubing

Tubing 1/4" OD Black HDPE
Tubing 1/4" OD Natural HDPE
Tubing 3/8" OD Black HDPE
Tubing 3/8" OD Natural HDPE

Part

M015B
M015N
M016B
M016N

List Price

0.37 / ft
0.40 / ft
0.57 / ft
0.72 / ft

Other tubing colors available. Call for pricing.

Flow Cell Parts

Flow Cell Complete (includes fittings)
Flow Cell Fitting Package (original fittings)
Flow Cell Center (flow cell main bod , no face)
Flow Cell Face Plate
Flow Cell O-Ring & Screw Kit (8 screws)
Flow Cell / Injection Point Shutoff alve
(1/4" MNPT x 1/4" FNPT)
Flow Cell Sample Valve
(1/4" MNPT x 3/8" to 5/8" tapered hose barb)

Part

S030
S030FP
S031
S032
S036A
M021

List Price

190.80
43.25
100.95
31.95
14.95
49.25

M022

49.25

Safety Pressure Switch

Safety Pressure Switch (0-6 psi)
- for pool equipment installed above pool level
Safety Pressure Switch (2-22 psi)
- for pool equipment installed below pool level

Part

M011
M011-HP

List Price

210.00
237.50

A safety pressure switch is a REQUIRED component of a liquid chlorine system.

Safety First: The Aquasol Pressure Switch



Why do we need the safety pressure switch?

The safety pressure switch eliminates the possibility of injecting chlorine and/or acid in the return line of the pool when there is no water flow. This can happen if the circulation pump is not operational or if the filter is in backwash

How does it work?

The chemical feeders are plugged into the Aquasol Controller, the controller is plugged in the safety pressure switch, and the safety pressure switch is plugged into a 120VAC power receptacle. The safety pressure switch is plumbed into the return line to the pool (see system diagrams on inside back cover). The pressure switch is internally adjusted to turn on when there is adequate pressure in the line and turn off when there is a loss of pressure. No manual reset is required

Note: The Safety Pressure Switch is only one layer of protection, and swimmers should never be allowed in the pool when the circulation system is off or down. Please visit <http://www.poolinterlocksafety.com/> for more details.

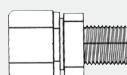
Fittings

Part

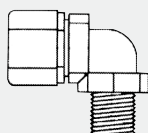
List Price



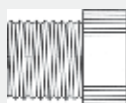
Female
Connector



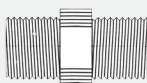
Male
Connector



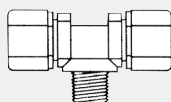
Male Elbow



Plug



Hex Pipe Nipple



Male Branch Tee

1/4" FNPT x 1/4" Tube Female Connector	F010	6.41
1/4" FNPT x 3/8" Tube Female Connector	F011	6.77
3/8" FNPT x 3/8" Tube Female Connector	F012	8.28
1/2" FNPT x 3/8" Tube Female Connector	F016	11.28
1/2" FNPT x 5/8" Tube Female Connector	F017	8.28
1/8" MNPT x 3/8" Tube Male Connector	F225	4.37
1/4" MNPT x 1/4" Tube Male Connector	F200	3.86
1/4" MNPT x 3/8" Tube Male Connector (Flow Cell Inlet/Outlet)	F230	5.37
1/4" MNPT x 1/2" Tube Male Connector	F227	5.39
1/4" MNPT x 5/8" Tube Male Connector	F446	7.74
3/8" MNPT x 3/8" Tube Male Connector	F210	4.44
3/8" MNPT x 1/2" Tube Male Connector	F240	6.46
1/2" MNPT x 3/8" Tube Male Connector	F215	6.49
1/2" MNPT x 1/2" Tube Male Connector (Electrode Fitting)	F220	7.55
1/2" MNPT x 1/2" Tube Male Connector (Non Electrode Fitting)	F222	8.87
1/2" MNPT x 5/8" Tube Male Connector	F250	8.41
3/4" MNPT x 5/8" Tube Male Connector	F255	8.33
3/4" MNPT x 3/8" Tube Male Connector	F260	8.28
1/4" MNPT x 1/4" Tube Male Elbow	F300	4.83
1/4" MNPT x 3/8" Tube Male Elbow	F330	8.14
3/8" MNPT x 1/4" Tube Male Elbow	F305	7.10
3/8" MNPT x 3/8" Tube Male Elbow	F310	6.76
1/2" MNPT x 3/8" Tube Male Elbow	F340	8.02
1/2" MNPT x 1/2" Tube Male Elbow	F320	8.28
1/2" MNPT x 5/8" Tube Male Elbow	F270	8.28
1/4" x 1/4" Tube Union	F400	6.98
3/8" x 1/4" Tube Union	F430	10.41
3/8" x 3/8" Tube Union	F410	7.44
3/8" x 1/2" Tube Union	F440	8.64
1/2" x 1/2" Tube Union	F420	8.73
5/8" x 3/8" Tube Union	F445	7.72
3/8" to 1/4" Tube Union	F512	4.15
1/8" MNPT Plug	F600	4.91
1/4" MNPT Plug (Flow cell plugs)	F610	1.54
3/8" MNPT Plug	F620	1.60
1/2" MNPT Plug	F630	1.76
3/4" MNPT Plug	F640	2.19
1/4" x 1/8" MNPT Hex Pipe Nipple	F695	1.53
1/4" x 1/4" MNPT Hex Pipe Nipple	F700	1.63
1/4" x 3/8" MNPT Hex Pipe Nipple	F730	4.11
3/8" x 3/8" MNPT Hex Pipe Nipple	F710	4.11
3/4" x 3/4" MNPT Hex Pipe Nipple	F750	10.55
1/4" NPT x 1/4" Tube Male Branch Tee	F800	8.31
1/4" NPT x 3/8" Tube Male Branch Tee	F810	9.14
3/8" NPT x 3/8" Tube Male Branch Tee	F820	11.10
1/4" Tube Tee	F500	10.41
3/8" Tube Tee	F510	10.58
3/8" x 3/8" White Tube Tee	F515	7.61
3/8" x 1/4" White Tube Tee	F516	10.43
1/4" MNPT x 1/4" Tube (White, pressure switch straight fitting)	M011-115	5.47
1/8" FNPT x 1/4" Tube (White, pressure switch elbow fitting)	M011-120	4.61



3/4" Solenoid Valve

Solenoid Valves & Parts

1/2" PVC Solenoid Valve, 120V, no fitting
 1/2" PVC Solenoid Valve, 120V, with 3/8" tube fitting
 1/2" PVC Solenoid Valve, 120V, with 5/8" tube fitting
 3/4" PVC Solenoid Valve, 120V, no fitting
 3/4" PVC Solenoid Valve, 120V, with 5/8" tube fitting
 1/2" and 3/4" PVC Solenoid Valve
 Replacement Diaphragm (series 800)
 Power Cord for SS Solenoid Valve
 110V Coil for SS Solenoid Valve

Part

VAPVC-12
 VAPVC-12-38
 VAPVC-12-58
 VAPVC-34
 VAPVC-34-58
 VRPVC-12/34
 V011
 V010

List Price

184.17
 197.15
 200.99
 209.87
 226.52
 54.63
 45.99
 81.25

All solenoid valves are Viton and come with a power cord unless stated otherwise.



3/8" In-Line Check Valve



In-Line Filter



Sample Valve

Misc. Components

3/8" In-Line Check Valve (for 3/8" flex tube)
 5/8" Rainbow Check Valve (for 5/8" flex tube)
 1/2" Check Valve (for PVC, slip connections)
 3/4" Check Valve (for PVC, slip connections)
 Mounting Panel - Plastic, 22" x 22"
 (Pre-drilled to mount all components)
 3/8" In-Line Filter w/ 3/8" Tubing Connection
 5/8" In-Line Filter w/ 5/8" Tubing Connection
 Flow Cell / Injection Point Shuto Valve
 (1/4" MNPT x 1/4" FNPT)
 Flow Cell Sample Valve
 (1/4" MNPT x 3/8" to 5/8" tapered hose barb)

Part

M010
 M190
 M150
 M160
 M340
 M019
 M019B
 M021
 M022

List Price

43.32
 47.44
 82.63
 93.69
 112.28
 69.36
 63.36
 49.25
 49.34

Tube Size Selection Chart - Maximum GPD

Pump Model	Tube Size #1/HP	Tube Size #2/HP	Tube Size #3	Tube Size #4	Tube Size #5	Tube Size #7/HP
A45M/MP	3 GDP	10 GDP	22 GDP	35 GDP	50 GDP	22 GDP
A85M/MP	5 GDP	17 GDP	40 GDP	60 GDP	85 GDP	40 GDP
A100M/MP	6 GDP	20 GDP	44 GDP	70 GDP	100 GDP	N/A
A170M/MP	10 GDP	34 GDP	80 GDP	120 GDP	170 GDP	N/A

This chart is to be used as reference with complete pumps section on the following two pages.

Complete Pumps

Part

List Price



Single Head
Adjustable



Dual Head
Adjustable



Dual Head
Dual Control

Single Head, Adjustable, Low Pressure

45 M Series (50 GPD max) with 1/4" Accessories	A45Mxy14	734.20
45 M Series (50 GPD max) with 3/8" Accessories	A45Mxy38	776.62
85 M Series (85 GPD max) with 1/4" Accessories	A85Mxy14	734.20
85 M Series (85 GPD max) with 3/8" Accessories	A85Mxy38	776.62

Dual Head, Adjustable, Low Pressure

100 DM Series (100 GPD max) with 1/4" Accessories	A100DMxy14	1,016.68
100 DM Series (100 GPD max) with 3/8" Accessories	A100DMxy38	1,101.68
170 DM Series (170 GPD max) with 1/4" Accessories	A170DMxy14	1,016.68
170 DM Series (170 GPD max) with 3/8" Accessories	A170DMxy38	1,101.68

Single Head, Adjustable, High Pressure

3 GPD - #1 Tube - 1/4" Tubing	A45MHP2y14	762.47
3 GPD - #1 Tube - 3/8" Tubing	A45MHP2y38	804.91
5 GPD - #1 Tube - 1/4" Tubing	A85MHP5y14	762.47
5 GPD - #1 Tube - 3/8" Tubing	A85MHP5y38	804.91
10 GPD - #2 Tube - 1/4" Tubing	A45MHP10y14	762.47
10 GPD - #2 Tube - 3/8" Tubing	A45MHP10y38	804.91
17 GPD - #2 Tube - 1/4" Tubing	A85MHP17y14	762.47
17 GPD - #2 Tube - 3/8" Tubing	A85MHP17y38	804.91
22 GPD - #7 Tube - 1/4" Tubing	A45MHP22y14	762.47
22 GPD - #7 Tube - 3/8" Tubing	A45MHP22y38	804.91
40 GPD - #7 Tube - 1/4" Tubing	A85MHP40y14	762.47
40 GPD - #7 Tube - 3/8" Tubing	A85MHP40y38	804.91

**When installing
an Aquasol pump
outdoors, a rain roof
(MP90000) should
always be used.**

Dual Head, Adjustable, High Pressure

6 GPD - #1 Tube - 1/4" Tubing	A100DMHP5y14	1,106.39
6 GPD - #1 Tube - 3/8" Tubing	A100DMHP5y38	1,157.85
10 GPD - #1 Tube - 1/4" Tubing	A170DMHP9y14	1,106.39
10 GPD - #1 Tube - 3/8" Tubing	A170DMHP9y38	1,157.85
20 GPD - #2 Tube - 1/4" Tubing	A100DMHP20y14	1,106.39
20 GPD - #2 Tube - 3/8" Tubing	A100DMHP20y38	1,157.85
34 GPD - #2 Tube - 1/4" Tubing	A170DMHP34y14	1,106.39
34 GPD - #2 Tube - 3/8" Tubing	A170DMHP34y38	1,157.85

Note:

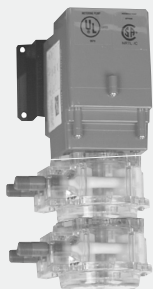
"x" should be replaced with tube size: 1,2,3,4,5,7

"y" should be replaced with voltage: 1=110V, 2=220V

Note: Stenner-branded pumps are available for a 5% premium.



Single Head
Fixed Rate



Dual Head
Fixed Rate

Complete Pumps (con't)

Single Head, Fixed Rate, Low Pressure

45 MP Series with 1/4" Accessories
45 MP Series with 3/8" Accessories
85 MP Series with 1/4" Accessories
85 MP Series with 3/8" Accessories

Part #	List Price
A45MPxy14	527.53
A45MPxy38	570.30
A85MPxy14	527.53
A85MPxy38	570.30

Dual Head, Fixed Rate, Low Pressure

100 DMP Series with 1/4" Accessories
100 DMP Series with 3/8" Accessories
170 DMP Series with 1/4" Accessories
170 DMP Series with 3/8" Accessories

A100DMPxy14	746.69
A100DMPxy38	843.93
A170DMPxy14	746.69
A170DMPxy38	843.93

Single Head, Fixed Rate, High Pressure

3 GPD - #1 Tube - 1/4" Tubing
3 GPD - #1 Tube - 3/8" Tubing
5 GPD - #1 Tube - 1/4" Tubing
5 GPD - #1 Tube - 3/8" Tubing
10 GPD - #2 Tube - 1/4" Tubing
10 GPD - #2 Tube - 3/8" Tubing
17 GPD - #2 Tube - 1/4" Tubing
17 GPD - #2 Tube - 3/8" Tubing
22 GPD - #7 Tube - 1/4" Tubing
22 GPD - #7 Tube - 3/8" Tubing
40 GPD - #7 Tube - 1/4" Tubing
40 GPD - #7 Tube - 3/8" Tubing

Note:

"x" should be
replaced with tube
size: 1,2,3,4,5,7

"y" should be
replaced with voltage:
1=110V, 2=220V

A45MPHP2y14	556.11
A45MPHP2y38	598.85
A85MPHP5y14	556.11
A85MPHP5y38	598.85
A45MPHP10y14	556.11
A45MPHP10y38	598.85
A85MPHP17y14	556.11
A85MPHP17y38	598.85
A45MPHP22y14	556.11
A45MPHP22y38	598.85
A85MPHP40y14	556.11
A85MPHP40y38	598.85

Dual Head, Fixed Rate, High Pressure

6 GPD - #1 Tube - 1/4" Tubing
6 GPD - #1 Tube - 3/8" Tubing
10 GPD - #1 Tube - 1/4" Tubing
10 GPD - #1 Tube - 3/8" Tubing
20 GPD - #2 Tube - 1/4" Tubing
20 GPD - #2 Tube - 3/8" Tubing
34 GPD - #2 Tube - 1/4" Tubing
34 GPD - #2 Tube - 3/8" Tubing

A100DMPHP5y14	769.93
A100DMPHP5y38	855.54
A170DMPHP9y14	769.93
A170DMPHP9y38	855.54
A100DMPHP20y14	769.93
A100DMPHP20y38	855.54
A170DMPHP34y14	769.93
A170DMPHP34y38	855.54

Note: Stenner-branded pumps are available for a 5% premium.

Aquasol Diaphragm/Metering Pumps

Model FCO26 pumps max 26 GPD against 43 psi
Model FCO70 pumps max 70 GPD against 43 psi

AFCO26	696.47
AFCO70	747.38

Aquasol Diaphragm / Metering Pumps

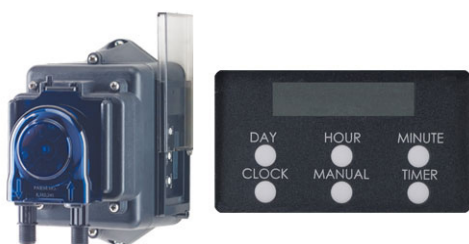


Aquasol Controllers now stocks our own unique line of solenoid-driven diaphragm pumps which are designed specifically for the pool and spa industry. These reliable pumps are self venting for off-gassing chemicals like chlorine, have solid machined PTFE diaphragms with a 5 year warranty, PVDF heads that are impervious to most chemicals, machined stainless steel solenoid drives, wall-mount enclosures sealed to meet IP65 standards, Viton o-rings, corrosion-resistant double ball check valves, and stroke frequency adjustment. UL Listed and NSF/50 certified. Available with digital pulse input control at no additional charge.

Stenner Pumps

List Price

The Econ T Series consists of programmable pumps with automatic dosing control for timed applications. This is a compact pump for light duty applications requiring a dosing schedule.



Stenner
Econ T Series

Econ T Series Programmable Pump

0-25 PSI Models:

- E10T1A: 2.5 GPD	588.12
- E10T2A: 5.0 GPD	588.12
- E10T2B: 8.5 GPD	588.12
- E10T2C: 15.0 GPD	588.12

Econ T Series Programmable Pump

26-80 PSI Models:

- E10T1F: .66 GPD	460.16
- E10T2F: 1.3 GPD	460.16
- E20T4F: 3.4 GPD	460.16
- E20T4G: 12.3 GPD	460.16
- E20T4H: 21.7 GPD	460.16



Emec Pumps

List Price

PRISMA is a stepper motor-driven diaphragm dosing pump. Microprocessor-controlled stepper motor ensures an accurate and smooth dosing.



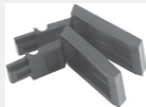
Prisma Dosing Pump

Prisma Dosing Pump

Call for Pricing



Pump Head



Latches

QuickPro Pump Head & Parts

QuickPro Pump Head Cover

- 1-Pack
- 4-Pack

High Pressure QuickPro Pump Head (tube size 1, 2, or 7)

High Pressure QuickPro Pump Head Service Kit
(tube size 1, 2, or 7)

QuickPro Pump Head (tube size 1, 2, 3, 4, or 5)

- 1-Pack
- 2-Pack

QuickPro Pump Service Kit (tube size 1, 2, 3, 4, 5, or 7)

QuickPro Tube Housing

- 1-Pack
- 2-Pack

QuickPro Latch Only, 2-Pack

Quick Roller Assembly

- 1-Pack
- 4-Pack

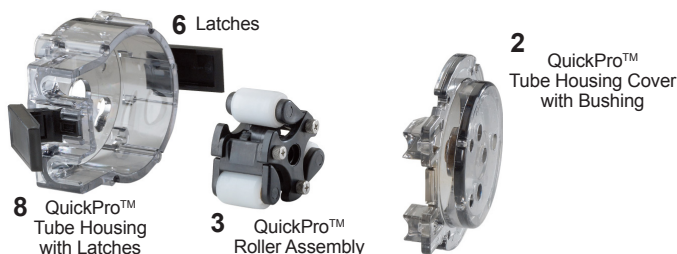
Note:

**“x” should be
replaced with
tube size.**

Part

List Price

QP100-1	48.09
QP100-4	167.64
QP10X-1	233.08
QP10X-K	75.75
QP25X-1	222.66
QP25X-2	445.33
QP25XK	70.75
QP400-1	64.36
QP400-2	118.42
QP401-2	20.81
QP500-1	70.34
QP500-4	255.66



Feed Tube Assemblies

Feed Tube Assembly w/Ends, 2-Pack

Feed Tube Assembly w/Ends, 5-Pack

High Pressure Tubes with Duckbill, 2-Pack

Econ Feed Tubes

- 2-Pack
(EC30A-2, EC30B-2, EC30C-2, EC30F-2, EC30G-2, EC30H-2)
- 5-Pack
(EC30A-5, EC30B-5, EC30C-5, EC30F-5, EC30G-5, EC30H-5)

Part

List Price

UCCP20X	52.71
MCCP20X	116.52
UCCPFXD	60.44
	48.45
	115.07

Standard Rollers



Roller Assembly



Feed Rate
Control

Feed Tube Housing Parts Old Style

Roller Assembly, 1-Pack (Prior to May 2011)

Roller Assembly, 4-Pack (Prior to May 2011)

Standard Roller (Prior to May 2011)

Roller Shaft Bushing (Prior to May 2011)

Cover Screw “B”, 10-Pack

Cover Screw “B”, 24-Pack

Pump Head Service Kit

Part

List Price

UC3ASYD	70.91
MC3ASYD	255.66
CP33000	4.88
CP31RSB	1.50
UCCPSOB	12.55
MCCPSOB	16.15
PSKL0X	126.16

Complete Feed Rate Assemblies

Single Head Feed Rate Control w/Shaft

Double Head Feed Rate Control w/Shaft

Dual Head Dual Control Feed Rate Control w/Shaft

Part

List Price

FC5040D	437.43
DM5040D	437.43
DM504DC	437.43

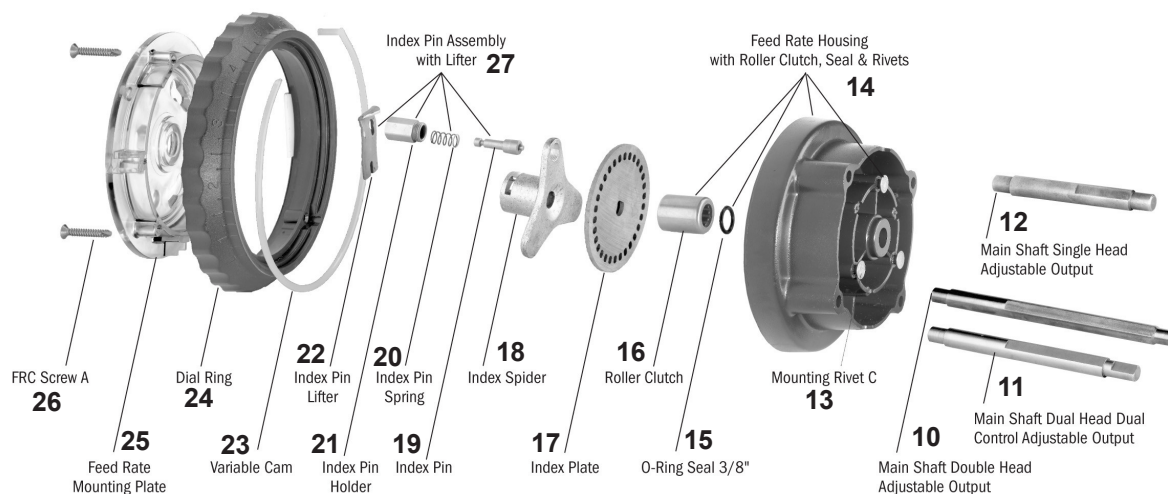


Image Reference

Feed Rate Parts

Part

List Price



Feed Rate Housing



Main Shaft



Index Spider

26	FRC Screw "A"
25	Feed Rate Mounting Plate
24	Dial Ring
23	Variable Cam, 2-Pack
	Variable Cam, 5-Pack
27	Index Pin Assembly with Lifter, 19, 20, 21 & 22, 1-Pack
	Index Pin Assembly with Lifter, 19, 20, 21 & 22, 2-Pack
22	Index Pin Lifter, 2-Pack
	Index Pin Lifter, 5-Pack
21	Index Pin Holder
20	Index Pin Spring
19	Index Pin
18	Index Spider
17	Index Plate, 1-Pack
	Index Plate, 5-Pack
16	Roller Clutch
15	O-Ring Seal 3/8"
14	Feed Rate Housing with Roller Clutch, Seal, and Rivets
13	Mounting Rivet "C"
12	Main Shaft for Single Head-Adjustable Rate, 1-Pack
	Main Shaft for Single Head-Adjustable Rate, 2-Pack
11	Main Shaft for Double Head-Adjustable Rate
10	Main Shaft for Dual Head Dual Control-Adjustable Rate
	Feed Rate Service Kit

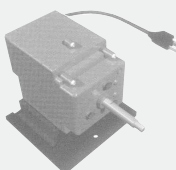
FCS000A	0.57
FC5N000	27.52
FC5M040	27.52
UCFC5H0	33.32
MCFC5H0	80.48
UCFC5AY	105.62
MCFC5AY	177.56
UCFC5L1	33.32
MCFC5L1	80.48
FC5L003	18.05
FC5L005	4.13
FC5L002	62.83
FC5K00D	48.04
UCFC5ID	37.46
MCFC5ID	141.48
FC5F000	36.56
FC5E000	4.13
FC5D00S	120.61
FCS000C	0.57
UCFC5AD	55.51
MCFC5AD	91.59
DM5A00D	56.14
DM5A0DC	56.14
FSK100	93.00

Complete Gear Motor Assemblies for Adjustable Pumps

Series 45 & 100 - Complete Gear Motor 120v 60Hz	PM6041D	459.62
Series 45 & 100 - Complete Gear Motor 220v 60Hz	PM6042D	459.62
Series 85 & 170 - Complete Gear Motor 120v 60Hz	PM6081D	459.62
Series 85 & 170 - Complete Gear Motor 220v 60Hz	PM6082D	459.62

Complete Gear Motor Assemblies for Fixed Rate Pumps

Series 45MP - Complete Gear Motor 120v 60Hz	ME6041D	456.72
Series 45MP - Complete Gear Motor 220v 60Hz	ME6042D	456.72
Series 85MP - Complete Gear Motor 120v 60Hz	ME6081D	456.72
Series 85MP - Complete Gear Motor 220v 60Hz	ME6082D	456.72
Series 170DMP - Complete Gear Motor 120v 60Hz	DM6081D	468.79



Gear Motor Assembly

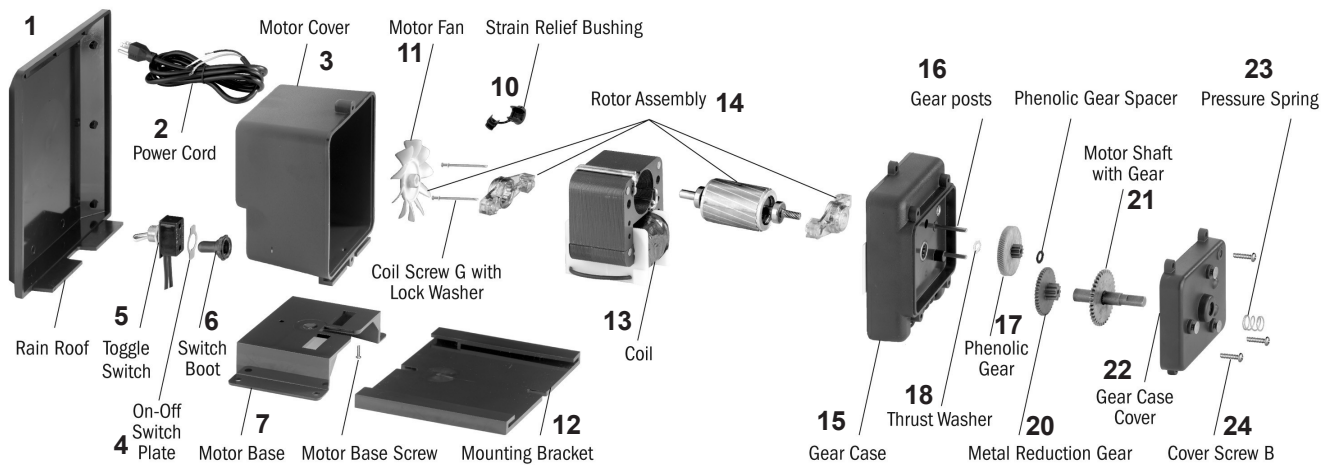


Image Reference	Gear Motor Parts	Part #	List Price
1	Rain Roof	MP90000	29.01
2	Power Cord, 120V	MP6B010	15.43
	Power Cord, 220V	MP6B020	17.70
3	Motor Housing with cord, 120V	PM6A0BL	90.23
	Motor Housing with cord, 220V	PM6A00L	90.23
4	On-Off Switch Plat	MP6D000	1.43
5	Toggle Switch	PM6E000	22.13
6	Switch Boot	MP6C000	12.92
7	Motor Base	MP70000	35.16
10	Strain Relief Bushing	MP6V000	2.20
11	Motor Fan	PM6F000	13.79
12	Mounting Bracket	MP80000	28.42
13	Coil 120v 60Hz	MP6J115	106.10
	Coil 220v 60Hz	MP6J226	106.10
14	Rotor Assembly with Bearings, Brackets & Tolerance Ring	PMBRPL2	111.30
15	Gear Case	PM6K0BL	74.79
16	Gear Post	PM6M000	7.58
17	Phenolic Gear (26RPM - Series 45 & 100)	MP6N040	41.01
	Phenolic Gear (44RPM - Series 85 & 170)	MP6N080	41.01
18	Thrust Washer	MP6P000	1.19
20	Metal Reduction Gear (26RPM - Series 45 & 100)	MP60040	47.90
	Metal Reduction Gear (44RPM - Series 85 & 170)	MP60080	47.90
21	Motor Shaft with Gear (Adjustable Rate Models)	MP6Q00D	42.57
	Motor Shaft with Gear (Single Head-Fixed Rate Models)	ME6Q0LD	52.87
	Motor Shaft with Gear (Double Head-Fixed Rate Models)	DM6Q0LD	60.04
22	Gear Case Cover	PM6R0BL	74.79
23	Pressure Spring	MP6T000	1.91
24	Cover Screw "B", 10-Pack	UCCPSOB	12.55
	Cover Screw "B", 24-Pack	MCCPSOB	16.15
	Motor Service Kit 120v	MSK120	223.21
	Motor Service Kit 220v	MSK220	223.21
	Gearcase Service Kit	GSK45A	140.83
	Gearcase Service Kit	GSK85A	140.83

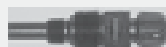
Miscellaneous Stenner Parts

Part

List Price



Connecting Nut



Injection Fitting



Ceramic Weight



Injection Check Valve



3/8" Lead Tube Adapter

Connecting Nut 1/4", 10-Pack	UCAK100	28.42
Connecting Nut 1/4", 24-Pack	MCAK100	61.07
Ferrule 1/4", 10-Pack	UCAK200	12.80
Ferrule 1/4", 24-Pack	MCAK200	19.45
Injection Fitting w/Nut & Ferrule 1/4", 1-Pack	UCAK300	15.27
Injection Fitting w/Nut & Ferrule 1/4", 5-Pack	MCAK300	44.39
Injection Fitting w/Nut-3/8", 1-Pack	UCAK400	18.24
Injection Fitting w/Nut-3/8", 5-Pack	MCAK400	83.47
Ceramic Weight w/1/4" Clip, 1-Pack	UCCW1400	27.91
Ceramic Weight w/1/4" Clip, 5-Pack	MCCW1400	165.00
Ceramic Weight w/3/8" Clip, 1-Pack	UCMAC38	27.55
Ceramic Weight w/3/8" Clip, 5-Pack	MCMAC38	88.48
Flow Indicator, 1/4"	AK600	37.48
Flow Indicator, 3/8"	AK700	37.48
Suction Line Strainer 1/4"	ST114	32.32
Suction Line Strainer 3/8"	ST138	32.32
Grease	MAGRE55	97.40
Injection Check Valve 1/4", 1-Pack	UCDBINJ	26.39
Injection Check Valve 1/4", 5-Pack	MCDBINJ	97.07
Injection Check Valve 3/8", 1-Pack	UCINJ38	32.63
Injection Check Valve 3/8", 5-Pack	MCINJ38	131.82
Check Valve Duckbill only, 2-Pack	UCCVDB0	17.36
Check Valve Duckbill only, 5-Pack	MCCVDB0	34.72
Connecting Nut 3/8" with Lead Tube Adapter, 2-Pack	UCADPTR	20.77
Connecting Nut 3/8" with Lead Tube Adapter, 5-Pack	MCADPTR	47.88
Injection Fitting Only 1/4"	CVIJ1/4	8.68
Injection Fitting Only 3/8"	CVIJ3/8	8.68
Check Valve O-Ring	CVIJOR	8.56

Chemical Tanks

Part

List Price



5 Gallon Carboy

5 Gallon Carboy w/ Cap (Polyethylene, natural)	T705	65.54
15 Gallon Drum (Polyethylene, natural)	T715	125.75
30 Gallon Drum (Polyethylene, natural)	T730	200.75
55 Gallon Drum (Polyethylene, natural)	T755	207.75
175 Gallon Tank w/lid (Polyethylene, Yellow)	T175	833.83
Insert for 175 Gallon Tank (Polyethylene, Yellow)	T175-Insert	416.48
Float Gauge for 175 Gallon Tank & Insert	T175-Gauge	232.70

Note: Tanks different from sizes listed are available by special order only.

Aquasol Bleach Storage Tank



Aquasol's Bleach Storage Tank for commercial pool facilities can store 3x the amount of bleach as a 55 gallon drum in the same space. A tank insert can be added if regulations require spill containment. The tapered design allows tanks to be stacked to save on shipping costs. High density polyethylene 1.9 S.G.

Tank Insert (140 gallon capacity)

- Fits inside tank
- Meets spill containment regulations
- Insert will not float
- Tapered for stackability
- 23" dia. x 65" h; 66 lbs.

Bleach Storage Tank (175 gallon capacity)

- Same footprint as 55 gallon drum
- Removable lock-down lid
- 8" vented fill cap
- Yellow color; UV inhibited
- Tapered for stackability
- 26" dia. x 72" h; 75 lbs.

STS Tank Series

Part

List Price

The STS Tank Series are self-contained systems designed to store and feed liquid chemicals. Unit consists of a polyethylene tank, Aquasol/Stenner feed pump, rain roof, and spill recovery system. This chemical feed system can be positioned, connected, filled and started in a matter of minutes.

Tank w/A45M or A85M Variable Pump, 1/4" Tubing & Accessories

- 7.5 Gallons	STS7.5zA45(85)Mx114	813.53
- 15 Gallons	STS15zA45(85)Mx114	1,118.77
- 30 Gallons	STS30zA45(85)Mx114	1,151.93

Tank w/A45MHP or A85MHP Variable Pump, 1/4" Tubing & Accessories

- 7.5 Gallons	STS7.5zA45(85)MHPx114	1,014.64
- 15 Gallons	STS15zA45(85)MHPx114	1,137.93
- 30 Gallons	STS30zA45(85)MHPx114	1,380.75

All options above are also available with 3/8" tubing & accessories. Call for pricing.

To substitute fixed rate pump, subtract \$150.00 per system

Tank only, Natural or Gray

- 7.5 Gallons	STS7.5z	359.96
- 15 Gallons	STS15z	419.53
- 30 Gallons	STS30z	642.90

The "z"s must be replaced with tank color: GC = gray, NC = natural.



STS Tank Series

SpinTouch: Avant-Garde Water Testing

The WaterLink SpinTouch system is a one-touch, comprehensive water chemistry testing device.

This SpinTouch is intuitive and requires minimal operator training. With a single water sample, the SpinTouch will give the exact chemical readings for your pool at the push of a button.

Certified to NSF/ANSI 50



Order Code		4328-H	4329-H	4330-H	4331-H	4334-H	4335-H
Uses per Disk		Single	Single	Single	Single	3	3
Test Parameter	Range						
Free Chlorine (DPD)	0-15 ppm	■	■	■		■	■
Total Chlorine (DPD)	0-15 ppm	■	■	■		■	
Bromine (DPD)	0-33 ppm	■	■	■		■	■
pH	6.4-8.6	■	■	■	■	■	■
Calcium Hardness	0-800 ppm	■	■	■	■		
Total Alkalinity	0-250 ppm	■	■	■	■		■
Cyanuric Acid	5-150 ppm	■	■	■			
Copper	0-3.0 ppm	■	■	■	■		
Iron	0-3.0 ppm	■	■	■	■		
Salt	0-5000 ppm	■	■	■			
Phosphate	0-2000 ppb		■				
Borate	0-60 ppm			■	■		
Biguanide	0-70 ppm				■		
Biguanide Shock	0-250 ppm				■		

SpinTouch Disk Chart

SpinTouch Water Testing Equipment

Part

List Price

WaterLink SpinTouch

- Model 3581

570-300

Call for Pricing

- Model 3582

570-310

Call for Pricing

SpinTouch Testing Disks (50-pack)

- Spin Disk #4328-H 103 Series

570-301

Call for Pricing

- Spin Disk #4334-H 501 Series

570-302

Call for Pricing

- Spin Disk #4336-H DW11 Series WT

570-303

Call for Pricing

- Spin Disk #4337-H DW21 Series WT

570-304

Call for Pricing

- Spin Disk #4335-H Series

570-306

Call for Pricing

- Spin Disk #4329-H

570-307

Call for Pricing

LaMotte Syringe for SpinLabs, 1189-3 (3-pack)

570-305

Call for Pricing

There is no preset discount for SpinTouch Water Testing Equipment.

Call for volume discount opportunities.

Misc Field Service Equipment

Part

List Price

LCD Display ORP Meter

M020

321.12

- for electrode testing

TDS Meter

M040

180.13

Calibration Tool

M025

7.48

- for adjustment of calibration screws on circuit board

Tap & Drill Bit for Installation

M026

113.40

- Tap = 1/4" NPT, Bit = 7/16", Shaft = 3/8"

email: sales@aquasol.com
website: www.aquasol.com

phone: 800-444-0675
fax: 713-683-6490

Index

Dealer Discount Information	1	Stenner and Emec Pumps	9
Aquasol System Packages	2	Pump Parts	10
Aquasol Chemical Controllers	3	Feed Tube Assemblies	10
Chemical Controller Parts	3	Feed Rate Assemblies and Parts	10-11
Electrodes	4	Gear Motor Assemblies	11
Erosion Feeders	4	Gear Motor Parts	12
Tubing	4	Miscellaneous Stenner Parts	13
Flow Cell Parts	4		
Safety Pressure Switch	4	Chemical Tanks	14
Fittings	5	STS Tanks	14
Solenoid Valves and Parts	6	SpinTouch Water Testing Equipment	15
Miscellaneous Components	6	Miscellaneous Field Service Equipment	15
Complete Pumps	7-8		

Regular Hours

Monday - Friday
8:00 AM - 5:00 PM CST

Shipments / Returns / Repairs

All orders are shipped F.O.B. UPS or FedEx per ordering instructions. We will ship to you as fast as needed, F.O.B. Houston. We encourage our customers to check their shipments as soon as they are received to make sure everything arrived. All damaged items must be noted on the delivery receipt. All shortages and damages must be called into Aquasol Controllers within 48 hours of receipt, 1-800-444-0675. Aquasol Controllers offers a 30- day return policy (60 days on controllers). **To return merchandise at any time, you must call Aquasol at 1-800-444-0675 for a Return Goods Authorization number (RGA).** At our discretion, we may still authorize the return after 30 days (60 for controllers), and a 35% re-stocking fee may be applied. Include a copy of your invoice or packing slip with your return including the RGA number. We make every attempt to repair air shipments the same day they are received. All non-warranty repairs are subject to a minimum one hour labor charge.

Limited Warranty

We reserve the right to repair or replace all defective parts. Aquasol Controllers is not responsible for any removal or installation costs. Any tampering with major components, chemical damage, faulty wiring, weather conditions, power surges, or products not used with reasonable care and maintained in accordance with the instructions packed with each product will void the warranties. We make no other warranty expressed or implied. Call for an RGA number.

Warranties on Core Items

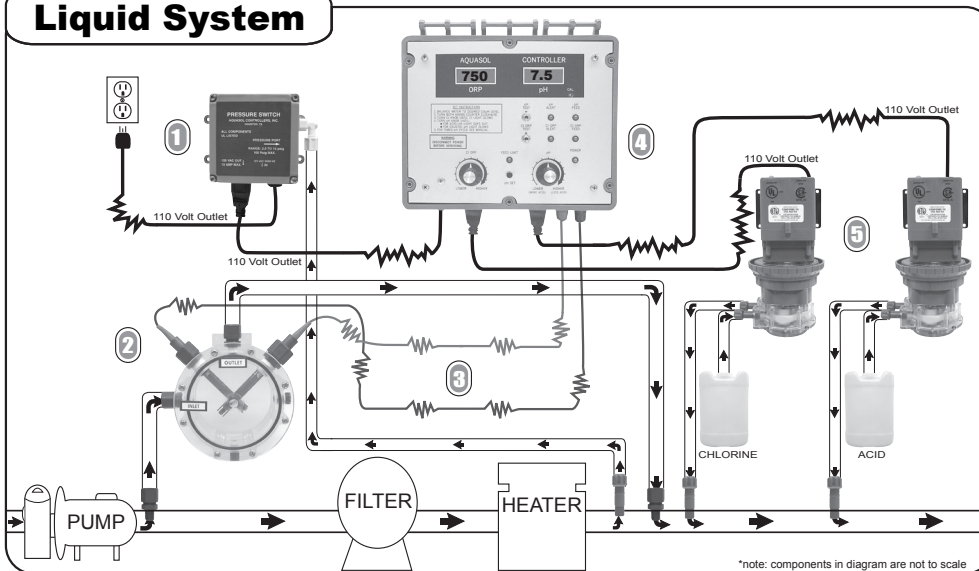
Aquasol Controllers	1 year warranty on the controller. 5 year Warranty on the main circuit module.
Electrodes	1 year warranty. (Does not include electrodes damaged from misuse/abuse)
Aquasol Diaphragm/Metering Pumps	1 year material & workmanship. 5 years Warranty on Diaphragm.
Aquasol/Stenner Metering Pump	1 year material & workmanship. (Does not include feed tubes)
Pressure Switch	90 day warranty.
Solenoid Valve	90 days.
Rainbow Feeders	1 year warranty

Credit / Pricing

Major Credit Cards Accepted • Net 30 days subject to credit approval.
Pricing may be subject to change at the time of order without prior notice.

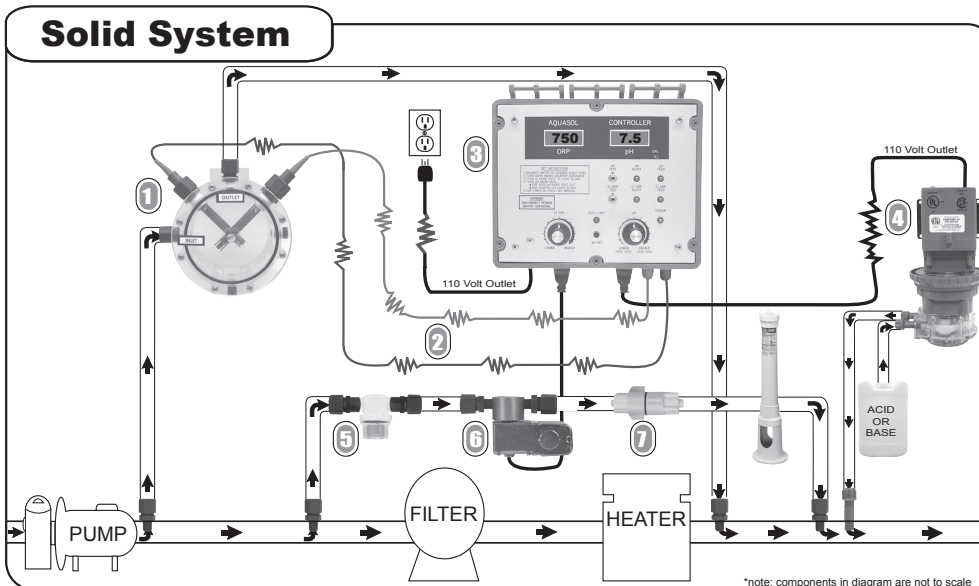
Aquasol System Packages

Liquid System



- ① The safety pressure switch verifies that the circulation system is operational before it allows the system to inject chemicals. This is required with a liquid system.
- ② The sample flow cell, which is required, provides the probes with a turbulence, velocity, and debris-free area to test the water.
- ③ As the probes test the water, the chemical readings are continuously transmitted to the controller.
- ④ The controller interprets the chemical readings from the probes and activates the chemical pumps as needed.
- ⑤ The chemical pumps inject chlorine or acid as they are activated by the controller.

Solid System

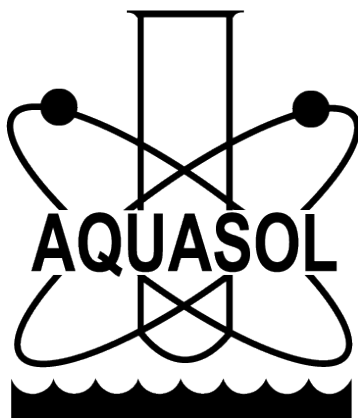


- ① The sample flow cell, which is required, provides the probes with a turbulence, velocity, and debris-free area to test the water.
- ② As the probes test the water, the chemical readings are continuously transmitted to the controller.
- ③ The controller interprets the chemical readings from the probes and activates the chemical feeders as needed.
- ④ The acid or base pump injects acid or base as it is activated by the controller.
- ⑤ The in-line filter helps to keep the solenoid valve clean.
- ⑥ The solenoid valve controls the flow of water through the chlorinator. It remains closed until activated by the controller.
- ⑦ The check valve prevents highly chlorinated water from backing up from the chlorinator and damaging the solenoid valve when it is closed.

Note: Each system can be used with any controller. The controller pictured is only an example.

Aquasol Controllers, Inc.

We Simply Control Pools. Since 1975.



CONTACT US

P: 800-444-0675
F: 713-683-6490
E: sales@aquasol.com

MONDAY - FRIDAY
8:00 AM - 5:00 PM

www.aquasol.com