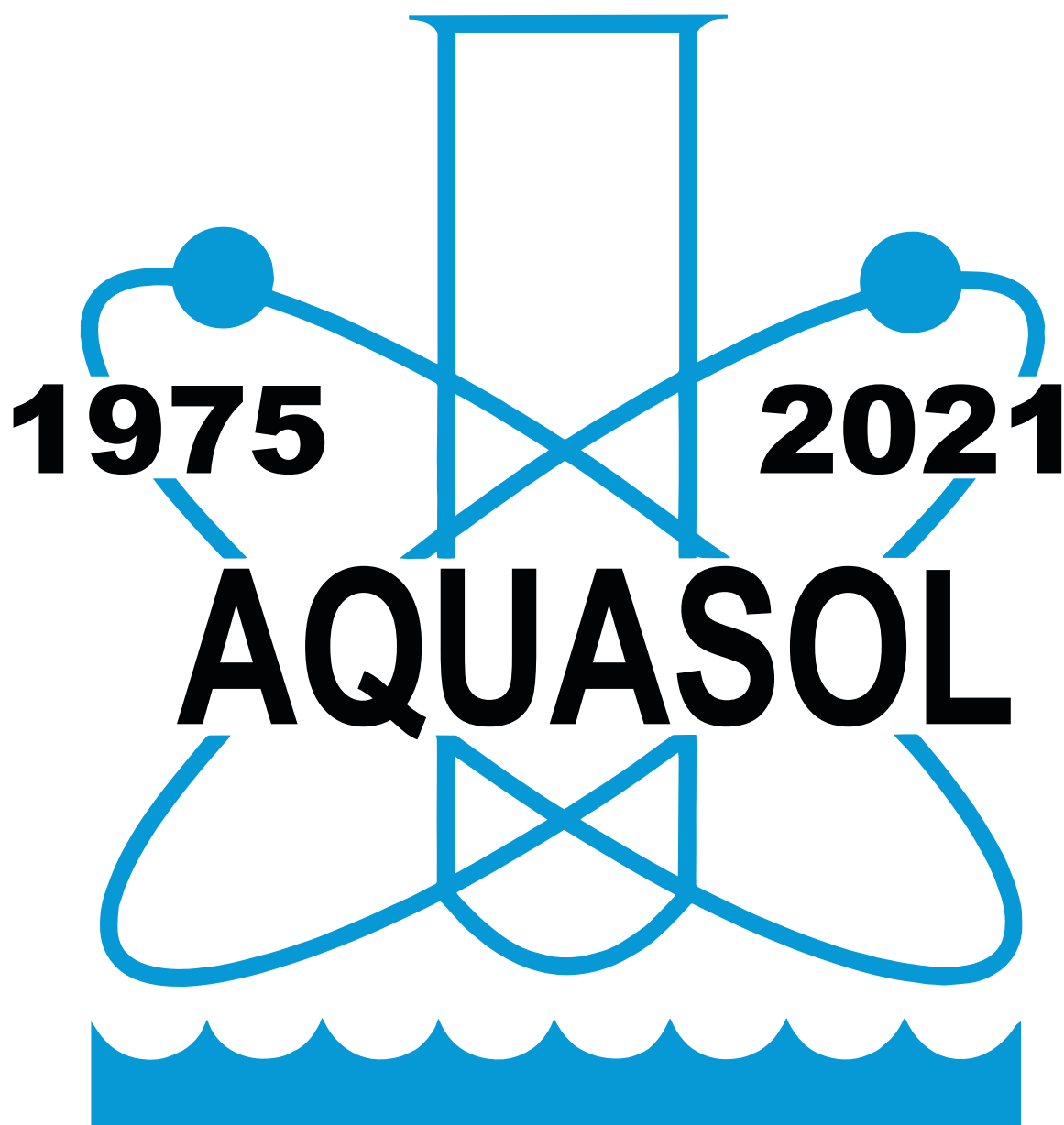


Aquasol Controllers, Inc.



46 YEARS OF RELIABILITY & SERVICE

www.aquasol.com

We Simply Control Pools. Since 1975.

1-800-444-0675

2021 Price Guide

46 YEARS OF AQUASOL CONTROLLERS!

Dear Valued Customer,

Aquasol Controllers is the industry leader in chemical automation equipment for pools and spas. We are proud to have developed a truly wireless alert system that connects your chemical controller to your mobile device, allowing for real-time alerts to be sent directly to pool operators and other stakeholders.

As we head into a new year, we aim to continue developing solutions like this to keep pushing the limits of chemical automation. Thank you for trusting us to provide the highest quality of chemical automation and pool equipment.

With gratitude,
The Aquasol Team

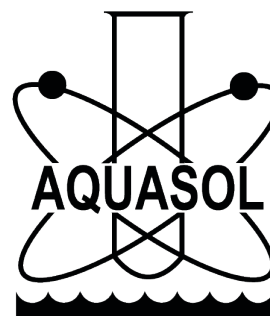


TOM BRUCE ANTHONY
AQUASOL SALES TEAM

CONTACT US

P: 800-444-0675
F: 713-683-6490
E: SALES@AQUASOL.COM

MONDAY - FRIDAY
8:00 AM - 5:00 PM



Product Discount Categories for Aquasol Dealers

Products listed within this price guide fall into one of three categories. Each category has a different maximum dealer discount from the listed price. Please contact us with any questions.

Your Aquasol Dealer Discount

| CATEGORY 1 | CATEGORY 2 | CATEGORY 3 |
|------------|------------|------------|
| | | |

| Product | Category | Pages |
|-------------------------------------|----------|-------|
| System Packages | 1 | 2 |
| Controllers | 1 | 3 |
| Controller Parts | 3 | 3 |
| Preventative Maintenance Service | N/A | 3 |
| Electrode Components | | |
| Electrodes | 2 | 4 |
| Electrode Fitting | 3 | 4 |
| Cable Extensions | 3 | 4 |
| Erosion Feeders | | |
| Stand-alone Feeder | 3 | 4 |
| Feeder Parts | 3 | 4 |
| Tubing, All | 3 | 4 |
| Flow Cell | | |
| Flow Cell Complete | 2 | 4 |
| Flow Cell Parts, All | 3 | 4 |
| Safety Pressure Switch | 2 | 4 |
| Fittings, All | 3 | 5 |
| Solenoid Valves, Complete & Parts | 3 | 6 |
| Miscellaneous: | | |
| Valves, Flow Meter, In-Line Filters | 3 | 6 |
| Mounting Panel | 3 | 6 |
| Field Service Equipment | 3 | |
| Chemical Feed Pumps | 2 | 7-9 |
| Pump Parts / Accessories | 3 | 10-12 |
| CO2 Systems, Complete | 2 | 13 |
| CO2 System Parts and Components | 3 | 13 |
| CO2 Flow Cell Complete | 2 | 13 |
| Chemical Tanks, All | 3 | 14 |
| STS Tank Series | 2 | 14 |
| SpinTouch Water Testing Equipment | N/A | 15 |

Featuring the XPC Controller - Now with WiFi / Ethernet Communications!



- ORP/pH control
- Integrated pressure switch
- Optional flow switch
- True proportional feeding with pulse input pumps
- Tank level monitoring
- TO rate calculation/display
- Flow totalizer
- IP65/NEMA 4X enclosure
- Online access for data monitoring
- Cloud data backup
- WiFi/Ethernet alerts

Aquasol System Packages



Liquid System Package

Aquasol System Packages are our all-inclusive solution to chemical automation. Each board will include a chemical controller, electrodes, flow cell, pumps, and all other relevant components. The comprehensive lists for the solid and liquid systems are below.

Each system can be used with any controller. The controller pictured is only an example.



Solid System Package

Liquid System Package

- Controller:

- XPC
- XPC with communications
- WTC
- SPC

Part

- SYSTEM-LX
- SYSTEM-LXWIFI
- SYSTEM-LW
- SYSTEM-LS

List Price

- \$3,745.00
- \$4,770.00
- \$3,055.00
- \$2,740.00

- Electrodes

---included---

- Flow cell

---included---

- Chlorine feed pump (A85MP or A45MP)

---included---

Optional: Upgrade to variable speed pump

+\$120.00

- Acid feed pump (A45MP)

---included---

Optional: Upgrade to variable speed pump

+\$120.00

- Safety pressure switch

---included---

- Mounting panel, tubings, and fittings

---included---

Solid System Package

- Controller:

- XPC
- WTC
- SPC

Part

- SYSTEM-SX
- SYSTEM-SW
- SYSTEM-SS

List Price

- \$4,770.00
- \$3,055.00
- \$2,740.00

- Electrodes

---included---

- Flow cell

---included---

- 300-29X Rainbow feeder

---included---

(with 1/2" solenoid valve, 5/8" check valve, & 5/8" screen filter)

- pH feed pump* (A45MP)

---included---

Optional: Upgrade to variable speed pump

+\$120.00

- Mounting panel, tubings, and fittings

---included---

Components of Aquasol's System Packages can be purchased individually. Please refer to the table of contents for a complete list of parts that we offer.

Aquasol Controllers Agency Listings

Aquasol offers three types of controllers for commercial pool automation. We recommend purchasing them as part of a system package, but they can be purchased separately. The SPC and WTC are Intertek/ETL listed to UL standards, and the XPC is UL listed. All Aquasol Controllers are tested and listed to ANSI/NSF Std. 50



Aquasol Chemical Controllers

Part # List Price



XPC Controller

Aquasol XPC
- controls sanitizer and pH
- includes safety pressure switch

XPC Complete 2,850.00

Aquasol XPC with communications
- controls sanitizer and pH
- includes safety pressure switch

XPC-Wifi-Complete 3,875.00



SPC Controller

Aquasol SPC*
- controls sanitizer and pH

SPC Complete 1,850.00

Aquasol WTC*
- controls sanitizer and pH
- dual digital displays

WTC Complete 2,160.00



WTC Controller

Aquasol Individual ORP
- controls sanitizer only

IND-ORP 1,150.00

Aquasol Individual pH
- controls pH only

IND-pH 1,150.00

Preventative Maintenance
- diagnostics, calibration, BNCs, and relays

PM01 (no discount) 129.95

* 110V standard; 220V available.

All controllers include a sample flow cell, electrodes, and fittings.

Chemical Controller Parts

Part # List Price

1/4 Amp Fuse (Slo-Blo)

W342 1.80

3 Amp Fuse (Slo-Blo)

W343 1.80

15 Amp Fuse (Slo-Blo)

W344 1.80

3 Amp Fuse for XPC

X043 1.80

8 Amp Fuse for XPC

X044 1.80

Face Plate- Complete SPC

S360 408.85

Face Plate - Complete WTC

W360 749.55

Display Meters for WTC Face Plate

W061 295.28

Circuit Board - Red

S040R-ELT/NSF 573.30

Relay Model C

W341 15.29

Face Panel Knob

S065 6.50

Power Cord

W392 22.99

110 VAC Receptacle

W393 28.95

BNC

S094 14.20

Teflon Tape

S103 1.39

Circuit Board (IND-pH or IND-ORP)

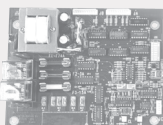
I040 286.65

Face Panel (IND-pH or IND-ORP)

I060 229.32

Owner's Manual

S104 7.99



Circuit Board

email: sales@aquasol.com
website: www.aquasol.com

phone: 800-444-0675
fax: 713-683-6490



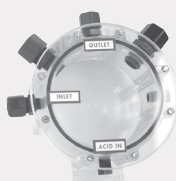
Electrode



Rainbow 300-29 Feeder



Tubing



Flow Cell Complete

Electrodes

ORP Electrode (10 ft cable with BNC)
pH Electrode (10 ft cable with BNC)
Grounding Electrode
Electrode Fitting
Cable Extensions (25 ft)

Part

S010
S020
S005
F220
S028-25

List Price

169.00
149.00
65.00
5.55
59.58

Erosion Feeders

Pentair-Rainbow 300-29X (5/8" flex tubing)
Pentair-Rainbow HC-3330 Feeder
Pentair-Rainbow HC-3340 Feeder

Part

R100
R200
R300

List Price

208.00
360.00
380.00

Tubing

Tubing 1/4" OD Black HDPE
Tubing 1/4" OD Natural HDPE
Tubing 3/8" OD Black HDPE
Tubing 3/8" OD Natural HDPE

Part

M015B
M015N
M016B
M016N

List Price

0.25 / ft
0.25 / ft
0.48 / ft
0.48 / ft

Other tubing colors available. Call for pricing.

Flow Cell Parts

Flow Cell Complete (includes fittings)
Flow Cell Fitting Package (original fittings)
Flow Cell Center (flow cell main body, no face)
Flow Cell Face Plate
Flow Cell O-Ring & Screw Kit (8 screws)
Flow Cell / Injection Point Shutoff Valve
(1/4" MNPT x 1/4" FNPT)
Flow Cell Sample Valve
(1/4" MNPT x 3/8" to 5/8" tapered hose barb)

Part

S030
S030FP
S031
S032
S036A
M021
M022

List Price

139.95
35.99
74.55
25.86
9.95
39.00
39.00

Safety Pressure Switch

Safety Pressure Switch (0-6 psi)
- for pool equipment installed above pool level
Safety Pressure Switch (2-22 psi)
- for pool equipment installed below pool level

Part

M011
M011-HP

List Price

154.75
159.75

A safety pressure switch is a REQUIRED component of a liquid chlorine system.

Safety First: The Aquasol Pressure Switch



Why do we need the safety pressure switch?

The safety pressure switch eliminates the possibility of injecting chlorine and/or acid in the return line of the pool when there is no water flow. This can happen if the circulation pump is not operational or if the filter is in backwash.

How does it work?

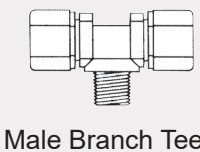
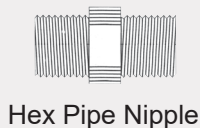
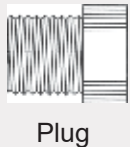
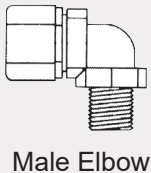
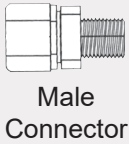
The chemical feeders are plugged into the Aquasol Controller, the controller is plugged in the safety pressure switch, and the safety pressure switch is plugged into a 120VAC power receptacle. The safety pressure switch is plumbed into the return line to the pool (see system diagrams on inside back cover). The pressure switch is internally adjusted to turn on when there is adequate pressure in the line and turn off when there is a loss of pressure. No manual reset is required.

Note: The Safety Pressure Switch is only one layer of protection, and swimmers should never be allowed in the pool when the circulation system is off or down. Please visit <http://www.poolinterlocksafety.com/> for more details.

Fittings

Part

List Price



| | | |
|---|----------|-------|
| 1/4" FNPT x 1/4" Tube Female Connector | F010 | 5.95 |
| 1/4" FNPT x 3/8" Tube Female Connector | F011 | 6.29 |
| 3/8" FNPT x 3/8" Tube Female Connector | F012 | 7.69 |
| 1/2" FNPT x 3/8" Tube Female Connector | F016 | 10.47 |
| 1/2" FNPT x 5/8" Tube Female Connector | F017 | 7.69 |
| 1/8" MNPT x 3/8" Tube Male Connector | F225 | 4.06 |
| 1/4" MNPT x 1/4" Tube Male Connector | F200 | 3.59 |
| 1/4" MNPT x 3/8" Tube Male Connector (Flow Cell Inlet/Outlet) | F230 | 5.49 |
| 1/4" MNPT x 1/2" Tube Male Connector | F227 | 5.01 |
| 1/4" MNPT x 5/8" Tube Male Connector | F446 | 7.18 |
| 3/8" MNPT x 3/8" Tube Male Connector | F210 | 4.13 |
| 3/8" MNPT x 1/2" Tube Male Connector | F240 | 6.01 |
| 1/2" MNPT x 3/8" Tube Male Connector | F215 | 6.03 |
| 1/2" MNPT x 1/2" Tube Male Connector (Electrode Fitting) | F220 | 7.00 |
| 1/2" MNPT x 1/2" Tube Male Connector (Non Electrode Fitting) | F222 | 8.24 |
| 1/2" MNPT x 5/8" Tube Male Connector | F250 | 7.81 |
| 3/4" MNPT x 5/8" Tube Male Connector | F255 | 7.73 |
| 3/4" MNPT x 3/8" Tube Male Connector | F260 | 7.69 |
| 1/4" MNPT x 1/4" Tube Male Elbow | F300 | 4.49 |
| 1/4" MNPT x 3/8" Tube Male Elbow | F330 | 7.56 |
| 3/8" MNPT x 1/4" Tube Male Elbow | F305 | 6.59 |
| 3/8" MNPT x 3/8" Tube Male Elbow | F310 | 6.28 |
| 1/2" MNPT x 3/8" Tube Male Elbow | F340 | 7.45 |
| 1/2" MNPT x 1/2" Tube Male Elbow | F320 | 7.69 |
| 1/2" MNPT x 5/8" Tube Male Elbow | F270 | 7.69 |
| 1/4" x 1/4" Tube Union | F400 | 6.48 |
| 3/8" x 1/4" Tube Union | F430 | 9.67 |
| 3/8" x 3/8" Tube Union | F410 | 6.91 |
| 3/8" x 1/2" Tube Union | F440 | 8.02 |
| 1/2" x 1/2" Tube Union | F420 | 8.11 |
| 5/8" x 3/8" Tube Union | F445 | 7.50 |
| 3/8" to 1/4" Tube Union | F512 | 3.85 |
| 1/8" MNPT Plug | F600 | 4.57 |
| 1/4" MNPT Plug (Flow cell plugs) | F610 | 1.43 |
| 3/8" MNPT Plug | F620 | 1.49 |
| 1/2" MNPT Plug | F630 | 1.64 |
| 3/4" MNPT Plug | F640 | 2.02 |
| 1/4" x 1/8" MNPT Hex Pipe Nipple | F695 | 1.42 |
| 1/4" x 1/4" MNPT Hex Pipe Nipple | F700 | 1.52 |
| 1/4" x 3/8" MNPT Hex Pipe Nipple | F730 | 3.82 |
| 3/8" x 3/8" MNPT Hex Pipe Nipple | F710 | 3.82 |
| 3/4" x 3/4" MNPT Hex Pipe Nipple | F750 | 9.79 |
| 1/4" NPT x 1/4" Tube Male Branch Tee | F800 | 7.72 |
| 1/4" NPT x 3/8" Tube Male Branch Tee | F810 | 8.49 |
| 3/8" NPT x 3/8" Tube Male Branch Tee | F820 | 10.31 |
| 1/4" Tube Tee | F500 | 9.67 |
| 3/8" Tube Tee | F510 | 9.82 |
| 3/8" x 3/8" White Tube Tee | F515 | 7.07 |
| 3/8" x 1/4" White Tube Tee | F516 | 10.87 |
| 1/4" MNPT x 1/4" Tube (White, pressure switch straight fitting) | M011-115 | 4.57 |
| 1/8" FNPT x 1/4" Tube (White, pressure switch elbow fitting) | M011-120 | 4.57 |



3/4" Solenoid Valve

Solenoid Valves & Parts

| | Part # | List Price |
|---|-------------|------------|
| 1/2" PVC Solenoid Valve, 120V, no fittings | VAPVC-12 | 145.95 |
| 1/2" PVC Solenoid Valve, 120V, with 3/8" tube fittings | VAPVC-12-38 | 150.95 |
| 1/2" PVC Solenoid Valve, 120V, with 5/8" tube fittings | VAPVC-12-58 | 150.95 |
| 3/4" PVC Solenoid Valve, 120V, no fittings | VAPVC-34 | 163.95 |
| 3/4" PVC Solenoid Valve, 120V, with 5/8" tube fittings | VAPVC-34-58 | 169.00 |
| 1/2" PVC Solenoid Valve Body (S-800), with coil/seals (no power cord) | V0PVC-12 | 117.95 |
| 3/4" PVC Solenoid Valve Body (S-800) with coil/seals (no power cord) | V0PVC-34 | 119.95 |

All solenoid valves are Viton and come with a power cord unless stated otherwise.



3/8" In-Line Check Valve



In-Line Filter



Sample Valve

Misc. Components

| | Part # | List Price |
|---|--------|------------|
| 3/8" In-Line Check Valve (for 3/8" flex tube) | M010 | 75.00 |
| 3/8" Rainbow Flow Indicator (for Pentair Lifeguard series 300 feeders) | M110 | 65.00 |
| 5/8" Rainbow Check Valve (for 5/8" flex tube) | M190 | 40.50 |
| 1/2" Check Valve (for PVC, slip connections) | M150 | 60.00 |
| 3/4" Check Valve (for PVC, slip connections) | M160 | 68.00 |
| Mounting Panel - Plastic, 22" x 22" (Pre-drilled to mount all components) | M340 | 75.00 |
| 3/8" In-Line Filter w/ 3/8" Tubing Connection | M019 | 34.95 |
| 5/8" In-Line Filter w/ 5/8" Tubing Connection | M019B | 34.95 |
| Flow Cell / Injection Point Shuto Valve (1/4" MNPT x 1/4" FNPT) | M021 | 39.00 |
| Flow Cell Sample Valve (1/4" MNPT x 3/8" to 5/8" tapered hose barb) | M022 | 39.00 |

Tube Size Selection Chart - Maximum GPD

| Pump Model | Tube Size #1/HP | Tube Size #2/HP | Tube Size #3 | Tube Size #4 | Tube Size #5 | Tube Size #7/HP |
|------------|-----------------|-----------------|--------------|--------------|--------------|-----------------|
| A45M/MP | 3 GDP | 10 GDP | 22 GDP | 35 GDP | 50 GDP | 22 GDP |
| A85M/MP | 5 GDP | 17 GDP | 40 GDP | 60 GDP | 85 GDP | 40 GDP |
| A100M/MP | 6 GDP | 20 GDP | 44 GDP | 70 GDP | 100 GDP | N/A |
| A170M/MP | 10 GDP | 34 GDP | 80 GDP | 120 GDP | 170 GDP | N/A |

This chart is to be used as reference with complete pumps section on the following two pages.

Complete Pumps

Part

List Price



Single Head
Adjustable



Dual Head
Adjustable



Dual Head
Dual Control

Single Head, Adjustable, Low Pressure

45 M Series (50 GPD max) with 1/4" Accessories

45 M Series (50 GPD max) with 3/8" Accessories

85 M Series (85 GPD max) with 1/4" Accessories

85 M Series (85 GPD max) with 3/8" Accessories

A45Mxy14

A45Mxy38

A85Mxy14

A85Mxy38

611.00

647.00

611.00

647.00

Dual Head, Adjustable, Low Pressure

100 DM Series (100 GPD max) with 1/4" Accessories

100 DM Series (100 GPD max) with 3/8" Accessories

170 DM Series (170 GPD max) with 1/4" Accessories

170 DM Series (170 GPD max) with 3/8" Accessories

100 MDC Series (100 GPD max) with 1/4" Accessories

100 MDC Series (100 GPD max) with 3/8" Accessories

170 MDC Series (170 GPD max) with 1/4" Accessories

170 MDC Series (170 GPD max) with 3/8" Accessories

A100DMxy14

A100DMxy38

A170DMxy14

A170DMxy38

A100MDCxy14

A100MDCxy38

A170MDCxy14

A170MDCxy38

848.00

919.00

848.00

919.00

848.00

919.00

848.00

919.00

Single Head, Adjustable, High Pressure

3 GPD - #1 Tube - 1/4" Tubing

3 GPD - #1 Tube - 3/8" Tubing

5 GPD - #1 Tube - 1/4" Tubing

5 GPD - #1 Tube - 3/8" Tubing

10 GPD - #2 Tube - 1/4" Tubing

10 GPD - #2 Tube - 3/8" Tubing

17 GPD - #2 Tube - 1/4" Tubing

17 GPD - #2 Tube - 3/8" Tubing

22 GPD - #7 Tube - 1/4" Tubing

22 GPD - #7 Tube - 3/8" Tubing

40 GPD - #7 Tube - 1/4" Tubing

40 GPD - #7 Tube - 3/8" Tubing

A45MHP2y14

A45MHP2y38

A85MHP5y14

A85MHP5y38

A45MHP10y14

A45MHP10y38

A85MHP17y14

A85MHP17y38

A45MHP22y14

A45MHP22y38

A85MHP40y14

A85MHP40y38

636.00

671.00

636.00

671.00

636.00

671.00

636.00

671.00

636.00

671.00

636.00

671.00

**When installing
an Aquasol pump
outdoors, a rain roof
(MP90000) should
always be used.**

Dual Head, Adjustable, High Pressure

6 GPD - #1 Tube - 1/4" Tubing

6 GPD - #1 Tube - 3/8" Tubing

10 GPD - #1 Tube - 1/4" Tubing

10 GPD - #1 Tube - 3/8" Tubing

20 GPD - #2 Tube - 1/4" Tubing

20 GPD - #2 Tube - 3/8" Tubing

34 GPD - #2 Tube - 1/4" Tubing

34 GPD - #2 Tube - 3/8" Tubing

6 GPD - #1 Tube - 1/4" Tubing

6 GPD - #1 Tube - 3/8" Tubing

10 GPD - #1 Tube - 1/4" Tubing

10 GPD - #1 Tube - 3/8" Tubing

20 GPD - #2 Tube - 1/4" Tubing

20 GPD - #2 Tube - 3/8" Tubing

34 GPD - #2 Tube - 1/4" Tubing

A100DMHP5y14

A100DMHP5y38

A170DMHP9y14

A170DMHP9y38

A100DMHP20y14

A100DMHP20y38

A170DMHP34y14

A170DMHP34y38

A100MDCHP5y14

A100MDCHP5y38

A170MDCHP9y14

A170MDCHP9y38

A100MDCHP20y14

A100MDCHP20y38

A170MDCHP34y14

895.00

966.00

895.00

966.00

895.00

966.00

895.00

966.00

988.00

1057.00

988.00

1057.00

988.00

1057.00

988.00

Note:

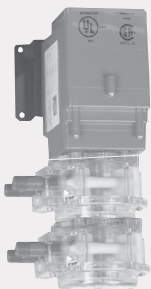
**"x" should be
replaced with tube
size: 1,2,3,4,5,7**

**"y" should be
replaced with voltage:
1=110V, 2=220V**

Note: Stenner-branded pumps are available for a 5% premium.



Single Head
Fixed Rate



Dual Head
Fixed Rate

Complete Pumps (con't)

Single Head, Fixed Rate, Low Pressure

45 MP Series with 1/4" Accessories
45 MP Series with 3/8" Accessories
85 MP Series with 1/4" Accessories
85 MP Series with 3/8" Accessories

| Part # | List Price |
|-----------|------------|
| A45MPxy14 | 439.00 |
| A45MPxy38 | 474.00 |
| A85MPxy14 | 439.00 |
| A85MPxy38 | 474.00 |

Dual Head, Fixed Rate, Low Pressure

100 DMP Series with 1/4" Accessories
100 DMP Series with 3/8" Accessories
170 DMP Series with 1/4" Accessories
170 DMP Series with 3/8" Accessories

| | |
|-------------|--------|
| A100DMPxy14 | 622.00 |
| A100DMPxy38 | 665.00 |
| A170DMPxy14 | 622.00 |
| A170DMPxy38 | 665.00 |

Single Head, Fixed Rate, High Pressure

3 GPD - #1 Tube - 1/4" Tubing
3 GPD - #1 Tube - 3/8" Tubing
5 GPD - #1 Tube - 1/4" Tubing
5 GPD - #1 Tube - 3/8" Tubing
10 GPD - #2 Tube - 1/4" Tubing
10 GPD - #2 Tube - 3/8" Tubing
17 GPD - #2 Tube - 1/4" Tubing
17 GPD - #2 Tube - 3/8" Tubing
22 GPD - #7 Tube - 1/4" Tubing
22 GPD - #7 Tube - 3/8" Tubing
40 GPD - #7 Tube - 1/4" Tubing
40 GPD - #7 Tube - 3/8" Tubing

Note:

"x" should be
replaced with tube
size: 1,2,3,4,5,7

"y" should be
replaced with voltage:
1=110V, 2=220V

| | |
|--------------|--------|
| A45MPHP2y14 | 464.00 |
| A45MPHP2y38 | 499.00 |
| A85MPHP5y14 | 464.00 |
| A85MPHP5y38 | 499.00 |
| A45MPHP10y14 | 464.00 |
| A45MPHP10y38 | 499.00 |
| A85MPHP17y14 | 464.00 |
| A85MPHP17y38 | 499.00 |
| A45MPHP22y14 | 464.00 |
| A45MPHP22y38 | 499.00 |
| A85MPHP40y14 | 464.00 |
| A85MPHP40y38 | 499.00 |

Dual Head, Fixed Rate, High Pressure

6 GPD - #1 Tube - 1/4" Tubing
6 GPD - #1 Tube - 3/8" Tubing
10 GPD - #1 Tube - 1/4" Tubing
10 GPD - #1 Tube - 3/8" Tubing
20 GPD - #2 Tube - 1/4" Tubing
20 GPD - #2 Tube - 3/8" Tubing
34 GPD - #2 Tube - 1/4" Tubing
34 GPD - #2 Tube - 3/8" Tubing

| | |
|----------------|--------|
| A100DMPHP5y14 | 642.00 |
| A100DMPHP5y38 | 713.00 |
| A170DMPHP9y14 | 642.00 |
| A170DMPHP9y38 | 713.00 |
| A100DMPHP20y14 | 642.00 |
| A100DMPHP20y38 | 713.00 |
| A170DMPHP34y14 | 642.00 |
| A170DMPHP34y38 | 713.00 |

Note: Stenner-branded pumps are available for a 5% premium.

Aquasol Diaphragm/Metering Pumps

Model FCO26 pumps max 26 GPD against 43 psi
Model FCO70 pumps max 70 GPD against 43 psi

| | |
|--------|--------|
| AFCO26 | 584.00 |
| AFCO70 | 640.00 |

Aquasol Diaphragm / Metering Pumps

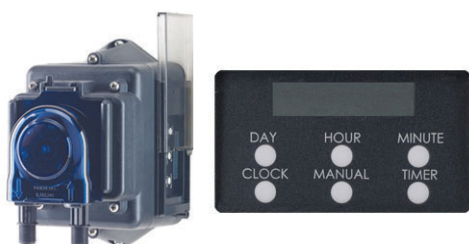


Aquasol Controllers now stocks our own unique line of solenoid-driven diaphragm pumps which are designed specifically for the pool and spa industry. These reliable pumps are self venting for off-gassing chemicals like chlorine, have solid machined PTFE diaphragms with a 5 year warranty, PVDF heads that are impervious to most chemicals, machined stainless steel solenoid drives, wall-mount enclosures sealed to meet IP65 standards, Viton o-rings, corrosion-resistant double ball check valves, and stroke frequency adjustment. UL Listed and NSF/50 certified. Available with digital pulse input control at no additional charge.

Stenner Pumps

List Price

The Econ T Series consists of programmable pumps with automatic dosing control for timed applications. This is a compact pump for light duty applications requiring a dosing schedule.



Stenner
Econ T Series

Econ T Series Programmable Pump

0-25 PSI Models:

| | |
|--------------------|--------|
| - E10T1A: 2.5 GPD | 402.00 |
| - E10T2A: 5.0 GPD | 402.00 |
| - E10T2B: 8.5 GPD | 402.00 |
| - E10T2C: 15.0 GPD | 402.00 |

Econ T Series Programmable Pump

26-80 PSI Models:

| | |
|--------------------|--------|
| - E10T1F: .66 GPD | 408.00 |
| - E10T2F: 1.3 GPD | 408.00 |
| - E20T4F: 3.4 GPD | 408.00 |
| - E20T4G: 12.3 GPD | 408.00 |
| - E20T4H: 21.7 GPD | 408.00 |

The S Series Pump is a smart peristaltic metering pump designed to interface with process control systems.



Stenner
S Series

S Series Smart Peristaltic Metering Pump

25-100 PSI Models:

| | |
|-------------------------|---------|
| - Pump with 1/4" Tubing | 1517.00 |
| - Pump with 3/8" Tubing | 1550.00 |



Emec Pumps

List Price

PRISMA is a stepper motor-driven diaphragm dosing pump. Microprocessor-controlled stepper motor ensures an accurate and smooth dosing.



Prisma Dosing Pump

Prisma Dosing Pump

Call for Pricing

Image Reference

2



Pump Head

8



Latches

6

3

QuickPro Pump Head & Parts**Part #****List Price**

QuickPro Pump Head Cover

- 1-Pack

QP100-1

34.60

- 4-Pack

QP100-4

97.50

High Pressure QuickPro Pump Head (tube size 1, 2, or 7)

QP10X-1

168.00

High Pressure QuickPro Pump Head Service Kit
(tube size 1, 2, or 7)

QP10X-K

69.70

QuickPro Pump Head (tube size 1, 2, 3, 4, or 5)

- 1-Pack

QP25X-1

155.60

- 2-Pack

QP25X-2

273.90

QuickPro Pump Service Kit (tube size 1, 2, 3, 4, 5, or 7)

QP25XK

64.40

QuickPro Tube Housing

- 1-Pack

QP400-1

45.45

- 2-Pack

QP400-2

83.60

QuickPro Latch Only, 2-Pack

QP401-2

14.90

Quick Roller Assembly

- 1-Pack

QP500-1

50.60

- 4-Pack

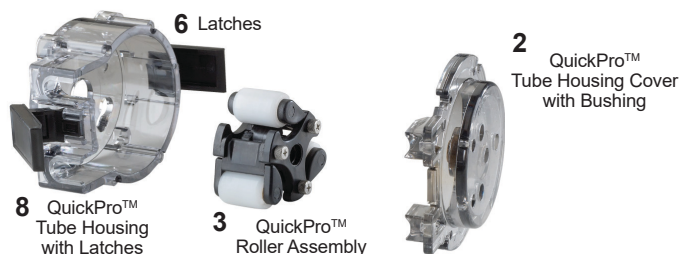
QP500-4

184.00

Quick Roller Arm Assembly, 3-Pack

QP501-3

7.70

Note:**"x" should be
replaced with
tube size.****Feed Tube Assemblies****Part #****List Price**

Feed Tube Assembly w/Ends, 2-Pack

UCCP20X

47.70

Feed Tube Assembly w/Ends, 5-Pack

MCCP20X

103.70

High Pressure Tubes with Duckbill, 2-Pack

UCCPFXD

53.75

Econ Feed Tubes

- 2-Pack

43.05

(EC30A-2, EC30B-2, EC30C-2, EC30F-2, EC30G-2, EC30H-2)

- 5-Pack

102.35

(EC30A-5, EC30B-5, EC30C-5, EC30F-5, EC30G-5, EC30H-5)

Feed Tube Housing Parts Old Style**Part #****List Price**

Roller Assembly, 1-Pack (Prior to May 2011)

UC3ASYD

49.60

Roller Assembly, 4-Pack (Prior to May 2011)

MC3ASYD

184.00

Standard Roller (Prior to May 2011)

CP33000

4.30

Roller Shaft Bushing (Prior to May 2011)

CP31RSB

1.24

Cover Screw "B", 10-Pack

UCCPSOB

9.90

Cover Screw "B", 24-Pack

MCCPSOB

12.95

Pump Head Service Kit

PSKL0X

64.40

Complete Feed Rate Assemblies**Part #****List Price**

Single Head Feed Rate Control w/Shaft

FC5040D

314.00

Double Head Feed Rate Control w/Shaft

DM5040D

314.00

Dual Head Dual Control Feed Rate Control w/Shaft

DM504DC

314.00

Standard Rollers

Roller Assembly

Feed Rate
Control

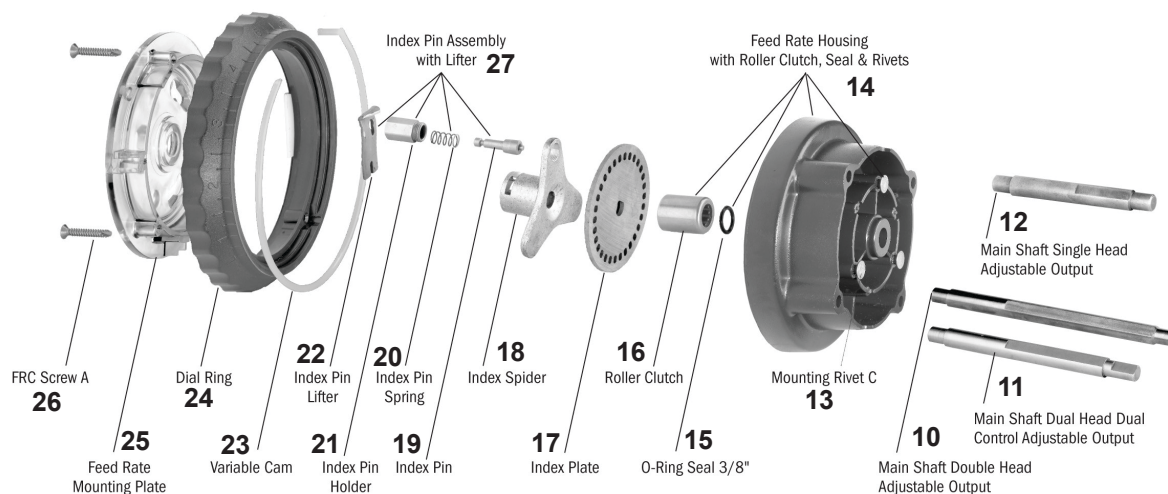


Image Reference

Feed Rate Parts

Part

List Price



Feed Rate
Housing



Main Shaft



Index Spider

| | |
|----|---|
| 26 | FRC Screw "A" |
| 25 | Feed Rate Mounting Plate |
| 24 | Dial Ring |
| 23 | Variable Cam, 2-Pack |
| | Variable Cam, 5-Pack |
| 27 | Index Pin Assembly with Lifter, 19, 20, 21 & 22, 1-Pack |
| | Index Pin Assembly with Lifter, 19, 20, 21 & 22, 2-Pack |
| 22 | Index Pin Lifter, 2-Pack |
| | Index Pin Lifter, 5-Pack |
| 21 | Index Pin Holder |
| 20 | Index Pin Spring |
| 19 | Index Pin |
| 18 | Index Spider |
| 17 | Index Plate, 1-Pack |
| | Index Plate, 5-Pack |
| 16 | Roller Clutch |
| 15 | O-Ring Seal 3/8" |
| 14 | Feed Rate Housing with Roller Clutch, Seal, and Rivets |
| 13 | Mounting Rivet "C" |
| 12 | Main Shaft for Single Head-Adjustable Rate, 1-Pack |
| | Main Shaft for Single Head-Adjustable Rate, 2-Pack |
| 11 | Main Shaft for Double Head-Adjustable Rate |
| 10 | Main Shaft for Dual Head Dual Control-Adjustable Rate |
| | Feed Rate Service Kit |

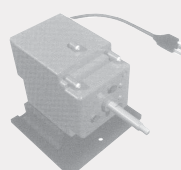
| | |
|---------|--------|
| FCS000A | 0.45 |
| FC5N000 | 19.75 |
| FC5M040 | 19.75 |
| UCFC5H0 | 29.60 |
| MCFC5H0 | 71.65 |
| UCFC5AY | 89.00 |
| MCFC5AY | 158.00 |
| UCFC5L1 | 35.25 |
| MCFC5L1 | 71.15 |
| FC5L003 | 13.00 |
| FC5L005 | 3.05 |
| FC5L002 | 45.20 |
| FC5K00D | 44.45 |
| UCFC5ID | 33.30 |
| MCFC5ID | 125.90 |
| FC5F000 | 30.70 |
| FC5E000 | 3.30 |
| FC5D00S | 8.60 |
| FCS000C | 0.24 |
| UCFC5AD | 49.40 |
| MCFC5AD | 81.50 |
| DM5A00D | 40.35 |
| DM5A0DC | 40.35 |
| FSK100 | 66.90 |

Complete Gear Motor Assemblies for Adjustable Pumps

| | | |
|---|---------|--------|
| Series 45 & 100 - Complete Gear Motor 120v 60Hz | PM6041D | 327.00 |
| Series 45 & 100 - Complete Gear Motor 220v 60Hz | PM6042D | 327.00 |
| Series 85 & 170 - Complete Gear Motor 120v 60Hz | PM6081D | 327.00 |
| Series 85 & 170 - Complete Gear Motor 220v 60Hz | PM6082D | 327.00 |

Complete Gear Motor Assemblies for Fixed Rate Pumps

| | | |
|---|---------|--------|
| Series 45MP - Complete Gear Motor 120v 60Hz | ME6041D | 325.00 |
| Series 45MP - Complete Gear Motor 220v 60Hz | ME6042D | 325.00 |
| Series 85MP - Complete Gear Motor 120v 60Hz | ME6081D | 325.00 |
| Series 85MP - Complete Gear Motor 220v 60Hz | ME6082D | 325.00 |
| Series 100DMP - Complete Gear Motor 120v 60Hz | DM6041D | 327.00 |
| Series 100DMP - Complete Gear Motor 220v 60Hz | DM6042D | 327.00 |
| Series 170DMP - Complete Gear Motor 120v 60Hz | DM6081D | 327.00 |
| Series 170DMP - Complete Gear Motor 220v 60Hz | DM6082D | 327.00 |



Gear Motor
Assembly

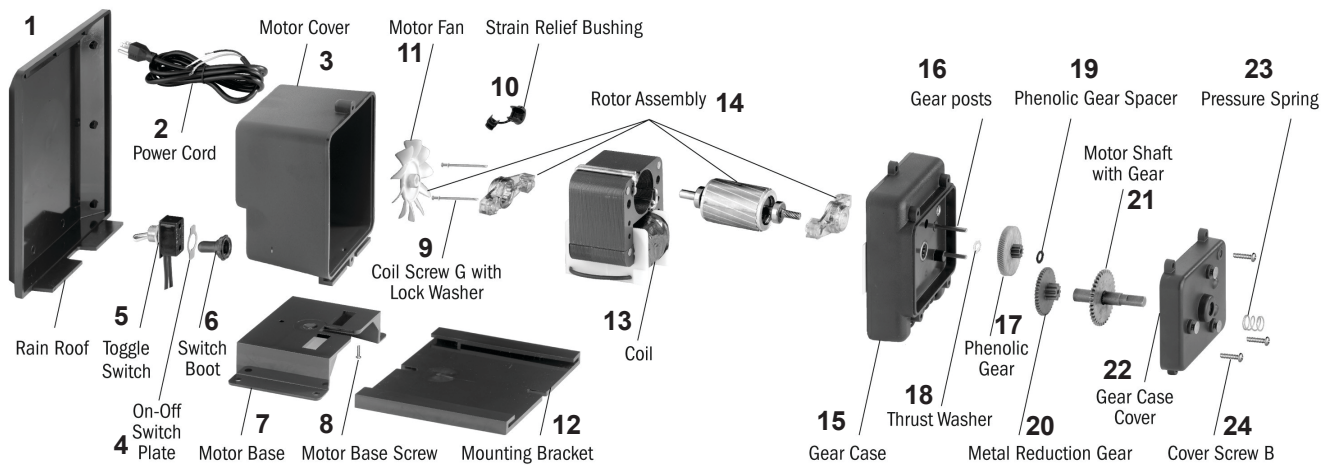


Image Reference

Gear Motor Parts

Part

List Price

| | | | |
|----|---|---------|--------|
| 1 | Rain Roof | MP90000 | 20.80 |
| 2 | Power Cord, 120V | MP6B010 | 12.60 |
| | Power Cord, 220V | MP6B020 | 12.60 |
| 3 | Motor Housing with cord, 120V | PM6A0BL | 64.90 |
| | Motor Housing with cord, 220V | PM6A00L | 64.90 |
| 4 | On-Off Switch Plate | MP6D000 | 0.91 |
| 5 | Toggle Switch | PM6E000 | 15.90 |
| 6 | Switch Boot | MP6C000 | 8.35 |
| 7 | Motor Base | MP70000 | 25.25 |
| 8 | Motor Base Screw "D" | PMS000D | 0.55 |
| 9 | Coil Screw "G" | PMS00G1 | 0.80 |
| 10 | Strain Relief Bushing | MP6V000 | 1.85 |
| 11 | Motor Fan | PM6F000 | 9.90 |
| 12 | Mounting Bracket | MP80000 | 24.80 |
| 13 | Coil 120v 60Hz | MP6J115 | 94.45 |
| | Coil 220v 60Hz | MP6J226 | 94.45 |
| 14 | Rotor Assembly with Bearings, Brackets & Tolerance Ring | PMBRPL2 | 99.10 |
| 15 | Gear Case | PM6K0BL | 53.75 |
| 16 | Gear Post | PM6M000 | 5.45 |
| 17 | Phenolic Gear (26RPM - Series 45 & 100) | MP6N040 | 29.50 |
| | Phenolic Gear (44RPM - Series 85 & 170) | MP6N080 | 29.50 |
| 18 | Thrust Washer | MP6P000 | 1.00 |
| 19 | Phenolic Gear Spacer | PM6M001 | 0.61 |
| 20 | Metal Reduction Gear (26RPM - Series 45 & 100) | MP60040 | 34.45 |
| | Metal Reduction Gear (44RPM - Series 85 & 170) | MP60080 | 34.45 |
| 21 | Motor Shaft with Gear (Adjustable Rate Models) | MP6Q00D | 30.55 |
| | Motor Shaft with Gear (Single Head-Fixed Rate Models) | ME6Q0LD | 38.00 |
| | Motor Shaft with Gear (Double Head-Fixed Rate Models) | DM6Q0LD | 42.85 |
| 22 | Gear Case Cover | PM6R0BL | 53.75 |
| 23 | Pressure Spring | MP6T000 | 1.32 |
| 24 | Cover Screw "B", 10-Pack | UCCPSOB | 9.90 |
| | Cover Screw "B", 24-Pack | MCCPSOB | 12.95 |
| | Motor Service Kit 120v | MSK120 | 160.60 |
| | Motor Service Kit 220v | MSK220 | 160.60 |
| | Gearcase Service Kit | GSK45A | 130.75 |
| | Gearcase Service Kit | GSK85A | 130.75 |

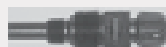
Miscellaneous Stenner Parts

Part

List Price



Connecting Nut



Injection Fitting



Ceramic Weight



Injection Check Valve



3/8" Lead Tube Adapter

| | | |
|--|----------|--------|
| Connecting Nut 1/4", 10-Pack | UCAK100 | 25.25 |
| Connecting Nut 1/4", 24-Pack | MCAK100 | 54.35 |
| Ferrule 1/4", 10-Pack | UCAK200 | 11.80 |
| Ferrule 1/4", 24-Pack | MCAK200 | 17.25 |
| Injection Fitting w/Nut & Ferrule 1/4", 1-Pack | UCAK300 | 13.55 |
| Injection Fitting w/Nut & Ferrule 1/4", 5-Pack | MCAK300 | 39.45 |
| Injection Fitting w/Nut-3/8", 1-Pack | UCAK400 | 13.55 |
| Injection Fitting w/Nut-3/8", 5-Pack | MCAK400 | 39.45 |
| Ceramic Weight w/1/4" Clip, 1-Pack | UCCW1400 | 19.60 |
| Ceramic Weight w/1/4" Clip, 5-Pack | MCCW1400 | 72.55 |
| Ceramic Weight w/3/8" Clip, 1-Pack | UCMAC38 | 19.75 |
| Ceramic Weight w/3/8" Clip, 5-Pack | MCMAC38 | 73.10 |
| Flow Indicator, 1/4" | AK600 | 26.95 |
| Flow Indicator, 3/8" | AK700 | 26.95 |
| Suction Line Strainer 1/4" | ST114 | 28.70 |
| Suction Line Strainer 3/8" | ST138 | 28.70 |
| Grease | MAGRE55 | 36.00 |
| Injection Check Valve 1/4", 1-Pack | UCDBINJ | 23.45 |
| Injection Check Valve 1/4", 5-Pack | MCDBINJ | 96.45 |
| Injection Check Valve 3/8", 1-Pack | UCINJ38 | 29.00 |
| Injection Check Valve 3/8", 5-Pack | MCINJ38 | 118.40 |
| Check Valve Duckbill only, 2-Pack | UCCVDB0 | 16.75 |
| Check Valve Duckbill only, 5-Pack | MCCVDB0 | 25.50 |
| Connecting Nut 3/8" with Lead Tube Adapter, 2-Pack | UCADPTR | 18.40 |
| Connecting Nut 3/8" with Lead Tube Adapter, 5-Pack | MCADPTR | 42.60 |
| Injection Fitting Only 1/4" | CVIJ1/4 | 5.15 |
| Injection Fitting Only 3/8" | CVIJ3/8 | 5.15 |
| Check Valve O-Ring | CVIJOR | 5.30 |

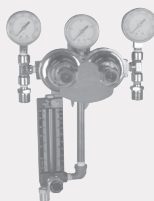
CO₂ Systems & Components

Part

List Price



CO₂ Flow Cell



CO₂ Dual Cylinder System

| | | |
|--|------|----------|
| Single Cylinder CO ₂ System | C310 | 1,589.89 |
| Dual Cylinder CO ₂ System | C360 | 1,854.24 |
| - Manual switchover when cylinder empty | | |
| Dual Cylinder CO ₂ System | C390 | 3,348.00 |
| - Automatic switchover when cylinder empty | | |

All CO₂ Systems listed above include: regulator, solenoid valve, check valve, 20' Tubing, inpHinite Flow Cell Injection Diffuser, & Required Fittings.

| | | |
|---|---------|--------|
| Parker 1/4" SS Solenoid Complete w/power cord | CA19 | 199.00 |
| Flow Meter for Dual CO ₂ (Rexarc) | C382 | 696.00 |
| Flow Cell Complete CO ₂ System | S030-SP | 194.50 |
| CO ₂ Diuser | C302 | 50.80 |
| SS Braided Hose, 1/4" x 3' | C386 | 359.26 |
| - for dual cylinder systems | | |
| Repair Kit for Dual Cylinder System | C380R | 246.07 |



Chemical Tanks

| | Part # | List Price |
|---|-------------|------------|
| 5 Gallon Carboy w/ Cap (Polyethylene, natural) | T705 | 29.30 |
| 15 Gallon Drum (Polyethylene, natural) | T715 | 73.05 |
| 30 Gallon Drum (Polyethylene, natural) | T730 | 116.30 |
| 55 Gallon Drum (Polyethylene, natural) | T755 | 129.05 |
| 175 Gallon Tank w/lid (Polyethylene, Yellow) | T175 | 408.00 |
| Insert for 175 Gallon Tank (Polyethylene, Yellow) | T175-Insert | 335.00 |
| Float Gauge for 175 Gallon Tank & Insert | T175-Gauge | 140.00 |

Note: Tanks different from sizes listed are available by special order only.

Aquasol Bleach Storage Tank



Aquasol's Bleach Storage Tank for commercial pool facilities can store 3x the amount of bleach as a 55 gallon drum in the same space. A tank insert can be added if regulations require spill containment. The tapered design allows tanks to be stacked to save on shipping costs. High density polyethylene 1.9 S.G.

Tank Insert (140 gallon capacity)

- Fits inside tank
- Meets spill containment regulations
- Insert will not float
- Tapered for stackability
- 23" dia. x 65" h; 66 lbs.

Bleach Storage Tank (175 gallon capacity)

- Same footprint as 55 gallon drum
- Removable lock-down lid
- 8" vented fill cap
- Yellow color; UV inhibited
- Tapered for stackability
- 26" dia. x 72" h; 75 lbs.

STS Tank Series

Part

List Price

The STS Tank Series are self-contained systems designed to store and feed liquid chemicals. Unit consists of a polyethylene tank, Aquasol/Stenner feed pump, rain roof, and spill recovery system. This chemical feed system can be positioned, connected, filled and started in a matter of minutes.

Tank w/A45M or A85M Variable Pump, 1/4" Tubing & Accessories

| | | |
|---------------|---------------------|--------|
| - 7.5 Gallons | STS7.5zA45(85)Mx114 | 798.00 |
| - 15 Gallons | STS15zA45(85)Mx114 | 843.00 |
| - 30 Gallons | STS30zA45(85)Mx114 | 890.00 |

Tank w/A45MHP or A85MHP Variable Pump, 1/4" Tubing & Accessories

| | | |
|---------------|-----------------------|--------|
| - 7.5 Gallons | STS7.5zA45(85)MHPx114 | 809.00 |
| - 15 Gallons | STS15zA45(85)MHPx114 | 855.00 |
| - 30 Gallons | STS30zA45(85)MHPx114 | 919.00 |

*All options above are also available with 3/8" tubing & accessories. Call for pricing.
To substitute fixed rate pump, subtract \$100.00 per system*

Tank only, Natural or Gray

| | | |
|---------------|---------|--------|
| - 7.5 Gallons | STS7.5z | 217.00 |
| - 15 Gallons | STS15z | 253.00 |
| - 30 Gallons | STS30z | 388.00 |

The "z"s must be replaced with tank color: GC = gray, NC = natural.



STS Tank Series

SpinTouch: Avant-Garde Water Testing

The WaterLink SpinTouch system is a one-touch, comprehensive water chemistry testing device.

This SpinTouch is intuitive and requires minimal operator training. With a single water sample, the SpinTouch will give the exact chemical readings for your pool at the push of a button.

Certified to NSF/ANSI 50.



| Order Code | | 4328-H | 4329-H | 4330-H | 4331-H | 4334-H | 4335-H |
|----------------------|------------|--------|--------|--------|--------|--------|--------|
| Uses per Disk | | Single | Single | Single | Single | 3 | 3 |
| Test Parameter | Range | | | | | | |
| Free Chlorine (DPD) | 0-15 ppm | ■ | ■ | ■ | | ■ | ■ |
| Total Chlorine (DPD) | 0-15 ppm | ■ | ■ | ■ | | ■ | |
| Bromine (DPD) | 0-33 ppm | ■ | ■ | ■ | | ■ | ■ |
| pH | 6.4-8.6 | ■ | ■ | ■ | ■ | ■ | ■ |
| Calcium Hardness | 0-800 ppm | ■ | ■ | ■ | ■ | | |
| Total Alkalinity | 0-250 ppm | ■ | ■ | ■ | ■ | | ■ |
| Cyanuric Acid | 5-150 ppm | ■ | ■ | ■ | | | |
| Copper | 0-3.0 ppm | ■ | ■ | ■ | ■ | | |
| Iron | 0-3.0 ppm | ■ | ■ | ■ | ■ | | |
| Salt | 0-5000 ppm | ■ | ■ | ■ | | | |
| Phosphate | 0-2000 ppb | | ■ | | | | |
| Borate | 0-60 ppm | | | ■ | ■ | | |
| Biguanide | 0-70 ppm | | | | ■ | | |
| Biguanide Shock | 0-250 ppm | | | | ■ | | |

SpinTouch Disk Chart

SpinTouch Water Testing Equipment

Part

List Price



10-Test Spin Disk Series



3-Test Spin Disk Series

WaterLink SpinTouch

- Model 3581

- Model 3582

570-300

849.00

570-310

849.00

SpinTouch Testing Disks (50-pack)

- Spin Disk #4328-H 103 Series

570-301

134.00

- Spin Disk #4334-H 501 Series

570-302

134.00

- Spin Disk #4336-H DW11 Series WT

570-303

134.00

- Spin Disk #4337-H DW21 Series WT

570-304

134.00

- Spin Disk #4335-H Series

570-306

134.00

- Spin Disk #4329-H

570-307

134.00

LaMotte Syringe for SpinLabs, 1189-3 (3-pack)

570-305

15.00

There is no preset discount for SpinTouch Water Testing Equipment.

Call for volume discount opportunities.

Misc Field Service Equipment

Part

List Price

LCD Display ORP Meter

M020

270.00

- for electrode testing

TDS Meter

M040

155.95

Calibration Tool

M025

5.25

- for adjustment of calibration screws on circuit board

Tap & Drill Bit for Installation

M026

59.99

- Tap = 1/4" NPT, Bit = 7/16", Shaft = 3/8"

email: sales@aquasol.com
website: www.aquasol.com

phone: 800-444-0675
fax: 713-683-6490

Index

| | | | |
|------------------------------|-----|---------------------------------------|-------|
| Dealer Discount Information | 1 | Stenner and Emec Pumps | 9 |
| Aquasol System Packages | 2 | Pump Parts | 10 |
| Aquasol Chemical Controllers | 3 | Feed Tube Assemblies | 10 |
| Chemical Controller Parts | 3 | Feed Rate Assemblies and Parts | 10-11 |
| Electrodes | 4 | Gear Motor Assemblies | 11 |
| Erosion Feeders | 4 | Gear Motor Parts | 12 |
| Tubing | 4 | Miscellaneous Stenner Parts | 13 |
| Flow Cell Parts | 4 | CO2 Systems and Components | 13 |
| Safety Pressure Switch | 4 | Chemical Tanks | 14 |
| Fittings | 5 | STS Tanks | 14 |
| Solenoid Valves and Parts | 6 | SpinTouch Water Testing Equipment | 15 |
| Miscellaneous Components | 6 | Miscellaneous Field Service Equipment | 15 |
| Complete Pumps | 7-8 | | |

Regular Hours

Monday - Friday
8:00 AM - 5:00 PM CST

Shipments / Returns / Repairs

All orders are shipped F.O.B. UPS or FedEx per ordering instructions. We will ship to you as fast as needed, F.O.B. Houston. We encourage our customers to check their shipments as soon as they are received to make sure everything arrived. All damaged items must be noted on the delivery receipt. All shortages and damages must be called into Aquasol Controllers within 48 hours of receipt, 1-800-444-0675. Aquasol Controllers offers a 30- day return policy (60 days on controllers). **To return merchandise at any time, you must call Aquasol at 1-800-444-0675 for a Return Goods Authorization number (RGA).** At our discretion, we may still authorize the return after 30 days (60 for controllers), and a 35% re-stocking fee may be applied. Include a copy of your invoice or packing slip with your return including the RGA number. We make every attempt to repair air shipments the same day they are received. All non-warranty repairs are subject to a minimum one hour labor charge.

Limited Warranty

We reserve the right to repair or replace all defective parts. Aquasol Controllers is not responsible for any removal or installation costs. Any tampering with major components, chemical damage, faulty wiring, weather conditions, power surges, or products not used with reasonable care and maintained in accordance with the instructions packed with each product will void the warranties. We make no other warranty expressed or implied. Call for an RGA number.

Warranties on Core Items

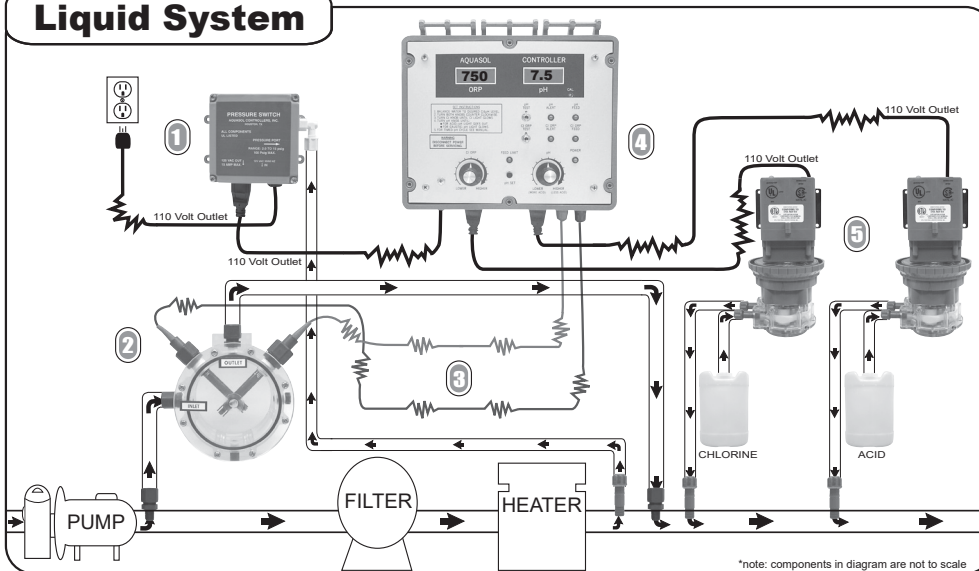
| | |
|----------------------------------|--|
| Aquasol Controllers | 1 year warranty on the controller. 5 year Warranty on the main circuit module. |
| Electrodes | 1 year warranty. (Does not include electrodes damaged from misuse/abuse) |
| Aquasol Diaphragm/Metering Pumps | 1 year material & workmanship. 5 years Warranty on Diaphragm. |
| Aquasol/Stenner Metering Pump | 1 year material & workmanship. (Does not include feed tubes) |
| Pressure Switch | 90 day warranty. |
| Solenoid Valve | 90 days. |
| CO2 System | 90 day warranty for electrical. 1 year for all other parts and components. |
| Rainbow Feeders | 1 year warranty |

Credit / Pricing

Major Credit Cards Accepted • Net 30 days subject to credit approval.
Pricing may be subject to change at the time of order without prior notice.

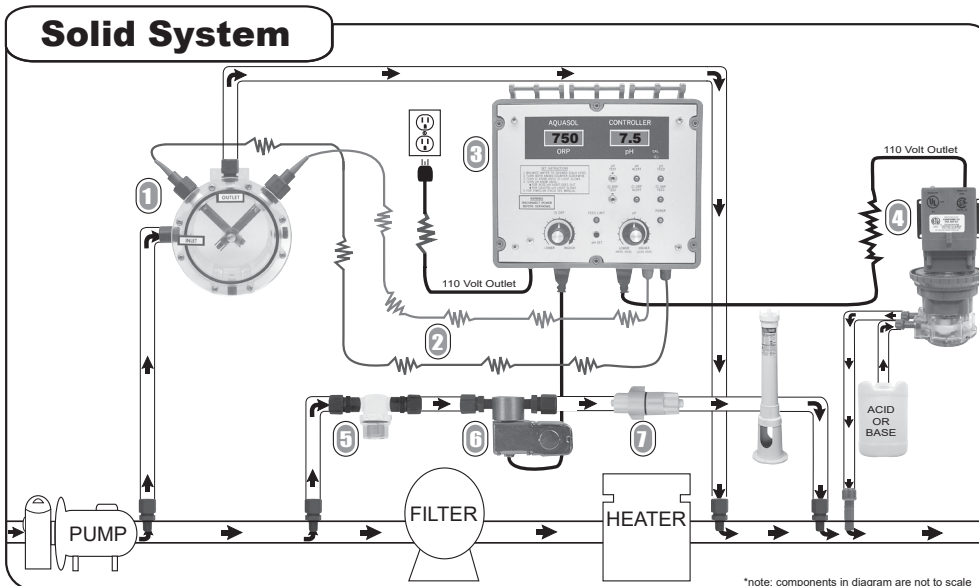
Aquasol System Packages

Liquid System



- ① The safety pressure switch verifies that the circulation system is operational before it allows the system to inject chemicals. This is required with a liquid system.
- ② The sample flow cell, which is required, provides the probes with a turbulence, velocity, and debris-free area to test the water.
- ③ As the probes test the water, the chemical readings are continuously transmitted to the controller.
- ④ The controller interprets the chemical readings from the probes and activates the chemical pumps as needed.
- ⑤ The chemical pumps inject chlorine or acid as they are activated by the controller.

Solid System

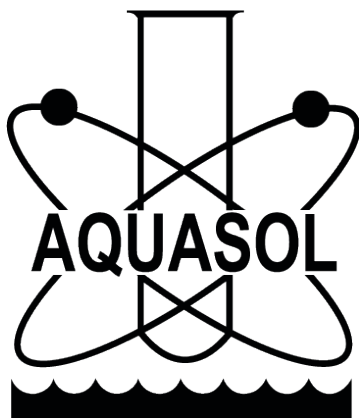


- ① The sample flow cell, which is required, provides the probes with a turbulence, velocity, and debris-free area to test the water.
- ② As the probes test the water, the chemical readings are continuously transmitted to the controller.
- ③ The controller interprets the chemical readings from the probes and activates the chemical feeders as needed.
- ④ The acid or base pump injects acid or base as it is activated by the controller.
- ⑤ The in-line filter helps to keep the solenoid valve clean.
- ⑥ The solenoid valve controls the flow of water through the chlorinator. It remains closed until activated by the controller.
- ⑦ The check valve prevents highly chlorinated water from backing up from the chlorinator and damaging the solenoid valve when it is closed.

Note: Each system can be used with any controller. The controller pictured is only an example.

Aquasol Controllers, Inc.

We Simply Control Pools. Since 1975.



CONTACT US

P: 800-444-0675
F: 713-683-6490
E: sales@aquasol.com

MONDAY - FRIDAY
8:00 AM - 5:00 PM

www.aquasol.com