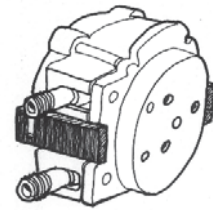
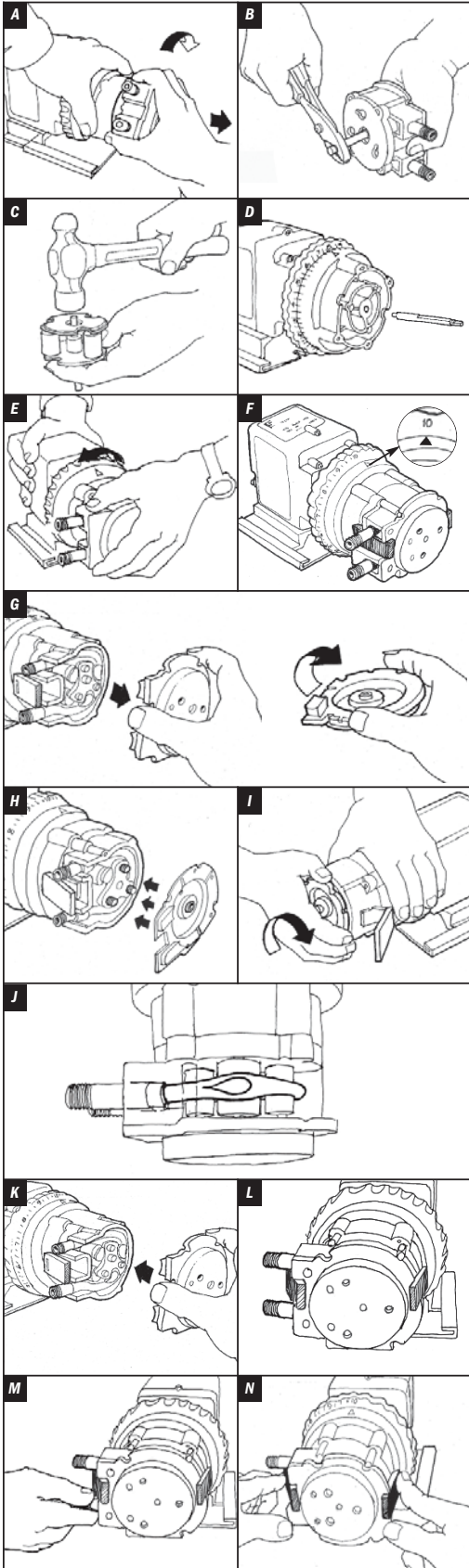


QuickPro® PUMP HEAD REPLACEMENT for Single Head Adjustable & Fixed Output Pumps



NOTICE: Before installing or servicing the pump, read the pump manual for all safety information and complete instructions. The pump is designed for installation and service by properly trained personnel.



REMOVE AND INSTALL THE QuickPro® PUMP HEAD

- 1** Turn off the pump and unplug the power cord.
 - Adjustable Model**
 - a. To remove the pump head, hold the feed rate securely, grasp the head and turn it clockwise until it stops. **Figure A**
 - b. Remove the head by pulling it straight out from the pump. The main shaft will come out with the pump head.
 - c. Using a pair of pliers, grasp the main shaft and rock it back and forth (clockwise and counter-clockwise) while pulling it straight out of the pump head. Set aside the shaft to be reinstalled later. Discard the old tube, housing and cover. If the shaft will not come out, remove the cover from the pump head and use a hammer to tap the shaft from the front of the roller assembly to dislodge it. **Figure B & C**
 - d. Insert the shaft back into the feed rate control. **Figure D**
 - e. Put the new pump head onto the feed rate control and turn it counterclockwise until the shaft falls into place. Proceed to step 2.
 - Fixed Output Model**
 - a. To remove the pump head, hold the pump securely, grasp the head and turn it clockwise until it stops. **Figure A**
 - b. Remove the tube housing and roller assembly together by pulling it straight out from the pump. The shaft will remain in the pump. Discard the tube, housing and cover. If the housing and roller assembly are difficult to remove, insert a large, flat blade screwdriver between the pump body and the head. Gently pry the head forward, ensuring the rivets on the pump body remain disengaged from the tube housing.
 - c. Put the new pump head onto the motor and turn it counterclockwise until the shaft falls into place. **Figure E** Proceed to step 2.
- 2** Push the pump head in while turning it counterclockwise. Line up the rivet holes on the pump head with the rivets on the feed rate control (adjustable pump) OR motor (fixed output pump). **Figure E**
- 3** Continue to push until the rivets are inside the holes.
- 4** Turn the pump head counterclockwise to secure the rivets in the rivet slots, firmly attaching the pump head.

EXPAND THE ROLLER ASSEMBLY

- 1** On the adjustable model, ensure the feed rate control is set to 10. With the cover latched, plug the pump in and turn the power on. Allow the pump to run the roller assembly in its collapsed position for approximately one minute to relax the tube. **Figure F**
- 2** Turn the pump off and unplug the power cord.
- 3** Remove the tube housing cover and flip to use as a tool in the next step. **Figure G**
- 4** Align the center of the inverted cover with the center of the roller assembly so that the three holes on the face of the cover align with the three knurled lugs on the roller assembly. Position the cover feet near the bottom. **Figure H**
NOTE: The roller assembly needs to be expanded so the tube is pressed against the tube housing wall.
- 5** Expand the roller assembly.

Adjustable Model

Hold the feed rate control securely, use the cover as a wrench and quickly (snap) rotate the roller assembly clockwise to expand the roller assembly. The tube will be pressed against the tube housing wall. **Figure I** Proceed to step 6.
NOTE: Clockwise is viewed from facing the head of the pump.

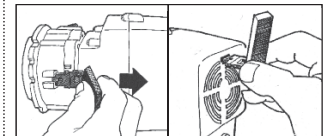
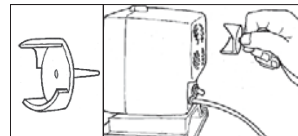
Fixed Output Model (manufactured before 04/29/11)

WARNING Only the Stenner fan brake tool should be used for this step.

- a. Insert the fan brake tool into the vent in the rear of the motor housing. Refer to the figures below.
NOTE: The fixed output pump doesn't have a clutch so the fan brake keeps the shaft from rotating when expanding the roller assembly.
- b. Holding the pump securely, use the cover as a wrench and quickly (snap) rotate the roller assembly clockwise to expand the roller assembly. The tube will be pressed against the tube housing wall. **Figure I & J**
NOTE: Clockwise is viewed from facing the head of the pump.
- c. Remove the fan brake tool. Proceed to step 6.

Fixed Output Model (motor vent with key slot, manufactured after 04/29/11)

- a. Slide one latch out to remove it from the tube housing. Insert the latch end into the key slot in the vent in the rear of the motor housing. While pressing the latch into the rear of the motor, gently rotate the cover clockwise until it stops. Refer to the figures below.
- b. Holding the pump securely, use the cover as a wrench and quickly (snap) rotate the roller assembly clockwise to expand the roller assembly. The tube will be pressed against the tube housing wall. **Figure I & J**
NOTE: Clockwise is viewed from facing the head of the pump.
- c. Remove the latch from the vent and re-attach it to the tube housing. Proceed to step 6.



- 6** Place the tube housing cover on the tube housing, affix the front of the latches to the cover lip and then press the latches back to secure. **Figure K**

CENTER THE TUBE

- 1** Ensure the pump is off. Lift the latch located between the tube fittings, leaving the end of the latch engaged with the lip on the tube housing cover. Leave the latch on the opposite side engaged. **Figure L**
- 2** Plug the pump in and turn it on. Turn the tube fitting on the suction side not more than 1/8 of a turn in the direction the tube must move. **Figure M**
- 3** DO NOT let go of the fitting until the tube rides approximately in center of the rollers.
- 4** Turn pump off, let go of the fitting, and secure the latch between the fittings. **Figure N**
- 5** Turn the pump on and run for one minute to verify operation.



Stenner Pump Company
3174 DeSalvo Road
Jacksonville, Florida 32246 USA

Phone 904.641.1666
US Toll Free 800.683.2378
Fax 904.642.1012

www.stenner.com
sales@stenner.com
© Stenner Pump Company All Rights Reserved